

NEWCOMERSTOWN PUBLIC LIBRARY



3 4240 00112 5485

Serving with Pride — Since '35

# KASERMAN FUNERAL HOME

— Ambulance Service —

246 East High      PHONE 4-2803      New Philadelphia

MEMBER THE F.D.I.C.

## UNITED BANK

*"Complete Banking Service"*

127 EAST THIRD ST.      PHONE 777      UHRICHSVILLE, OHIO

HEADQUARTERS FOR THE BEST

RCA VICTOR            RCA WHIRLPOOL

- Television
- Radios
- Phonographs
- Records
- Laundry Equipment
- Gas - Electric Ranges
- Air Conditioners
- Refrigerators • Freezers

### EILER Record & Appliances

227 W. 3rd St.      Ph. 6-2841      DOVER, OHIO

## HANHART AGENCY

SINCE 1870

### Insurance

DIAL 4-2387

111 West 3rd Street      DOVER, OHIO

FRIENDLY COUNSEL EFFICIENT SERVICE  
PHONE 5773 STRASBURG  
**Allton Insurance Center**  
SAFETY & PROTECTION FOR THE FUTURE

REPROGRAPHIES, INC.  
327 Newcomerstown Public Library  
Main Street  
Newcomerstown Ohio

BULK RATE  
U. S. POSTAGE PAID  
TOLEDO, OHIO  
PERMIT 3439

or Occupant

TUSCARAWAS COUNTY

## FARM HANDBOOK AND BUYERS GUIDE

Insurance      **McDonald Agency**      Builders      N. Phila. 42588  
Real Estate      of Fine Homes

MEMBER THE F.D.I.C.

## CITIZENS NATIONAL BANK

BANK-BY-MAIL SERVICE      PH. 4-2181 NEW PHILADELPHIA      ALL TYPES OF LOANS

*"Complete Banking Service - Since 1872"*

FRIENDLY - EFFICIENT  
PUBLIC SQUARE      NEW PHILADELPHIA, O.

FOR ALL FORMS OF INSURANCE, CALL THE

## VINTON AGENCY INSURANCE

*"Oldest in the County"*

Phone 4-2495

WALTER G. WEINSZ, Agt. — Res. Ph. 4-2480  
REEVES BANK BLDG.      DOVER, OHIO

## ANDREAS FURNITURE COMPANY

SUGARCREEK, OHIO

*Famous Names in Home Furnishings*

— QUALITY FOR LESS —

OPEN EVENINGS . . . (Closed Thursday noon)

REF TUS 1956

43 YEARS FOR  
**Your FORD Dealer Fred P. Potschner**  
N. PHILA. 42955 DOVER, OHIO

**NASH**



**DEFINITLY A BETTER CAR  
AND MORE ECONOMICAL**

**WE CAN PROVE IT  
BY A DEMONSTRATION**

- AMBASSADOR
- RAMBLER
- METROPOLITAN

**New Phila - Dover Sales & Service, Inc.**

**WILLYS**  
THE ONLY ALL-PURPOSE  
COMMERCIAL VEHICLE

**BONDED - SELECT  
USED CARS**

PHONE  
**4-2406**

160 - 164 SOUTH BROADWAY

NEW PHILADELPHIA, O.

**DEWEY L. STANEART & SON  
ALLIS-CHALMERS**

**NEW IDEA**

**JACOBSON  
POWER MOWERS**

N. Water St. Ext.

**GOOD TRADES**

PHONE  
**1086**

**NEW HOLLAND**

**BOLENS  
GARDEN TRACTORS**

Uhrichsville, Ohio

**INSURANCE  
SCHREINER AGENCY**

TWO OFFICES TO SERVE YOU

**NEW PHILADELPHIA**

Tel. 4-2064

Roy Kennedy, Mgr.

**GNADENHUTTEN**

Tel. 4-4118

Gilbert Bartles, Solicitor

NEWCOMERSTOWN PUBLIC LIBRARY

NEWCOMERSTOWN, OHIO

**HOME  
PLANNING &  
REMODELING  
SERVICE**

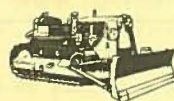
PHONE  
**4-2027**

**GLASS LUMBER & BUILDERS SUPPLY**

**MILLWORK**  
BUILDERS HARDWARE  
ROOFING - FLOORING  
DOORS - WINDOWS  
PAINTS - SPOUTING

PHONE  
**5-0161**

1244 FOURTH ST.(Rear) NEW PHILADELPHIA



**WENDLING  
BROTHERS  
COMPANY**

**GENERAL CONTRACTORS  
DOVER, OHIO**

*" Over 50 years of Service to Tuscarawas County Builders "*

Public, Industrial, and Commercial Building  
Highway and Bridge Construction

CRANE LIFTS

**EXCAVATING and GRADING**

Phone **42581**

**933 N. WOOSTER AVE.**

**DOVER, OHIO**

OHIO  
**TUSCARAWAS COUNTY**  
**FARM HANDBOOK**  
**and**  
**BUYERS GUIDE**

**PRESENTED FREE OF CHARGE TO THE FARMERS OF  
THIS COUNTY AS A COURTESY OF THE FARM AND  
BUSINESS DIRECTORY SUBSCRIBERS.**

This manual has been prepared for distribution to farm families as a courtesy of progressive business firms who cooperated to make a county directory possible here.

They felt the expense of this project justified, if only to show that they too, are a part of your Rural Community. Like the neighbor, who pitches in when you're up against it with the planting or harvest, these advertisers are ready to help you in their own way, by having the things you need on hand when you need them.

Much information is provided under this cover which should prove of value to the farm family. Your suggestions as to improvement of the content will be appreciated.

Directory Subscribers, found in the advertisers index, in almost every instance will be glad to help you or give needed information about anyone living in the rural area. Ask them and tell them that you use this handbook.

In cases of emergency in which you or yours may be involved, you may be certain that information, in numerous cases, will be provided proper authorities through the use of the County Directory they have available.

For your convenience a listing section is carried giving the items and services offered by your local stores.

Phone numbers and addresses of the stores are also given to help you in your shopping.

Please tell these advertisers whenever you find this farm handbook helpful and they will feel that their efforts have been appreciated.

Copyright 1956

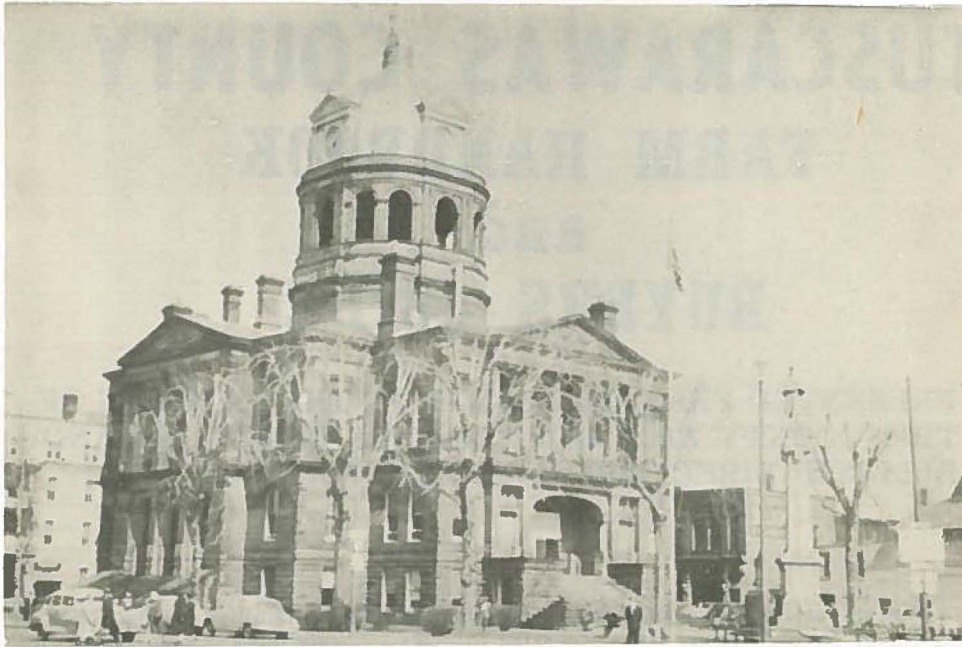
**PUBLISHED BY**

**RURAL DIRECTORIES, INC.**

PH. CHerry 2-4732

327 SIXTEENTH STREET

TOLEDO 2, OHIO



## TUSCARAWAS COUNTY HISTORY

By Randolph C. Downes

Professor of History, The University of Toledo, and Director of the  
Historical Society of Northwestern Ohio

Although south of the prehistoric glacial line, Tuscarawas receives the soil mixing and partial leveling of the ice invasion from the out-wash of the melting edge of the glacier, which just reached what is now the northern boundary of the County. The glacial deposits also dammed up the Tuscarawas River causing that stream to become part of the Muskingum drainage system. Some of this glacial drift at the mouth of Buckhorn Creek, near Newcomerstown, has revealed man-made stone implements proving that Indians lived in Ohio while the glacier was still here. This dispels the ideas that glaciers were so ancient and so frigid as to make the land uninhabitable, and that Ohio's original Indian population first arrived within the last 1500 years.

It is now thought probable that the placid and rather highly civilized Mound Builders merged into a more primitive and powerful Erie-Iroquois civilization. At any rate, in the so-called contact period, it is known that the area was part of the hunting ground of the Eries who suffered extermination in 1654 because they refused to divert their fur trade from the French-St. Lawrence system to the Iroquois-Mohawk trade route. It was not until the French and Indian War (1754-1763) that the Tuscarawas and Muskingum Valley became what was hoped to be the permanent home of the Delaware Indians. This tribe had been crowded out of its eastern Pennsylvania homeland by population pressure and by expectations of French friendship in the Ohio Valley. Even though the English defeated the French and obtained Canada in 1763, the Delawares found themselves in a satisfactory situation on the Tuscarawas by becoming part of the English-Pennsylvania fur trade centering at Fort Pitt (Pittsburgh).

The Delawares were soon strongly influenced by the Christian ministrations of the Moravian missionaries led by David Zeisberger and John Heckewelder. Using as nuclei some Christianized Delawares from eastern Pennsylvania, they set up the mission towns of Schoenbrunn (two miles south of modern New Philadelphia), Gnadenhutten, in what is now Clay township, and Salem (near modern Port Washington). When the Revolutionary War broke out the tribe showed its desire for peace by negotiating a treaty of friendship with the United States, and by helping to build the American Fort Laurens (near modern Bolivar) as part of the campaign for the capture of Detroit from the British. But the British-Indian forces were too powerful, and the Americans too feeble, so that Ft. Laurens had to be abandoned in 1779. By 1781 the Delawares had been won away from American friendship, most of the tribe joining the Anglo-Indian confederacy, and the Christianized Indians, accompanied by Zeisberger, were transferred to Canada for protection. In the spring of 1782 about 100 of them returned to Gnadenhutten to harvest their abandoned corn when they were descended upon by Pennsylvania militia, under Colonel David Williamson, and burned alive for harboring belligerent Indians who had been raiding the American frontiers. Subsequently, American contrition, in the form of land grants, resulted in the return, in 1798, of Zeisberger and a few Christian Indians, who founded Goshen, near the ruins of old Schoenbrunn. After Zeisberger's death in 1808 the Indians degenerated from contact with the whites and in 1823 the Moravians gave up their lands.

Settlement began about 1800, the county was created in 1808, and by 1810 the population numbered over 3,000. The first great spurt of growth came between 1830 and 1850 as the result of the opening of the Ohio Canal from Cleveland to Portsmouth, which made market towns out of Dover, New Philadelphia, Uhrichsville, Denison, Port Washington and others. This enabled surplus wool, wheat, pork, timber products to be exchanged at good prices for imports from the east. The numerous water-power sites of the Tuscarawas River system made possible the building of many local flour, wool, and lumber mills, as well as tanneries.

The coming of the railroads, in the 1860's and 1870's, and the accessibility of local and imported coal, gave origin and impetus to the ceramic and metal products industries which eventually culminated in a considerable industrializing and urbanizing of the county. This has provided large local markets for farm produce and has also produced wares useful to the rural population as well as to a larger market throughout the nation. Tuscarawas industry is well known for its fire and face brick, its tile, its sewer and metal pipe, its buckets, stove and enamel ware, and its machine and tool works to mention only a few.

Naturally, the rural part of the County has adjusted itself to these modern 20th century conditions. No longer are wheat, wool, pork, and timber products the main reliance. Instead, the rural area has become a great producer of dairy products, livestock, poultry, wheat, and truck vegetables. Milk finds its way to the local city markets as well as to Canton and Pittsburgh. The many local cheese factories of the Swiss Cheese Association continue to maintain the Swiss Cheese tradition introduced by German pioneers. Poultry and pork find local markets, and a large number of eggs go to the Wooster Egg Auction. Practically all farms are provided with electricity by means of the services of the Ohio Power Company and the Tuscarawas-Coshocton, the Muskingum-Guernsey, and Carroll County Cooperatives of the Rural Electrification Administration.

Tuscarawas is famous for one of the longer-lasting communistic experiments, the Zoar Community in Lawrence Township. Founded in 1817 by a German sect, called the Separatists, believing in the holiness of work rather than of doctrine, prayers and sacraments, this handful of zealots pooled its property, its work, its profits and its life in general. They isolated themselves from neighboring villages, built mills, factories and iron furnaces, and prospered for several generations. The coming of the railroads broke down their isolation, and led to discontent among the young people, so that, in the 1880's, they voted their own dissolution and divided their property.

Tuscarawas County is the birthplace of the famous Donahey family: Ohio's governor and Senator "honest Vic", and the artists James H. and William Donahey.

**COUNTY OFFICES**

COUNTY SEAT

NEW PHILADELPHIA, OHIO

OFFICE	NAME	PH. NO.
Common Pleas Judge	Cletus Fisher	42965
Probate Judge	Ralph Finley	42572
Juvenile Court Judge	Ralph Finley	42572
County Commissioners	Ben Pfeiffer	
	Elmer Miller	63573
	Roy Kennedy	
Auditor	Donald R. Kinsey	63571
Treasurer	Victor E. Martinelli	42473
Engineer	George Arnold	62672
Prosecuting Attorney	Danny Johnson	42864
Sheriff	K. D. Hiller	42616
Coroner	Phillip Doughten	66161
Clerk of Courts	George LaPorte	62674
Recorder	Robert Moore	42433
Agriculture Agent	Lester Cronin	50262
Health Department	Charles Newell	42773
Supt. of Schools	W. E. Laws	42872
Soldiers & Sailors Relief	H. Wayne App	55344
Board of Elections	Mrs. Jennie Cole, Asst. Clerk	42663

**COUNTY FACTS & FIGURES**INCOME FROM AGRICULTURE

Dairy (est)	4,213,845
Poultry (est)	1,404,615
Other Livestock (est)	1,872,820
Misc.	1,872,820
Total	\$9,364,200

POPULATION CHARACTERISTICS

Population (1950)	70,320
Urban Population (1952)	38,360
Farm Population (1952)	10,915
Rural Population (1952)	21,045

PHYSICAL CHARACTERISTICS

Land Area (Sq. Miles)	551
Acres	352,640
Acres in Farms	258,094

COMMERCIAL CHARACTERISTICS

Retail Stores (All Types)	882
Per Family Sales in 1954	\$3,211
Total Sales (1954)	72,569,000

AGRICULTURAL CHARACTERISTICS

Farms in County	2,350
Total Farm Acreage	258,094
Av. Size of Farms	109.8
Value of Land & Bldgs.	27,950,900
No. of Farm Autos	2,395
No. of Farm Trucks	1,050
No. of Farm Tractors	2,500

MANUFACTURING CHARACTERISTICS

No. of Establishments (1953)	137
Wage Earners (Mfg Only)	9,060
Value added by Mfg (1952)	41,296,000

RANKING PRODUCTS IN 1953

		% of INCOME
1st	Dairy	45%
2nd.	Poultry	15%
3rd.	Hogs	14%
4th.	Cattle	6%
5th.	Wheat	5%
6th.	Green House	3%
All Other		10%

**Your****FARM and BUSINESS DIRECTORY****Is a Treasure-House of Information.****Its Pages Contain the Most Complete****and Up-to-the-Minute Data.****USE IT OFTEN!**

## AMOUNT OF SEED REQUIRED PER ACRE OF VARIOUS FARM CROPS

Crop	Lbs. To		Rows	Best Adapted Soils
	Bu.	Broadcasted		
Alfalfa	60	8 -15 lbs.		Sandy loams, clays, well drained, ample lime
Barley	48	4 - 6 pecks		Well drained loams, silt loams
Beans—				
Field, large	60	1½- 2 bu.		Loams, silt loams, clay loams
Field, small	60	½- 1 bu.		Loams, silt loams, clay loams
Pea	60	12 -20 lbs. (Hills)	32-40 lbs.	Loams, silt loams, clay loams
Red Kidney	60	15 -25 lbs. (Hills)	40-60 lbs.	Loams, silt loams, clay loams
Beets—				
Common			12-18 lbs.	Loams, silt loams, clay loams
Sugar			12-18 lbs.	Loams, silt loams, clay loams
Bluegrass	14	6 -25 lbs.		Loams and clays
Buckwheat	50	2 - 4 pecks		Loams and clays
Cabbage		5000-7000 (Plants)		
Clover—				
Alsike	60	4 - 6 lbs.		Loams, silt loams, clays
Mammoth	60	6 -10 lbs.		Loams, sandy loams
Red	60	10 -15 lbs.		Loams, silt loams
Sweet	60	10 -15 lbs.		Loams, sandy loams
White	60	6 -16 lbs.		Loams, silt loams, clay loams
Corn—				
Broom		3 - 7 lbs.		
For Grain	56	6 -12 lbs.		
For Silage	56	15 -35 lbs.		
Cotton	33	1 Bushel		
Flaxseed	56	25 -30 lbs.		
Grass, Orchard	14	10 -15 lbs.		
Millet	50	2 - 4 pecks		Loams, clay loams, muck
Oats	32	8 -10 pecks		Loams, silt loams, clay loams
Peanuts		1 Bushel		
Peas, Field	60	2 Bushels		Loams, clay loams, clays
Popcorn	56		4- 6 lbs.	Loams, silt loams
Potatoes	60		12-18 bu.	Sandy loams, loams
Potatoes—				
Sweet	50	6000-7000 (Plants)		
Rape	50	2 - 4 lbs.		Loams, clays
Redtop	14	6 -10 lbs.		Loams, clays, muck
Rice		1½- 2½ bu.		
Rye	56	4 - 5 pecks		Loams, sandy loams, clay loams
Rye Grass	20	25 -35 lbs.		Loams, sandy loams, clay loams
Sorghum	50	40 -60 lbs.	8-10 lbs.	Loams, silt loams, clay loams
Soybeans	60	90 -120 lbs.	25-30 lbs.	Loams, sandy loams
Sudan Grass	32	35 -60 lbs.	8-10 lbs.	Loams, clays, sandy loams
Timothy	To 44	4 -12 lbs.		Loams, silt loams, clays
Tobacco		4500-5000 (Plants)		
Vetch	60	20 -25 lbs.		Sandy loams, loams
Wheat, Red	60	5 - 6 pecks		Loams, silt loams
Wheat, White	60	5 - 6 pecks		

## WHERE MODERN FARMERS FIND MODERN INFORMATION

DEAN H. MAYBERRY, Bulletin Editor  
Agricultural Extension Service  
Ohio State University - Columbus, Ohio

Americans are the world's most modern farmers and Ohioans are among the most modern in the United States. An Ohio farmer today reads his newspaper, tunes in his radio and views television to learn about latest agricultural developments such as hormones and use of atomic products in agricultural research.

Farmers in any of Ohio's 88 counties are as close to special help with their own questions as their telephone. An Ohio State University College of Agriculture staff member, the COUNTY AGRICULTURAL AGENT, may be reached by calling the number listed under AGRICULTURAL EXTENSION SERVICE in the telephone book. He is located in the COUNTY EXTENSION OFFICE which is in the court house or post office building in most county seats.

Ohio's best farmers, however, cannot remember all the new and old facts they learn from these sources. Although they may not know the answer to a specific question, they know where to find it. Men in the agricultural profession maintain libraries just as do men in medicine, law and engineering.

This is an attempt to list for modern farmers' libraries some of the bulletins of the AGRICULTURAL EXTENSION SERVICE at Ohio State University, Columbus; of the OHIO AGRICULTURAL EXPERIMENT STATION at Wooster, and of the UNITED STATES DEPARTMENT OF AGRICULTURE in Washington, D. C.

### How To Use This Bulletin List

Farmers and homemakers may use this list of bulletins in at least two ways.

First, it outlines information that is available on a farm or home subject. Always look at the bottom of the list under a given heading if the list does not seem to include the name of a bulletin you want. The notes at the bottom of the lists often refer to other lists on the subject.

Information you want on hay, for example, may be listed under "Alfalfa," "Forage Crops," "Grasses," or "Clover."

Second: You may want to file the bulletins you now have under headings here. Then, when you look up some information, you simply can refer to this list to see under what heading to look for the bulletin that includes the information.

These bulletins will help Ohio farmers maintain their EFFICIENCY. —

"Efficiency means getting the most from each unit--from each acre, each cow, sow, ewe or hen," says Mervin G. Smith, chairman of the department of agricultural economics at the university and experiment station. He asks, "If a farmer can get as much from an acre and a half as he has been getting from 2 acres, isn't it better for him to farm the acre and a half?"

It will take less work and will cost less. The extra half acre can go into a soil-building program when there is plenty of food and feed and farm prices are low. When demand for farm products increases, the whole 2 acres will produce more at a greater profit if it is operated efficiently.

The following list of publications is alphabetically arranged. With each bulletin name is the number and an abbreviation standing for the organization from which it may be obtained.

Always order a publication by its complete name and number and from the

correct organization. These organizations are revising their publications constantly to keep them up to date. Because of this and because of demand, the bulletin you want may be out of print when you first request it. Ask your county agent for the monthly list of Extension bulletins.

Because of space limitations, this list can not include all publications the three organizations offer. Publications by U.S.D.A. alone require a 129-page booklet for listing. The list that follows includes those we think you will need most often. See your county agent if you need information not listed here.

Here are the organizations, the abbreviations and instructions for obtaining a publication:

**AGRICULTURAL EXTENSION SERVICE**, Ohio State University, Columbus--  
**AG EXT.** Ask your county agricultural agent for the publication you desire. **DO NOT** write to the university. Your request will be relayed to your county agent anyway, so ask him first.

**OHIO AGRICULTURAL EXPERIMENT STATION**, Wooster--**OAES.** Ask your county agent for the publication you want. If he does not have it, write to: Mailing Room, Ohio Agricultural Experiment Station, Wooster, Ohio. List name and number of publication. Do not forget to print or type your name, county and address. Ohio residents may obtain one copy of each of five bulletins or circulars at one time.

**UNITED STATES DEPARTMENT OF AGRICULTURE**, Washington, D. C.--**USDA.** Ask your county agent for the publication you want. If he does not have it, write to: U. S. Department of Agriculture, Office of Information, Washington 25, D. C. List name and number of publication. If more than one, list in numerical order. Print name and address. If you order more than 10 at once, you will have to purchase them. Ask your county agent how to do this.

This list of publications was made possible only by the specialists and scientists of the Agricultural Extension Service, Ohio Agricultural Experiment Station and United States Department of Agriculture who wrote the bulletins. The publications are distributed by authority of W. B. Wood, director of extension in Ohio; L. L. Rummell, dean of the College of Agriculture, Ohio State University, and director of the experiment station; and C. M. Ferguson, federal extension director.

## ALFALFA

- 347 Crop varieties AG EXT  
261 Choosing and sowing meadow and pasture seedings AG EXT  
F-1539 High-grade alfalfa hay: producing, baling, loading for market USDA  
F-1722 Growing alfalfa USDA  
L-229 The potato leafhopper: A pest of alfalfa USDA  
L-304 Control of the garden webworm in alfalfa USDA  
L-325 Control of the alfalfa caterpillar USDA  
L-368 The alfalfa weevil: How to control it USDA  
(Publications relating to alfalfa also are listed under Forage Crops, Legumes)

## APPLES

- 335 How to grow tree fruits AG EXT  
313 Pruning fruit trees AG EXT  
339 Grafting and budding fruit trees AG EXT

## APPLES (Cont'd)

- SB-2 Spraying program (For sale only -- 35¢) AG EXT  
L-1 Disease and insect control for home orchards and small fruits AG EXT  
65 Budding and grafting on hardy apple stocks OAES  
508 Apple thinning OAES  
584 Removal of spray residues from apples OAES  
618 Bloom period and yield of apples OAES  
661 Record of a 50-year old apple orchard OAES  
694 Physiological effects of excess soil moisture on Stayman Winesap apples OAES  
720 Grower control of the Codling Moth OAES  
L-187 Blight of pears, apples and quinces USDA  
L-274 Control of apple tree borers USDA  
F-1380 Apple scald and its control USDA  
F-1897 Establishing and managing young apple orchards USDA  
(See also under Fruits)

**There is no other Advertising Medium**

**just like the CLASSIFIED SECTION of this**

**FARM and BUSINESS DIRECTORY. It is**

**always on duty, day or night, ready to guide**

**the buyer to your products or services**

# The NATIONAL BANK OF DOVER

" Established 1867 "

WE STAND READY  
AT ANY TIME  
TO ASSIST YOU  
IN YOUR  
**BUYING & SELLING**  
PROGRAM.



OUR  
**FARM DEPARTMENT**  
IS QUALIFIED  
BY COLLEGE  
TRAINED AGRICULTURAL  
PERSONNEL, TO ASSIST IN  
YOUR FARM PROBLEMS.

PHONE

**4 2 1 0 4**

301 WEST THIRD ST.

DOVER, OHIO

## THE BRUCE LUMBER COMPANY

" Where Better Builders Buy Better Buys for Builders "

**BUILDING SUPPLIES - INSULATION  
ROOFING - SIDING - PAINTS - VARNISHES  
SASH and DOORS - BUILDERS HARDWARE**

**LUMBER - MILLWORK**

PHONES

4-2336 - 42337

1047 N. TUSCARAWAS AVE.

DOVER, OHIO

### BARLEY

- L-8 Barberry eradication AG EXT
- L-315 Barberry spreads rust USDA
- F-1599 Scab of wheat and barley and its control USDA
- F-1732 Growing barley for malt and feed USDA

### BEANS

- MM-34 Beans in the home garden AG EXT
- SB-4 Control of garden insects and diseases (For sale only -- 20¢) AG EXT
- 701 Evaluation of fresh, frozen and canned snap beans OAES
- IS-61 Saving beans from mosaic USDA
- IS-62 Saving beans from bacterial blight USDA
- F-1276 The velvet bean USDA
- F-1915 Snap beans for marketing, canning, and freezing USDA
- L-223 Growing field beans in humid areas USDA
- L-370 The seed-corn maggot on beans USDA
- IS-70 Save beans from watery soft rot USDA
- F-1624 Mexican bean beetle in the East and its control USDA
- F-1692 Bean diseases and their control USDA  
(See also under Gardening)

### BEEF CATTLE

- 332 Commercial beef cow herds in Ohio AG EXT
- L-23 Tips on controlling bloat AG EXT
- 89 Livestock bloat on pasture OAES
- 15 Hill grassland for beef production OAES
- 703 Crossbreeding beef cattle OAES
- 707 Purchasing feeder cattle, calves, sheep and lambs OAES
- 732 Supplements to poor quality hay for fattening cattle OAES
- L-319 Control of lice on cattle USDA
- L-355 Hyperkeratosis (X-disease) of cattle USDA
- L-369 Wipe out brucellosis USDA
- F-1135 The beef calf: its growth and development USDA

- F-1415 Beef on the farm: slaughtering, cutting, curing USDA
- F-1459 Feeding cattle for beef USDA
- F-1584 Feedlot and ranch equipment for beef cattle USDA
- F-1592 Beef production on the farm USDA
- F-1600 Dehorning, castrating, branding and marking beef cattle USDA
- F-1779 Beef cattle breeds for beef and for beef and milk USDA  
(See also Cattle diseases and parasites; Livestock)

### BEEES & HONEY

- 254 Bees for honey production and pollination AG EXT
- 253 Honeybees increase clover seed production AG EXT
- 281 Modified 2-queen system for honey production AG EXT
- 159 Package bees for honey production and pollination AG EXT
- H-G-37 Honey - some ways to use it AG EXT
- F-961 Transferring bees to modern hives USDA
- F-2074 American foulbrood control USDA

### BERRIES

- 310 Growing small fruits commercially in Ohio AG EXT
- 321 How to grow strawberries AG EXT
- 323 How to grow bush fruits AG EXT
- L-1 Disease and insect control for home orchards and small fruits AG EXT
- 304 Pruning small fruits AG EXT
- F-887 Raspberry culture USDA
- F-1028 Strawberry culture: eastern United States USDA
- F-1043 Strawberry varieties in the United States USDA
- F-1398 Currants and gooseberries: their culture and relation to white pine blister rust USDA
- F-1560 Preparing strawberries for market USDA
- F-1951 Blueberry growing USDA
- F-1995 Growing erect and trailing blackberries USDA



**BUILDINGS**

- 143 Termites and insects mistaken for them AG EXT
- 72 Farm and home underground storage made of steel OAES
- L-56 Preventing cracks in new wood floors USDA
- L-287 Farmhouse plans for minimum budgets USDA
- L-124 Sash greenhouses USDA
- L-301 Expansible farmhouses USDA
- L-311 Farmhouses for the North USDA
- L-314 Inclined-column grain drier USDA
- L-320 Two-temperature walk-in refrigerator for the farm USDA
- L-324 Soil treatment an aid in termite control USDA
- L-356 Expansible farmhouse: Frame USDA
- L-357 Expansible farmhouse: Masonry USDA
- L-358 Powder-post beetles in buildings USDA
- L-376 Split-level expansible farmhouse USDA
- G-12 Your farmhouse--planning the kitchen and workroom USDA
- G-18 Easy-to-build kitchen cabinets for the remodeled farmhouse USDA
- G-19 Your farmhouse--planning the bathroom USDA
- G-42 Your farmhouse--how to plan remodeling USDA
- AB-98 Loose housing for dairy cattle USDA
- AB-123 Stall barns for dairy cattle USDA
- F-1318 Greenhouse construction, heating USDA
- F-1512 Protecting farm buildings and property from lightning USDA
- F-1554 Poultry houses and fixtures USDA
- G-1572 Making cellars dry USDA
- F-1756 Selection of lumber for farm and home building USDA
- F-1772 Use of concrete on the farm USDA
- F-1820 Silos: types and construction USDA
- F-1865 Closets and storage spaces USDA
- F-1869 Foundations for farm buildings USDA
- F-1889 Fireplaces and chimneys USDA
- F-1911 Preventing damage to buildings by subterranean termites and their control USDA

- F-1950 Sewage and garbage disposal on the farm USDA
- F-1993 Decay and termite damage in houses USDA
- F-2018 Control of nonsubterranean termites USDA
- F-2070 Fire-resistant construction on the farm USDA

**BUTCHERING & CURING**

- L-273 Curing pork country style USDA
- F-1186 Pork on the farm: killing, curing and canning USDA
- F-1415 Beef on the farm: slaughtering, cutting and curing USDA
- F-1807 Lamb and mutton on the farm USDA

**CATTLE**

See under Beef Cattle; Cattle Diseases and Parasites; Dairy Cattle; Livestock

**Cattle Diseases & Parasites**

- L-23 Tips on Controlling bloat AG EXT
- 229 Controlling cattle grubs and treating for cattle lice AG EXT
- L-75 Warts on cattle USDA
- F-909 Cattle lice and how to eradicate them USDA
- F-1017 Cattle scab and methods of control and eradication USDA
- F-1018 Hemorrhagic septicemia "shipping fever" of cattle USDA
- F-1596 Cattle grubs or heel flies; suggestions for their control USDA

**CHICKENS**

See Poultry

**CLOVER**

- 261 Choosing and sowing meadow and pasture seedings AG EXT
- 347 Crop varieties AG EXT
- F-1741 Bur-clover cultivation and utilization USDA

**CLOVER (Cont'd)**

- F-1770 High-grade timothy and clover hay USDA
- F-1929 Persian clover USDA
- L-23 Sweet clover USDA
- L-176 Strawberry clover USDA
- L-119 White clover USDA
- L-160 Crimson clover USDA
- F-1484 The clover leaf weevil and its control USDA

**CORN**

- 331 Corn yield climbs by management AG EXT
- 347 Crop varieties AG EXT
- 144 Chinch bugs and their control AG EXT
- European corn borer and its control AG EXT
- 19 Evaluation of yellow sweet corn varieties for processing OAES
- 12 Trials of sweet corn for fresh market OAES
- 14 Summary of corn performance experiments in Ohio OAES
- L-284 Protect your garden corn from earworms USDA
- F-891 Corn root aphid and methods of controlling it USDA
- F-1679 Popcorn USDA
- F-1714 Corn culture USDA
- F-1822 Seed corn USDA
- F-1976 Handling and storing soft corn on the farm USDA
- F-2042 Commercial growing of sweet corn USDA
- F-2059 Irrigating corn USDA
- F-2073 Corn production USDA
- F-2076 Storage of ear corn on the farm in the North Central States USDA
- L-318 7 questions to ask when you buy or sell shelled corn by grade USDA
- L-331 Drying shelled corn and small grain with heated air USDA
- L-332 Drying shelled corn and small grain with unheated air USDA
- L-333 Drying ear corn with heated air USDA
- L-334 Drying ear corn with unheated air USDA
- L-23 Tips on controlling bloat AG EXT
- 316 Milking: sane, safe, sanitary AG EXT
- 294 Reproduction of dairy cattle AG EXT
- Fat Variations in milk AG EXT
- L-10 Production and care of cream for making butter AG EXT
- 229 Controlling cattle grubs and treating for cattle lice AG EXT
- L-34 Cutting corners on dairy costs AG EXT
- L-37 How bad off are dairy farmers AG EXT
- L-33 Milk check arithmetic AG EXT
- L-36 What is the market for Ohio milk AG EXT
- 687 Costs of producing milk in Ohio OAES
- 662 Dairy farming based on the liberal use of meadow crops OAES
- 700 How price plans affect seasonality of milk deliveries from farms OAES
- 731 Expeller vs. solvent process linseed oil meal for milking cows OAES
- L-283 Fly control on dairy cattle and in dairy barns USDA
- F-909 Cattle lice and how to eradicate them USDA
- F-1412 Care and management of dairy bulls USDA
- F-1422 Udder diseases of dairy cows USDA
- F-1443 Dairy cattle breeds USDA
- F-1470 Care, management of dairy cows USDA
- F-1723 Feeding, care, management of young dairy stock USDA
- F-1769 Dairy cattle judging USDA
- F-1974 The Dairy-Herd Improvement Association Program USDA
- F-1979 Making and storing farm butter for home use USDA
- F-1998 Selecting dairy cattle on basis of type and production records USDA
- F-2017 Clean milk production USDA
- F-2075 An American-type cheese - how to make it for home use USDA
- F-2078 Cleaning and sanitizing farm milk utensils USDA

**Dairying: Cattle, Management & Products**

- 72 Feeding dairy cattle AG EXT

SEE ALSO CATTLE PARASITES, DISEASES; LIVESTOCK

**DISEASES**

See animal or crop attacked

**EGGS**

See Poultry

**ELECTRICITY**

- FEC-3 Brooding chicks with infrared lamps AG EXT  
 F-1838 Electric light for the farmstead USDA  
 F-2039 Electric brooding saves pigs, lambs, feed USDA  
 F-2044 Using electricity in watering farm gardens  
 L-377 Lights for more winter eggs USDA  
 L-381 Infrared lamps--their use in brooding pigs USDA

**EROSION**

See Soil and Water Conservation

**Farm Management,  
Planning, Living**

- RP-17 Family farm-operating agreements AG EXT  
 RP-18 Family farm-transfer arrangements AG EXT  
 The challenge of agriculture AG EXT  
 LD-2 The citizen and his government AG EXT  
 LD-1 Four ways of doing business AG EXT  
 If you want to start farming AG EXT  
 Mental health AG EXT  
 Youth faces tomorrow AG EXT  
 37 What to look for in a farm AG EXT  
 39 Farming opportunities in Ohio AG EXT  
 45 Legal safeguards in buying a farm AG EXT  
 L-7 Facts on workman's compensation AG EXT  
 SB-8 Planning the farm business (for sale--5¢) AG EXT  
 LD-4 Price stability and farmers AG EXT  
 L-30 Feeding forage with less labor AG EXT  
 LD-5 Public schools of Ohio AG EXT  
 L-49 Correspondence courses AG EXT  
 How to live 100 years happily AG EXT

Questions, answers for busy farmers, homemakers AG EXT

- 521 Roadside marketing of agricultural products by Ohio farmers OAES  
 638 Public revenue in Ohio with special reference to rural taxation OAES  
 711 Ohio farm real estate prices OAES  
 712 Financing feeder livestock in Ohio OAES  
 716 Price-quality relationships of frozen, canned foods OAES  
 728 Market hogs can be graded accurately OAES  
 L-335 Farming terraced land USDA  
 M-701 Using credit for farmhouse improvements USDA  
 L-299 Questions and answers on where and how to get a farm USDA  
 F-1045 Laying out fields for tractor plowing USDA  
 F-1132 Planning the farmstead USDA  
 F-1526 Clearing land of brush and stumps USDA  
 F-1961 Getting started in farming USDA  
 F-2016 Insurance for farmers: fire, windstorm, crop-hail, liability and life USDA  
 F-2026 Father-son operating agreements USDA

**FEEDS & FEEDING**

See Livestock and specific crop or animal.

**FERTILIZERS**

- 327 Liming Ohio's acid soils AG EXT  
 262 Manure: management in barn and field AG EXT  
 338 Ohio fertilizer recommendations AG EXT  
 L-6 Taking stock of our soil AG EXT  
 L-13 For big yields, feed crops well AG EXT  
 261 Choosing and sowing meadow and pasture seedings AG EXT  
 553 Efficiency of soil and fertilizers as affected by soil reaction OAES  
 605 Farm manure OAES  
 708 Comparison of blast furnace slag and limestone OAES  
 IS-18 How much fertilizer shall I use USDA

**FERTILIZERS (Cont'd)**

- IS-46 Food crops need phosphate USDA  
 F-1801 Making lime on the farm USDA  
 F-2007 Mixing fertilizers on the farm USDA  
 F-2032 Liming soils for better farming USDA  
 Note--information on fertilizers often is included in crop bulletins.

**FINANCES**

See Farm Management, Planning, Living

**FIRE PROTECTION**

See Safety

**FORAGE CROPS**

- 261 Choosing and sowing meadow and pasture seedings AG EXT  
 347 Crop varieties AG EXT  
 GRASSLAND LEAFLETS OF THE OHIO AGRICULTURAL EXTENSION SERVICE  
 L-13 For big yields feed crops well AG EXT  
 L-14 Legumes--cream of Ohio's hay crop AG EXT  
 L-15 Machinery, harvesting forage crops AG EXT  
 L-17 Silo solved feed storage problems AG EXT  
 L-19 Getting most from forage crops AG EXT  
 L-20 Hay storage and the hay drier AG EXT  
 L-23 Tips on controlling bloat AG EXT  
 L-24 Rotation grazing AG EXT  
 345 Good pasture AG EXT  
 Grass silage AG EXT  
 L-28 Fall management of meadows AG EXT  
 L-30 Feeding forage with less labor AG EXT  
 L-26 Balanced farming, grass and legumes AG EXT  
 300 Lespedezas in Ohio agriculture AG EXT  
 MM-111 Spittlebugs and other insects on legumes AG EXT  
 588 Better methods of seeding meadows OAES  
 67 Insure legumes with inoculation OAES

- 662 Dairy farming based on meadow crops OAES  
 L-72 Measuring hay in stacks USDA  
 L-240 Kobe, a superior lespedeza USDA  
 L-348 The velvetbean caterpillar: How to control it USDA  
 L-373 Lespedezas for quail and good land use USDA  
 F-1276 The velvet bean USDA  
 F-1770 High-grade timothy and clover hay: Methods of producing, baling, and loading USDA  
 F-1798 Control of common white grubs in cereal and forage crops USDA  
 F-1850 The armyworm and its control USDA  
 F-1852 Lespedeza culture and utilization USDA  
 F-2064 Grasshoppers: A new look at an ancient enemy USDA  
 (More bulletins relative to forage crops are listed under specific crops and Grasses and Legumes)

**FORESTRY**

- F-1398 Culture of gooseberries, currants and relation to white pine blister rust USDA  
 F-1907 Equipment, methods for harvesting farm woodland products USDA  
 F-1989 Managing the small forest USDA  
 F-2049 Preservative treatment of fence posts USDA  
 F-2061 How to grow longleaf pine USDA  
 L-84 Planting black walnut USDA  
 L-86 Protect hardwood stands from grazing USDA  
 L-161 The eastern tent caterpillar USDA  
 L-183 Cankerworms USDA  
 L-340 Periodical cicada (17 year locust) USDA  
 L-244 Community forests for rural people USDA  
 L-265 Control of white-pine blister rust USDA  
 L-286 Prevent tanbark deterioration USDA  
 L-296 The red-headed pine sawfly USDA  
 F-1256 Slash pine USDA  
 F-1405 The windbreak as a farm asset USDA  
 F-1671 Shortleaf pine USDA  
 Estimating lumber in standing trees AG EXT

## FORESTRY (Cont'd)

- MM-39 Home grown Christmas trees for Ohio AG EXT  
 142 Ohio farm woods AG EXT  
 Pruning for lumber production AG EXT  
 Pruning pines for Christmas trees AG EXT  
 82 The Secret Arboretum OAES  
 87 Oak wilt in Ohio OAES  
 598 Forest fires in Ohio OAES  
 698 Wood wastes in Ohio OAES

## FRUITS

- 339 Grafting and budding fruit trees AG EXT  
 310 Growing small fruits commercially in Ohio AG EXT  
 123 Home storage--vegetables and fruits AG EXT  
 323 How to grow bush fruits AG EXT  
 334 How to grow grapes AG EXT  
 321 How to grow strawberries AG EXT  
 335 How to grow tree fruits AG EXT  
 SB-1 Irrigation for fruits and vegetables in Ohio (for sale only--5¢) AG EXT  
 313 Pruning fruit trees AG EXT  
 L-1 Disease and insect control for home orchards and small fruits AG EXT  
 226 Japanese beetle AG EXT  
 SB-2 Spraying program (revised yearly. For sale only--35¢) AG EXT  
 304 Pruning small fruits AG EXT  
 4 Distribution and control of the Japanese beetle in Ohio OAES  
 7 Marketing peaches OAES  
 17 Status of Ohio peach trees with respect to certain plant elements OAES  
 517 Survey of Ohio orchards relative to phosphorous distribution and acidity OAES  
 541 Experiments on thinning peaches OAES  
 550 Sugar, acidity and juice color determination in grapes OAES  
 569 Oriental fruit moth investigations in Ohio OAES  
 581 Peach production in Ohio OAES  
 672 Cover crop and sod plus mulch orchard soil management OAES  
 L-158 Quince growing USDA  
 L-161 The eastern tent caterpillar USDA

- L-172 Why fruit trees fail to bear USDA  
 L-187 Blight of pears, apples, and quinces USDA  
 227 Home fruit garden in Northeastern and North Central States USDA  
 F-776 Growing cherries east of the Rocky Mountains USDA  
 F-1001 Growing fruit for home use USDA  
 F-1369 Bridge grafting USDA  
 F-1567 Propagation of trees and shrubs USDA  
 F-1870 Pruning hardy fruit plants USDA  
 F-1895 Land slugs and snails and their control USDA  
 F-1970 Conserving soil and moisture in orchards and vineyards USDA  
 F-2004 Controlling the Japanese beetle USDA  
 F-2013 Containers in common use for fresh fruits and vegetables USDA  
 (Note---more publications on fruits are listed under specific fruits)

## GARDENING

- MM-34 Beans in the home garden AG EXT  
 L-2 Insect control in your garden AG EXT  
 123 Home storage---vegetables and fruits AG EXT  
 287 Home vegetable gardening AG EXT  
 SB-1 Irrigation for fruits and vegetables in Ohio (for sale only--5¢) AG EXT  
 MM-35 Potatoes in the home garden AG EXT  
 SB-4 Control of garden insects and diseases (for sale only--20¢) AG EXT  
 1 Experiments in control of tomato diseases and insects OAES  
 9 Wettable powder versus tank-mix dithiocarbamates on potatoes and tomatoes OAES  
 10 Ohio MR17--a new mosaic tolerant pickling cucumber OAES  
 11 Tomato late blight control in 1950 OAES  
 566 Factors affecting yield of kraut cabbage in Ohio OAES  
 570 Experiments with potatoes on muck soil OAES

## GARDENING (Cont'd)

- 629 Purity, germination, yield of some vegetable seeds in Ohio OAES  
 657 Experiments in growing tomatoes for canning OAES  
 671 Onion production in Ohio OAES  
 689 Ohio W-R globe OAES  
 701 Evaluation of fresh, frozen and canned snap beans OAES  
 726 Sensitivity of potatoes to soil porosity OAES  
 524 The potato scab-gnat OAES  
 702 Tomato pinworm OAES  
 539 Leaf mold resistance in the tomato OAES  
 615 Ohio potato diseases OAES  
 676 Effect of pesticides on cucumber, tomato, potato plants OAES  
 685 Tomato anthracnose OAES  
 L-128 Production of spinach USDA  
 L-129 Production and preparation of horseradish USDA  
 L-131 Production of eggplant USDA  
 L-134 Production of water cress USDA  
 L-135 Production of salsify or vegetable oyster USDA  
 L-136 Production of parsley USDA  
 L-138 Production of garlic USDA  
 L-140 Production of peppers USDA  
 L-141 Production of pumpkins and squashes USDA  
 L-142 Production of turnips and rutabagas USDA  
 L-154 Production of parsnips USDA  
 L-226 The pepper weevil USDA  
 L-237 Control of mole crickets USDA  
 L-243 Sphagnum moss for seed germination USDA  
 L-290 Protection of turf from damage by Japanese beetle grubs USDA  
 L-305 Okra: Culture and use USDA  
 L-349 Making plant containers USDA  
 L-350 The imported fire ant USDA  
 L-351 Growing eggplant USDA  
 L-353 Commercial growing of carrots USDA  
 L-354 Rhubarb production--outdoors and in USDA  
 L-360 Growing table beets USDA  
 G-9 Suburban and farm vegetable gardens USDA  
 G-23 Vegetable gardeners' handbook on insects and diseases USDA  
 G-29 Cutworms in the garden USDA  
 F-1668 The red harvester ant and how to subdue it USDA  
 F-1875 Mushroom growing in the United States USDA  
 F-1945 The pea aphid on peas USDA  
 F-1953 Lettuce varieties and culture USDA  
 F-1971 The pea weevil and methods for its control USDA  
 F-2013 Containers in common use for fresh fruits and vegetables USDA  
 F-2020 Commercial growing and harvesting of sweetpotatoes USDA  
 F-2044 Using electricity in watering farm gardens USDA  
 F-2051 Pepper production, disease and insect control USDA  
 F-1269 Celery growing USDA  
 F-1318 Greenhouse construction and heating USDA  
 F-1390 Vegetable seeds for the home and market garden USDA  
 F-1394 Watermelons USDA  
 F-1418 Lettuce growing in greenhouses USDA  
 F-1423 Preparation of cabbage for market USDA  
 F-1439 Diseases of cabbage and related plants USDA  
 F-1468 Muskmelons USDA  
 F-1563 Cucumber growing USDA  
 F-1646 Asparagus culture USDA  
 F-1735 Pea diseases and their control USDA  
 F-1743 Hotbeds and coldframes USDA  
 F-1895 Land slugs and snails and their control USDA  
 F-1957 Cauliflower and broccoli varieties and culture USDA  
 F-2004 Controlling the Japanese beetle USDA  
 (More publications on gardening are listed under specific vegetables and in the gardening section in homemakers' publications)

## GOATS

See Sheep and Goats

## GRAINS

- 331 Corn yields climb by management AG EXT  
 347 Crop varieties AG EXT  
 144 Chinch bugs and their control AG EXT  
 European corn borer and its control AG EXT  
 L-8 Barberry eradication AG EXT  
 79 Monroe soybeans OAES

**MACHINERY & OTHER EQUIPMENT**

(Cont'd)

- 325 Efficient and safe corn picker operation AG EXT
- 330 Harvesting with combines AG EXT
- 272 Labor saving devices for farm, home AG EXT
- 643 Combine harvester investigations OAES
- F-1490 Hog-lot equipment USDA
- F-1690 Plowing with moldboard plows USDA
- F-1754 Care and repair of mowers and binders USDA
- F-1761 Harvesting with combines
- F-1832 Farm fences USDA
- F-1907 Equipment and methods for harvesting farm woodland products USDA
- F-1931 Care and use of rope on the farm USDA
- F-1992 Disk plows and their operation USDA
- F-2028 Drying forage by forced ventilation USDA
- F-2062 How to spray the aircraft way USDA
- F-2078 Cleaning and sanitizing farm milk utensils USDA

**NUTS**

- F-1501 Nut-tree propagation USDA
- F-2068 Chestnut blight and resistant chestnuts USDA
- L-84 Planting black walnut USDA
- L-384 Chestnut weevils: How to control them USDA

**OATS**

- 347 Crop varieties AG EXT
- F-1941 Grow disease-resistant oats USDA
- L-315 Barberry bushes spread stem rust to oats USDA
- L-8 Barberry eradication AG EXT

**ONIONS**

- 671 Onion production in Ohio OAES
- F-1060 Onion diseases and their control USDA
- F-1955 Onion-set production USDA
- F-1956 Growing the transplant onion crop USDA
- L-372 Onion thrips USDA  
(See gardening)

**PASTURES**

See Forage Crops, Grasses, Legumes

**PEACHES**

- 335 How to grow tree fruits AG EXT
- 313 Pruning fruit trees AG EXT
- L-1 Disease and insect control for home orchards and small fruits AG EXT
- SB-2 Spraying program (for sale only--35¢) AG EXT
- 7 Marketing peaches, Canton, Youngstown area OAES
- 541 Experiments in thinning peaches OAES
- 581 Peach production in Ohio OAES
- F-1246 The peach borer--How to prevent or lessen its ravages USDA
- F-1702 Preparing peaches for market USDA
- F-2021 Peach growing east of the Rocky Mountains USDA  
(See Fruits for more publications on peaches)

**POTATOES**

- MM-35 Potatoes in the home garden AG EXT
- SB-4 Control of garden insects and diseases (for sale only--20¢) AG EXT
- 570 Experiments with potatoes on muck soil OAES
- 524 The potato scab-gnat OAES
- 615 Ohio potato diseases OAES
- F-1881 Potato diseases and their control USDA
- F-1958 Potato production in North Central States USDA
- F-1986 Potato storage USDA
- F-2040 Control of potato insects USDA
- L-229 The potato leafhopper USDA
- L-361 The golden nematode of potatoes and tomatoes USDA  
(See gardening also)

**POULTRY**

- 320 Coccidiosis in chickens AG EXT
- L-32 Blackhead can be controlled AG EXT
- 344 Dressing poult y--live bird to freezer AG EXT
- 342 Ohio poultry rations AG EXT
- 333 The egg and you AG EXT

**POULTRY (Cont'd)**

- 326 Keep the layers, sell the loafers-AG EXT
- 296 Ohio summer range shelter AG EXT
- 269 Pastures for poultry AG EXT
- 317 Raising chickens in Ohio AG EXT
- 709 Economic importance of cracked eggs to Ohio poultry industry OAES
- 710 Cleaning eggs for market OAES
- F-684 Squab raising USDA
- F-697 Duck raising USDA
- F-767 Goose raising USDA
- F-849 Capons and caponizing USDA
- F-1378 Marketing eggs USDA
- F-1391 The guinea fowl USDA
- F-1409 Turkey raising USDA
- F-1508 Poultry keeping in back yards USDA
- F-1524 Farm poultry raising USDA
- F-1538 Incubation and brooding of chickens USDA
- F-1554 Poultry houses and fixtures USDA
- F-1614 Business records for poultry keepers USDA
- F-1652 Diseases and parasites of poultry USDA
- F-1727 Selecting hens for egg production USDA
- F-1815 Grading dressed turkeys USDA
- F-2065 Breeds of chickens for meat and egg production USDA
- L-207 Controlling gapeworms in poultry USDA
- L-233 Selecting breeding stock for broiler production USDA
- L-327 Seven ways to greater egg profit USDA
- L-366 Poultry lice: How to control them USDA
- L-377 Lights for more winter eggs USDA
- L-382 The fowl tick: How to control it USDA

**RABBITS**

- L-245 Palpating domestic rabbits to determine pregnancy USDA
- F-1730 Rabbit production USDA
- L-378 A rounded-corner hutch for rabbits USDA

**Safety & Sanitation**

- L-22 How to avoid becoming a statistic AG EXT

- AH-38 First aid for flooded homes and farms USDA
- F-1512 Protection of buildings and farm property from lightning USDA
- F-2070 Fire-resistant construction on the farm USDA
- F-1950 Sewage and garbage disposal on the farm USDA
- F-1991 The use of disinfectants on the farm USDA
- L-38 Maintaining the health of livestock in transit USDA

**SHEEP & GOATS**

- 571 Influence of factors on fine wool from Merino sheep OAES
- 690 Corn cobs for lambs OAES
- SB-9 Sheep-raising in Ohio (for sale 10¢) AG EXT
- F-576 Breeds of sheep for the farm USDA
- F-713 Sheep scab USDA
- F-810 Equipment for farm sheep raising USDA
- F-1134 Castrating and docking lambs USDA
- F-1199 Judging sheep USDA
- F-1632 Karakul sheep USDA
- F-1710 Range sheep production USDA
- F-1807 Lamb and mutton on the farm USDA
- F-1943 Diseases of sheep and goats USDA
- F-2039 Electric brooding saves pigs, saves lambs, saves feed USDA
- F-2057 The sheep tick and its eradication USDA
- F-2058 Sheep raising on the farm USDA
- L-92 Preparing wool for market USDA
- L-228 Nodular worm disease of sheep USDA
- L-308 Control of lice and sheep ticks on sheep and goats USDA

**Soil & Water Conservation & Wildlife**

- 5 Contour fencing OAES
- 589 Soil erosion in Ohio OAES
- 585 Effect of land use and management on erosion OAES
- Larceny in the henhouse AG EXT
- Farm pond management AG EXT
- You can make a flushing bar AG EXT
- F-1750 Summer crops for green manure and soil improvement USDA

**SOIL & WATER CONSERVATION (Cont'd)**

- F-1970 Conserving soil and moisture in orchards and vineyards USDA
- F-1973 Irrigated pastures for forage production and soil conservation USDA
- F-1981 Strip cropping for conservation and production USDA
- F-1983 Farm fishponds for food and good land use USDA
- F-1997 Stubble-mulch farming to hold soil and water USDA
- F-2002 For insurance against drought: Soil and water conservation USDA
- F-2035 Making land produce useful wildlife USDA
- L-249 What is a conservation farm plan? USDA
- L-254 Using tall fescue in soil conservation USDA
- L-257 Grass waterways USDA
- L-259 How to build a farm pond USDA
- L-260 Dust storms come from the poorer lands USDA
- L-282 Know your watersheds USDA
- L-323 Wood chips for the land USDA
- L-328 Your soil--crumbly or cloddy USDA
- L-335 Farming terraced land USDA
- L-373 Lespedezas for quail and good land use USDA
- L-374 The multiflora rose for fences and wildlife USDA
- AB-78 From the dust of the earth USDA

**SOILS**

- 327 Liming Ohio's acid soils AG EXT
- 338 Ohio fertilizer recommendations AG EXT

**SOYBEANS**

- 347 Crop varieties AG EXT
- 79 Monroe soybeans OAES
- F-2024 Soybean production for hay and beans USDA
- F-2038 Soybeans for feed, food, and industrial products USDA
- F-2077 Soybean diseases USDA

**STORAGE**

- F-1260 Stored-grain pests USDA
- F-1442 Storage of sweetpotatoes USDA

- F-1976 Handling and storing soft corn on the farm USDA
- F-1979 Making and storing farm butter for home use USDA
- F-1986 Potato storage USDA
- F-2071 You can store grain safely on the farm USDA
- F-2076 Storage of ear corn on the farm in the North Central States USDA
- L-195 Mealworms USDA
- L-345 Insects in farm-stored wheat: How to control them USDA

**SUGAR CROPS**

- F-2054 Control of the sugar beet nematode USDA
- F-2060 Sugar beet culture in the North Central States USDA

**TOBACCO**

- 280 Tobacco plant bed AG EXT
- 297 White burley tobacco AG EXT
- 590 Tobacco cultural and fertility tests OAES
- F-523 Tobacco curing USDA
- F-1494 Tobacco cutworms and their control USDA
- F-2023 Tobacco diseases and their control USDA
- L-336 Control of hornworms on tobacco USDA

**TOMATOES**

- SB-10 Growing greenhouse tomatoes (for sale--60¢) AG EXT
- SB-4 Control of garden insects and diseases (for sale only--20¢) AG EXT
- 1 Experiments in control of tomato diseases and insects OAES
- 11 Tomato late blight control in 1950 OAES
- 657 Experiments in growing tomatoes for canning OAES
- 702 Tomato pinworm OAES
- 539 Leaf mold resistance in the tomato OAES
- 676 Effect of pesticides on cucumber, tomato and potato plants OAES
- 685 Tomato anthracnose OAES
- IS-63 Late blight of tomatoes USDA
- F-1291 Preparation of fresh tomatoes for market USDA

**TOMATOES (Cont'd)**

- F-1901 Production of tomatoes for canning and manufacturing USDA
- F-1934 Tomato diseases USDA
- F-2045 Commercial production of tomatoes USDA
- L-361 The golden nematode of potatoes and tomatoes: How to prevent its spread USDA
- L-367 The tomato fruitworm: How to control it USDA

**Water & Drainage**

- F-1978 Safe water for the farm USDA
- F-2046 Farm drainage USDA
- F-2047 Maintaining drainage systems USDA
- L-347 Keep your tile drains working USDA
- M-674 Planning the electric water system USDA  
(See also Irrigation; Soil and Water Conservation.)

**Weeds & Poisonous Plants**

- 337 Chemical weed control in field crops AG EXT
- L-50 Chemical weed control recommendations AG EXT
- 146 Eradicating Canada thistle AG EXT
- L-43 Killing quackgrass AG EXT
- RP-36 Weeds of North Central States (sale only--75¢) AG EXT
- L-88 Poisoning of livestock by plants that produce hydrocyanic acid USDA

**WILDLIFE**

See your county agent or write to: Fish and Wildlife Service, United States Department of the Interior, Washington 25, D. C.  
(See also Soil and Water Conservation)

**YOUTH**

Your son or daughter may join a 4-H Club by contacting your local leader or by seeing the county club agent in the Extension office.

- F-988 Larkspur or "poison weed" USDA
- F-1054 The loco-weed disease USDA
- F-1161 Dodder USDA
- F-1972 Poison-ivy, poison-oak, and poison sumac USDA
- F-2062 How to spray the aircraft way USDA

**WHEAT**

- 347 Crop varieties AG EXT
- L-8 Barberry eradication AG EXT
- 144 Chinch bugs and their control AG EXT  
Treating grain in the bin AG EXT
- 507 Trend for wheat production in Ohio OAES
- 563 Influence of climate, soil fertilizers on quality of soft winter wheat OAES
- 568 Wheat roots and winter injury OAES
- L-298 Grading soft red winter wheat at country points USDA
- F-1599 Scab of barley and wheat and its control USDA
- F-1607 Nematode disease of wheat and rye USDA
- F-1711 Wheat smuts and their control USDA
- F-1902 Varieties of spring wheat for North Central States USDA
- F-1323 The wheat strawworm and its control USDA
- F-1429 Emmer and spelt USDA
- F-1627 The Hessian fly and how losses from it can be avoided USDA
- L-315 Barberry bushes spread stem rust to wheat, oats, barley, rye USDA
- L-345 Insects in farm-stored wheat USDA
- L-380 The wheat jointworm USDA

## BULLETINS FOR HOMEMAKERS

Ohio homemakers, just as Ohio farmers, will find the COUNTY EXTENSION OFFICE is their best source of information about modern practices in homemaking.

Homemakers' information also is as near as their telephone. THE HOME DEMONSTRATION AGENT, a member of the staff of OHIO STATE UNIVERSITY, may be reached by calling the number listed under AGRICULTURAL EXTENSION SERVICE.

The HOME AGENT will have all of the EXTENSION bulletins that follow, some of the EXPERIMENT STATION bulletins and some of the USDA bulletins.

For instructions on how to obtain the following bulletins, turn to page 7 where you will find the headings AGRICULTURAL EXTENSION SERVICE, OHIO AGRICULTURAL EXPERIMENT and UNITED STATES DEPARTMENT OF AGRICULTURE.

### BUYING GUIDES

- 168 Buy gas ranges with \$ and sense AG EXT
- 276 When you buy your automatic refrigerator AG EXT
- 278 When you buy your conventional washing machine AG EXT
- 275 When you buy your electric range AG EXT
- 277 When you buy your power ironer AG EXT
- F-1837 Cotton shirts for men and boys USDA
- L-264 Know your butter grades USDA
- L-310 U.S. grades for beef USDA
- G-1 Family fare: Food management and recipes USDA
- G-16 Buying sweaters for the family USDA
- G-21 A fruit and vegetable buying guide for consumers USDA
- G-26 Egg buying guides for consumers USDA
- G-31 Buying women's coats and suits USDA
- G-34 Poultry buying guides for consumers USDA
- G-38 Buying your home sewing machine USDA
- AB-92 The inspection stamp as a guide to wholesome meat USDA
- IS-56 How to choose and use your refrigerator USDA
- M-688 Buying men's suits USDA (More bulletins that include buying information are listed under specific commodities and under Home Management)

### CANNING

- AIS-64 Home canning fruits and vegetables AG EXT

- AWI-110 Home canning meat AG EXT
- AWI-104 Tomatoes on your table AG EXT
- L-269 Pickle and relish recipes USDA
- L-278 Tomatoes on your table USDA
- F-1800 Homemade jellies, jams and preserves USDA
- F-1932 Preservation of vegetables by salting or brining USDA
- F-1454 Home utilization of muscadine grapes USDA
- G-6 Home canning of meat USDA
- G-8 Home canning of fruits and vegetables USDA
- G-30 Pressure canners--use and care USDA (See also specific commodity in preceding section)

### CHILD DEVELOPMENT

- 84 Child care AG EXT
- 184 Guiding behavior of children AG EXT
- MM-19 Homemade toy ideas (for sale only--15¢) AG EXT
- Ways with children AG EXT

### CLOTHING & TEXTILES

- 155 Garment construction AG EXT
- 242 Mending clothes AG EXT
- 506 Influence of laundering, light exposure upon wash silks OAES
- 645 Comparison of cotton, rayon, glass curtain fabrics OAES
- 649 Factors in selection of sewing thread OAES
- IS-72 Preventing and removing mildew USDA
- L-251 Child's self-help overalls USDA
- F-1474 Stain removal from fabrics USDA

### CLOTHING & TEXTILES (Cont'd)

- F-1523 Leather shoes--Selection and care USDA
- F-1786 Fireproofing fabrics USDA
- F-1894 Coat-making at home USDA
- F-1925 ABC's of mending USDA
- F-1954 Making a dress at home USDA
- F-1960 Carpet and rug repair USDA
- F-1964 Fitting dresses USDA
- F-1968 Pattern alteration USDA
- G-11 Fitting coats and suits USDA
- G-20 How to tailor a woman's suit USDA
- G-39 Mending men's suits USDA

### Foods, Nutrition & Health

- L-326 Dry beans, peas, lentils AG EXT
- 228 Milk as food AG EXT
- SB-5 Planning community meals (for sale only--15¢) AG EXT
- 133 Three meals a day AG EXT
- 54 Vitamins AG EXT
- 273 Yeast bread and rolls AG EXT
- 156 Child and his food AG EXT
- 549 Food habits, physical development of preschool children OAES
- G-13 Food for families with school children USDA
- AH-30 First aid for flooded homes and farms USDA
- L-268 Eat a good breakfast to start a good day USDA
- L-288 National food guide USDA (See also Farm Management, Planning, Living in preceding section)

### FREEZING

- 340 Freezing and using prepared foods AG EXT
- L-279 Chicken in the freezer USDA
- L-321 What to do when your home freezer stops USDA
- G-10 Home freezing of fruits and vegetables USDA
- G-15 Freezing meat and poultry products for home use USDA
- G-40 Freezing combination main dishes USDA

### GARDENING

Most of the following bulletins are on flowers, lawns, shrubs, trees, etc. See gardening in preceding section for complete list of gardening bul-

letins. See also specific crops or vegetables and fruits in preceding section.

- 260 Selecting and planting shade trees AG EXT
- SB-13 Home flower gardening (sale only--10¢) AG EXT
- 271 Your lawn AG EXT
- L-90 Rockeries USDA
- L-124 Sash greenhouses USDA
- L-184 The elm leaf beetle USDA
- L-185 Elm bark beetles USDA
- L-199 Gardenia culture USDA
- L-206 Culture of orchids USDA
- L-243 Sphagnum moss for seed germination USDA
- L-281 Pointers on making good lawns USDA
- L-290 Protection of turf from damage by Japanese beetle grubs USDA
- L-329 Control of Dutch elm disease and elm phloem necrosis USDA
- L-341 The meadow spittlebug: How to control it USDA
- L-349 An improved method of making plant containers USDA
- L-374 The multiflora rose for fences and wildlife USDA
- G-25 Roses for the home USDA
- G-28 Ants in the home and garden: How to control them USDA
- F-1171 Growing annual flowering plants USDA
- F-1567 Propagation of trees and shrubs USDA
- F-1855 Culture, diseases, and pests of the box tree USDA
- F-1860 Gladiolus diseases and insects USDA
- F-1872 House plants USDA
- F-1896 Care of damaged shade trees USDA
- F-1987 Common diseases of important shade trees USDA

### HOME FURNISHINGS

- 171 Hand made rugs AG EXT
- 198 How to refinish furniture AG EXT
- Make your own draperies (for sale only--20¢) AG EXT
- Re-upholstering a chair at home (for sale only--15¢) AG EXT
- 153 Weaving seats in furniture AG EXT
- SB-7 Basketry (sale only--5¢) AG EXT

## Housing, Household Equipment, Management

- Do's and don'ts in use and care of:  
Automatic refrigerators AG EXT  
Electric hand irons AG EXT  
Electric ranges AG EXT  
Electric washers AG EXT  
Farm and home business centers (for sale only--15¢) AG EXT
- AWI-20 How to make your electric cords last longer AG EXT  
Gas range AG EXT  
Kerosene range AG EXT
- 243 How to get the best from your kerosene range AG EXT
- MM-30 More space in your kitchen cupboard AG EXT  
Planning the interior of the house AG EXT
- L-4 Short cuts in housework AG EXT  
Soft coal and wood--how to burn AG EXT
- 214 Legal safeguards for your home AG EXT
- 279 Floor plan for your kitchen AG EXT
- 319 Easy way to iron a shirt AG EXT  
Home-account book AG EXT  
Ohio home demonstration council manual AG EXT
- 244 Take a look at your posture AG EXT
- 270 A wheel table for you AG EXT
- 715 Study of the use of three types of automatic washers OAES
- 717 Laundering blankets in automatic washers and dryers OAES
- F-1460 Simple plumbing repairs in the home USDA
- F-1889 Fireplaces and chimneys USDA
- F-1944 Sewing machines: Cleaning and adjusting USDA
- F-1950 Sewage and garbage disposal on the farm USDA
- L-56 Preventing cracks in new wood floors USDA
- L-69 Preservation of leather book-bindings USDA
- L-321 What to do when your home freezer stops USDA
- G-12 Your farmhouse--Planning the kitchen and workroom USDA
- G-14 A step-saving U kitchen USDA
- G-18 Easy-to-build kitchen cabinets for the remodeled farmhouse USDA
- G-19 Your farmhouse--Planning the bathroom USDA
- G-42 Your farmhouse . . . how to plan remodeling USDA

## HOUSEHOLD INSECTS

- SB-3 Injurious household insects (for sale only--15¢) AG EXT
- IS-52 Protect home-cured meat from insects USDA
- L-144 Cockroaches and their control USDA
- L-149 Silverfish USDA
- L-182 Housefly control USDA
- L-186 Domestic mosquitoes USDA
- L-324 Soil treatment: An aid in termite control USDA
- L-337 Bedbugs: How to control them USDA
- L-365 Wasps: How to control them USDA
- G-24 Clothes moths and carpet beetles: How to combat them USDA
- G-28 Ants in the home and garden: How to control them USDA
- F-2018 Control of nonsubterranean termites USDA

## RECIPES

- SB-6 Cooking for Ohio families (sale only--75¢) AG EXT
- F-1977 Savory herbs: Culture and use USDA
- F-1979 Making and storing farm butter for home use USDA
- F-2075 An American-type cheese . . . how to make it for home use USDA
- L-74 Boning lamb cuts USDA
- L-213 Sour cream: How to prepare and use it USDA
- L-261 Egg dishes for any meal USDA
- L-262 Cheese in your meals USDA
- L-263 Recipes for evaporated apple rings USDA
- L-275 How to use whole and nonfat dry milk USDA
- L-278 Tomatoes on your table USDA
- L-293 Sweetpotato recipes USDA
- L-295 Potatoes in popular ways USDA
- L-312 Apples in appealing ways USDA
- L-326 Dry beans, peas, lentils--- modern cookery USDA
- L-359 Kieffer pears for home use USDA
- G-1 Family fare: Food management and recipes USDA
- G-27 Meat for thrifty meals USDA
- G-33 Root vegetables in everyday meals USDA
- G-35 Ways to cook rabbit USDA
- G-36 Peanut and peanut butter recipes USDA
- G-37 Honey, Some ways to use it USDA
- G-41 Green vegetables for good eating USDA
- G-43 Money-saving main dishes USDA
- G-45 Turkey on the table the year round USDA

# AMERICAN BREEDERS SERVICE

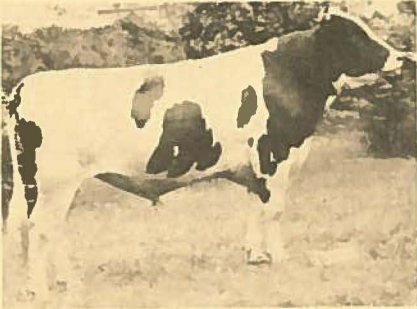
## ALVIN R. FLICKINGER TECHNICIAN

### FOR ARTIFICIAL BREEDING

**JERSEY**

**GUERNSEY**

**HOLSTEIN**



**ANGUS**

**M. SHORTHORN**

**BROWN SWISS**

*Every Sire proved great*

WE "BOARD" THEM ON OUR FARM ———

WE SERVICE YOUR HERD ON YOUR FARM

**PHONE**

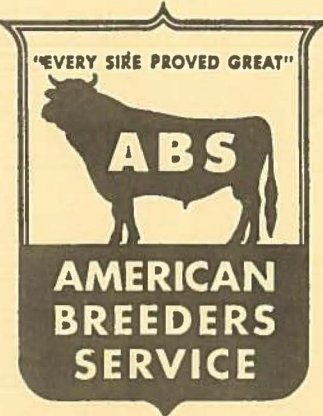
5747

**R.F.D. 1**

**STRASBURG**

**County Road 102**

**Just South of Bridge**



**LUMBER**  
**MILLWORK**  
**BUILDERS HARDWARE**

**Midway Lumber Co., Inc.**

COMPLETE  
 BUILDING  
 SERVICE

PHONE

**4-2975**

205 S. Tuscarawas Ave

DOVER, OHIO

FOR FRESH STOCK , VARIETY, BEST ARRANGEMENT

ORDER YOUR

**FLOWERS**

FROM

**TWIN CITY GREENHOUSE INC.**

*Graduations - Weddings - Funerals*

*Holidays - Illness*

*Special Events*

*Anniversaries*

*Parties*



FOR FAST SERVICE  
 PHONE

**380** OR **381**

N. WATER ST. EXT.

UHRICHSVILLE

**KOHL LUMBER & SUPPLY CO.**

MILL WORK BUILDING CONTRACTORS PH 44325 GNADENHUTTEN

1CL

**CLASSIFIED  
 BUSINESS DIRECTORY**

CONTAINING THE ADDRESS AND PHONE NUMBER OF THE COUNTY'S LEADING BUSINESS FIRMS THE PRODUCTS THEY SELL AND THE SERVICES THEY RENDER CAREFULLY CATALOGED TO EASE YOUR SHOPPING. SEE THE ADVERTISERS INDEX

AT THE END OF THE YELLOW PAGES

ABSTRACTORS-LAND TITLES

Ervin Robert C 152½ N Broadway Ph  
 51421 New Phila O

AIR CONDITIONING

Brown's Western Auto 114 E High Ave  
 Ph 42909 New Phila O  
 Holland Furnace Co 164 S Broadway Ph  
 4-2705 Dover O  
 Kreamer-Weber Co 313 N Tuscarawas  
 Ave Ph 42884 Dover O  
 Sugar Creek Heating & Roofing Co Ph  
 Day 91M & Nite 67M Sugar Creek O

ALUMINUM SIDING

Home Engineering Co 350 Boulevard  
 Ph 39904 Dover O

AMBULANCE

Lindsey R K Funeral Home 26 Grant  
 St Ph 231 Dennison O

AMBULANCE SERVICE

Kaserman Funeral Home 246 E High  
 Ave Ph 4-2803 New Phila, O  
 (See advertisement this page)  
 Linn-Hert Co 116 Second St NE Ph  
 4-2347 New Phila O  
 Meese Funeral Home 427 E 3rd St Ph  
 42003 Dover O

"Serving with pride Since 35"

**Kaserman  
 Funeral Home**

*Ambulance*

*Service*

PHONE

**4-2803**

NEW PHILADELPHIA

OHIO

ANTENNAS-TOWERS

Eiler Record & Appliance 227 W 3rd  
 St Ph 6-2841 Dover O

APPLIANCE STORES

Sears, Roebuck and Co 121 W Third St  
 Ph 42020 Dover O  
 Wilmar 122 S Wooster Ph 4-2823 Dover  
 O

APPLIANCES

Eiler Record & Appliance 227 W 3rd St  
 Ph 6-2841 Dover O

TELL THE ADVERTISER ;.....  
 You Saw Him In The Yellow Pages

WATER SYSTEMS  
 PUMPS & SUPPLIES

**MARION HARVEY & CO.**

COMMERCIAL PROSPECTING & TESTING

STRASBURG  
 PHONE 4291



**AUTOMOBILE SERVICE (Contd)**

  
**DELCO BATTERIES**  
**AUTO ACCESSORIES**  
 AUTOMOBILE EXPERT REPAIRING  
*Specializing in Lubrication*  
**DREHER & SON SERVICE**  
 U.S. ROUTE 21 NORTH  
 RFD NO. 2 DOVER, OHIO

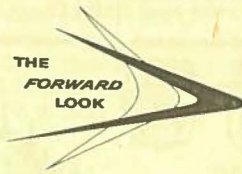
  
**JOHNNIE'S GULF SERVICE**  
*"We Specialize in Lubrication"*  
 SIMONIZING, TIRE SERVICE, WASHING  
 BATTERIES  
 Complete Line of  
**AUTO ACCESSORIES**  
 PHONE 2300  
 5th & CENTER STS. DENNISON, O.

TUBELESS TIRES — GAS — OILS  
 LUBRICATIONS  
 REPAIRING — AUTO ACCESSORIES  
 BATTERIES — BRAKES  
**WALTER E. LIESER INC.**  
 PHONE 42870 DOVER, OHIO  
 WE SERVE YOU BETTER

**AUTOMOBILES**

Toomey S Co 125 E 2nd St Ph 42056  
 Dover, O  
 (See advertisement this page)  
 Weinsz Motor Co 410 N Tuscarawas  
 Ave Ph 4-2121 Dover O

**DODGE PLYMOUTH**



SALES - SERVICE - PARTS  
 DEPENDABLE USED CARS

**DODGE JOB RATED TRUCKS**

D I A L **42056** D I A L

**The S. TOOMEY Co.**  
 125 E. SECOND DOVER

**AWNINGS**

Porter Plumbing & Heating 135 Fifth  
 Drive NW Ph 6-7921 New Phila O

**BABY CHICKS**

Amstutz Hatcheries Main Street Ph  
 141 Sugarcreek O

**BABY CHICKS**

Paulus Earl E RD 4 New Phila Ph  
 Urichsville 62252

**BAKERIES-RETAIL**

LET  
**ABERTH**  
 BE YOUR  
**BAKER**  
 BIRTHDAY CAKES WEDDING CAKES  
**ABERTH'S BAKERY**  
 DOVER-NEW PHILA.-UHRICHVILLE

**KOHL LUMBER & SUPPLY CO.**

MILLWORK BUILDING CONTRACTORS PH 44325  
 GNADENHUTTEN 5CL

MEMBER

THE

F. D. I. C.

**CITIZENS NATIONAL BANK**

PHONE

**BANK -BY-MAIL SERVICE**

**4-2181**  
**NEW PHILADELPHIA**

**ALL TYPES OF LOANS**

*"Uninterrupted Service"*  
 — Since 1872 —

NEW MODERN CONVENIENCES  
**COMPLETE BANKING SERVICE**  
**CHECKING ACCOUNTS SAVINGS TRUST SERVICES**  
**PUBLIC SQUARE NEW PHILADELPHIA, OHIO**

MEMBER FEDERAL DEPOSIT INSURANCE CORPORATION

*"A Friendly Institution"*

**THE PEOPLES BANK & SAVINGS CO.**

PHONE

**4-2437**

117 COURT N. E.

NEW PHILADELPHIA

WATER SYSTEMS PUMPS & SUPPLIES

**MARION HARVEY & CO.**

WELL DRILLING COMMERCIAL PROSPECTING & TESTING STRASBURG PHONE 4291

# THE FIRST NATIONAL BANK

OF DENNISON

*Helping People  
is  
Our Business*

## COMPLETE BANKING SERVICE

Savings Accounts

Checking Accounts

Mortgage Loans

Personal Loans

Business Loans

Safety Deposit Boxes

Travelers Checks

Bank Money Orders

Foreign Remittances

Member Federal Deposit Insurance Corporation

**PHONE 181**

GRANT ST.

DENNISON, OHIO

# THE REEVES BANKING & TRUST CO.



*Complete Banking Service*

- FARM LOANS ● SAVINGS ACCOUNTS ● CHECKING ACCOUNTS
- AUTOMOBILE LOANS ● BANKING BY MAIL ● PERSONAL LOANS
- BUSINESS LOANS ● REAL ESTATE LOANS ● NIGHT DEPOSITORY
- BANK MONEY ORDERS ● TRUST SERVICES

MEMBER FEDERAL DEPOSIT INSURANCE CORPORATION

PHONES  
4-2306

BUDGET LOAN DEPT.

4-2301

232-234 W. 3rd ST.

DOVER, OHIO

Member

F.D.I.C.

# THE UNITED BANK

IN UHRICHVILLE

*" Complete Banking Service "*

**FRIENDLY      COMPETENT**

127 E. THIRD ST.

Phone 777

**BAKERS****"Home Like Cakes"**

FOR  
BIRTHDAYS - WEDDINGS and THAT  
SPECIAL OCCASION

**CAKES**  
MADE TO ORDER

**Delicious Pies**

EARL & FRANCIS LAWRENCE  
OWNERS

COOKIES - ROLLS - BUNS - BREAD

**Pearl Bakery**

219 ALLEN LANE S. E.

PHONES Office 3-5191  
Residence 3-0513

**BANK BY MAIL SERVICE**

Citizens National Bank Public Square  
Ph 4-2181 New Phila, O

National Bank of Dover 301 W 3rd St  
Ph 42104 Dover O

Reeves Banking & Trust Co 232-234 W  
3rd St Ph 4-2306 (Budget Loan Dept  
Ph 4-2301) Dover O

United Bank 127 E 3rd St Ph 777  
Uhrichsville O

**BANKS**

Citizens National Bank Public Square  
Ph 4-2181 New Phila, O

(See advertisement page 5)

First National Bank of Dennison Grant  
St Ph 181 Dennison, O  
(See advertisement page 6)

National Bank of Dover 301 W Third  
St Ph 42104 Dover O

Peoples Bank & Savings Co 117 Court  
NE Ph 4-2437 New Phila, O  
(See advertisement page 5)

Reeves Banking & Trust Co 232-234 W  
3rd St Ph 4-2306 (Budget Loan Dept  
Ph 4-2301) Dover, O  
(See advertisement page 7)

United Bank 127 E 3rd St Ph 777  
Uhrichsville, O  
(See advertisement page 7)

**BARN EQUIPMENT**

Staneart Dewey L & Son N Water St Ext  
Ph 1086 Uhrichsville O

**BATH ROOM FIXTURES**

**L. L. (Ted) MAJOR**  
**PLUMBING & WIRING**  
DEMING PUMPS  
BATH ROOM FIXTURES  
714 STERLING AVE. DOVER, OHIO

**BATTERIES**

\*Delco--Johnnies Gulf Service 5th &  
Center Sts Ph 2300 Dennison O  
Dreher & Son Service RFD 2 Dover O  
Ph Strasburg 5386  
Lieser Walter E Inc 101 Wooster Ave  
Ph 4-2870 Dover O

**BED ROOM FURNITURE**

Andreas "Furntiure Co Sugarcreek O

**BEE SUPPLIES**

Dewey L Staneart & Son N Water St Ext  
Ph 1086 Uhrichsville O

**BOYS WEAR**

Senhauser's 236 Tuscarawas Ave N Ph  
42621 Dover O

**BUILDERS**

McDonald Agency 1103 E High Ave Ph  
4-2588 New Phila O

**BUILDERS HARDWARE**

Bruce Lumber Co 1047 N Tuscarawas  
Ave Ph 4-2336 Dover O

Glass Lumber & Builders Supply 1244  
Fourth St NW Ph 4-2027 & 5-0161  
New Phila O

Kohl Lumber & Supply Co 301 E Main  
St Gnadenhutten, O Ph Uhrichsville  
Exc 44325

Midway Lumber Co Inc 205 S Tuscarawas  
Ave Ph 42975 Dover O

Moomaw Lumber Co Main St Ph 25M  
Sugarcreek O

**KOHL LUMBER & SUPPLY Co.**

MILLWORK BUILDING CONTRACTORS PH 44325  
GNADENHUTTEN

**BUILDERS SUPPLIES**

Bruce Lumber Co 1047 N Tuscarawas  
Ave Ph 4-2336 Dover O  
Glass Lumber & Builders Supplies 1244  
Fourth St NW Ph 4-2027 & 5-0161  
New Phila O

MILLWORK  
BUILDERS  
HARDWARE

**KOHL  
LUMBER & SUPPLY Co.**  
BUILDING CONTRACTORS  
PHONE 4-4325  
301 E. MAIN GNADENHUTTEN

Midway Lumber Co Inc 205 S Tuscarawas  
St Ph 42975 Dover O  
Moomaw Lumber Co Main St Ph 25M  
Sugarcreek O  
Scherer H E & Sons 126 Second St SE  
Ph 4553 Strasburg O

**BULK MILKING EQUIPMENT**

Patterson Elmo RD 3 Ph 2086 W2  
Coshocton O

**BULLDOZING**

Wendling Bros Co 933 N Wooster Ave  
Ph 42581 Dover O

**BUNS**

Pearl Bakery 219 Allen Lane SE Ph ofc  
3-5191 res 3-0513 New Phila O

**CABINET WORK**

Kohl Lumber & Supply Co 301 E Main  
St Gnadenhutten O Ph Uhrichsville  
Exc 44325

**CAKES**

Aberth's Bakery 153 W High Ave Ph  
42609 New Phila O

**CAKES-MADE TO ORDER**

Pearl Bakery 219 Allen Lane SE Ph ofc  
3-5191 res 3-0513 New Phila O

**CAMERAS**

Eiler Record & Appliance 227 W 3rd St  
Ph 6-2841 Dover O

**CAMPING TRAILERS**

Lawrence Trailer Sales E High Rte 250  
opp Airport Ph 64191 New Phila O

**CATTLE BREEDERS**

Rutledge Farms Sixteenth St NE Ph  
5-4354 New Phila O

**CEDAR CHESTS**

\*Lane--Andreas Furniture Co Sugar-  
creek O

**CHAIN SAWS****SCOTT SUPPLY**

358 5th N.W. NEW PHILADELPHIA  
ALL MAKES NEW & USED SAWS  
Phone 6-3511  
OHIO'S MOST COMPLETE  
POWER SAW & SMALL ENGINE SHOP

Staneart Dewey L & Son N Water St Ext  
Ph 1086 Uhrichsville O

**CHECKING ACCOUNTS**

Citizens National Bank Public Square Ph  
4-2181 New Phila O

First National Bank of Dennison Grant  
St Ph 181 Dennison O

National Bank of Dover 301 W Third St  
Ph 42104 Dover O

Peoples Bank & Savings Co 117 Court  
NE Ph 4-2437 New Phila O

Reeves Banking & Trust Co 232-234 W  
3rd St Ph 4-2306 (Budget Loan Dept  
Ph 4-2301) Dover O

United Bank 127 E 3rd St Ph 777  
Uhrichsville O

**CHRISTMAS CLUBS**

Citizens National Bank Public Square  
Ph 4-2181 New Phila O

National Bank of Dover 301 W 3rd St Ph  
42104 Dover O

Peoples Bank & Savings Co 117 Court  
NE Ph 4-2437 New Phila O

Reeves Banking & Trust Co 232-234 W  
3rd St Ph 4-2306 (Budget Loan Dept  
Ph 4-2301) Dover O

United Bank 127 E 3rd St Ph 777  
Uhrichsville O

10CL CHURCHES CATHOLIC

Saint Josephs Rectory 613 N Tuscarawas  
Ph 4-2913 Dover O

CITY PROPERTIES

McDonald Agency 1103 E High Ave Ph  
4-2588 New Phila O

CLOTHING

IN NEW PHILADELPHIA IT'S

**THE SENHAUSER CLOTHING CO.**

ON THE SQUARE SINCE 1854

FOR MENS' CLOTHING  
and FURNISHINGS

PHONE 42081

COMMERCIAL CATTLE PRODUCERS

Rutledge Farms Sixteenth St NE Ph  
5-4354 New Phila O

COMMERCIAL PRINTING

Newcomerstown News 140 Main St Ph  
8-7117 Newcomerstown, O

COMMERCIAL PROSPECTING

Waltz Everett & Co Inc Rte 21N Ph 5283  
Strasburg O

COMMERCIAL PROSPECTING & TESTING

**WELL DRILLING**

**COMMERCIAL**

**PROSPECTING & TESTING**

**WATER SYSTEMS**      **PHONE 4291**      **PUMPS & SUPPLIES**

**MARION HARVEY CO.**

128 SIXTH ST.      STRASBURG

COLLECTION AGENCIES

Central Collection Agency Rm 201  
Hardesty Bldg 201 1/2 N  
Tuscarawas Ph 42931 Dover, O  
(See advertisement this page)

Tuscarawas Collection Agency 157 1/2 N  
Broadway Ph 65922 New Phila O

CREDIT RATINGS      **PROMPT**      CLAIMS ADJUSTED

**COLLECTION SERVICE**

**CENTRAL COLLECTION AGENCY**

Room 201      **PHONE 42931**      Hardesty Bldg.

201 1/2 N. TUSCARAWAS      DOVER

CONCRETE BLOCKS

Bruce Lumber Co 1047 N Tuscarawas  
Ave Ph 4-2336 Dover O

CONTRACTORS-BASEMENTS

Wendling Bros CO 933 N Wooster Ave  
Ph 42581 Dover O

CONTRACTORS-BRIDGE

Wendling Bros Co 933 N Wooster Ave  
Ph 42581 Dover O

CONTRACTORS-BUILDING

Kohl Lumber & Supply Co 301 E Main  
St Ph Uhrichsville Exc 44325  
Gnadenhutten O  
McDonald Agency 1103 E High Ave Ph  
4-2588 New Phila O

CONTRACTORS-DITCHING

Burkey Excavating Co RFD 2 Rte 21 Ph  
3-4293 New Phila O  
Wendling Bros Co 933 N Wooster Ave  
Ph 42581 Dover O

CONTRACTORS EQUIPMENT-RENTAL

R-H-R Construction Co 231 1/2 W 3rd  
Ph 4-2748 Dover O

CONTRACTORS-EXCAVATING

Burkey Excavating Co RFD 2 Rte 21  
Ph 3-4293 New Phila O  
Wendling Bros Co 933 N Wooster Ave  
Ph 42581 Dover O

CONTRACTORS-GRADING

Burkey Excavating Co RFD 2 Rte 21 Ph  
3-4293 New Phila O

**KOHL LUMBER & SUPPLY Co.**

MILLWORK BUILDING CONTRACTORS PH 44325  
GNADENHUTTEN

CONTRACTORS-GRADING (Contd)

Wendling Bros Co 933 N Wooster Ave  
Ph 42581 Dover O

CONTRACTORS-GENERAL

Wendling Bros Co 933 N Wooster Ave  
Ph 42581 Dover, O  
(See advertisement this page)

CONTRACTORS-LAND CLEARING

Wendling Bros Co 933 N Wooster Ave  
Ph 42581 Dover O

CONTRACTORS-PIPELINES

R H R Construction Co Ofc 231 1/2 W  
Third Ph N Phila 54191 & Dover  
4-2748  
(See advertisement this page)

CONTRACTORS-PIPING

R-H-R Construction Co 231 1/2 W 3rd Ph  
4-2748 Dover O

**R-H-R CONSTRUCTION CO.**

PIPELINE and DITCH DIGGING  
**CONTRACTORS**  
GASOLINE, WATERLINE  
DRAINAGE

WAREHOUSE: Cor. Ray & Tuscarawas, N. Phila.  
**PH. N. PHILA. 54191**  
OFFICE: 231 1/2 W. THIRD  
**PH. DOVER 4-2748**

CONTRACTORS-PLUMBING & HEATING

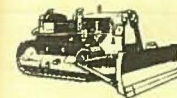
Kraemer-Weber Co 313 N Tuscarawas  
Ave Ph 42884 Dover O

CONTRACTORS-ROAD

Wendling Bros Co 933 N Wooster Ave  
Ph 42581 Dover O

CONTRACTORS-SIDING

Home Engineering Co 350 Boulevard Ph  
39904 Dover O



**WENDLING BROTHERS COMPANY**

**GENERAL CONTRACTORS  
DOVER, OHIO**

*"Over 50 years of Service to Tuscarawas County Builders"*

Public, Industrial, and Commercial Building  
Highway and Bridge Construction  
CRANE LIFTS

**EXCAVATING and GRADING**

Phone **42581**

**933 N. WOOSTER AVE.**

**DOVER, OHIO**

WATER SYSTEMS  
PUMPS & SUPPLIES

**MARION HARVEY & CO.**

WELL DRILLING  
COMMERCIAL PROSPECTING & TESTING  
STRASBURG  
PHONE 4291

### ROY SHERER

WARM AIR FURNACES  
LIGHTNING RODS and SLATE

439 W. HIGH AVE. PHONE 6-8883  
NEW PHILADELPHIA, OHIO

#### FURNITURE

Andreas Furniture Co Sugarcreek, O  
(See advertisement this page)

#### FURNITURE STORES

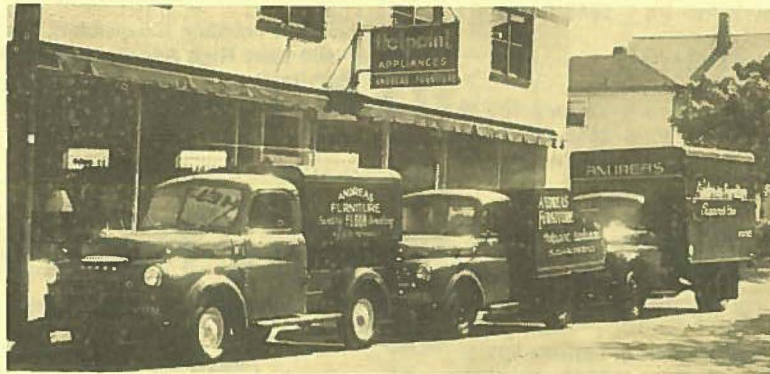
### THE HICKS COMPANY

"Fine Furniture"

PHONE 24

DENNISON

Linn-Hert Co 159 E High Ave Ph  
4-2347 New Phila O  
Wilmar 122 S Wooster Ph 4-2823 Dover  
O



## ANDREAS FURNITURE COMPANY

SUGARCREEK, OHIO

FAMOUS NAMES IN HOME FURNISHINGS

"QUALITY FOR LESS"

OPEN EVENINGS

(CLOSED THURS. NOON)

#### GARAGES

Potschner Fred P 401 N Wooster Ph  
42157 Dover O & Ray & N Broadway  
Ph 42955 New Phila O

#### GARDEN TRACTORS

\*Bolens--Dewey L Stanear & Son N  
Water St Ext Ph 1086 Uhrichsville O

#### GASOLINE ENGINES

\*Clinton-Briggs & Stratton--Scott Supply  
350-5th St NW Ph 6-3511 New Phila O

#### GASOLINE & OILS

\*Gulf--Johnnies Gulf Service 5th &  
Center Sts Ph 2300 Dennison O  
Lieser Walter E Inc 101 Wooster Ave  
Ph 4-2870 Dover O

\*Sinclair--Dreher & Son Service RFD  
2 Dover, O Ph Strasburg 5386

#### GASOLINE & OILS-JOBBERS

\*Shell--Buchanan Independent Oil Co  
400 East High Ave Ph 42505 New  
Phila O

# THE REEVES BANKING & TRUST CO.



### Complete Banking Service

- FARM LOANS
- SAVINGS ACCOUNTS
- CHECKING ACCOUNTS
- AUTOMOBILE LOANS
- BANKING BY MAIL
- BUSINESS LOANS
- PERSONAL LOANS
- REAL ESTATE LOANS
- NIGHT DEPOSITORY
- BANK MONEY ORDERS
- TRUST SERVICES

MEMBER FEDERAL DEPOSIT INSURANCE CORPORATION

PHONES

4-2306

BUDGET LOAN DEPT.

4-2301

232-234 W. 3rd ST.

DOVER, OHIO



**INDIAN VILLAGE  
FEDERAL SAVINGS & LOAN  
ASSOCIATION**

**HOME LOANS  
INSURED SAVINGS**

*" Tuscarawas County's  
most modern Home Financing Institution "*

**GNADENHUTTEN, OHIO**

**PHONE 44313**

**NON CRUSH  
COLLAR PROTECTION**

YOUR BUNDLE  
WASHED  
INDIVIDUALLY  
IN *gentle*

**LUX  
FLARE**

THE  
**TOPS IN**  
LAUNDRY & CLEANING SERVICE

PHONE  
**4-2865**

PHONE  
**4-2865**

Try Our New "VITALIZE" Dry Cleaning  
**DOVER-NEW PHILADELPHIA**

MEMBER



*Laundry & Cleaning Co.*

**BANK ST.**

**DOVER, OHIO**

**KOHL LUMBER & SUPPLY Co.**

MILLWORK BUILDING CONTRACTORS PH 44325 GNADENHUTTEN

17CL

GOVERNMENTAL AGENCIES-STATE

State of Ohio Division of Aid for Aged  
152 N Broadway Ph 42771 New  
Phila O

Schreiner Bros 118 Walnut St Ph 44161  
Gnadenhutten O  
Yockey's Hardware Walnut St Ph 4-4217  
Gnadenhutten O

GOVERNMENTAL OFFICES-CITY

City of Uhrichsville 219 N Main St Ph  
1 Uhrichsville O

HATCHERIES

Amstutz Hatcheries Main St Ph  
141 Sugarcreek, O  
(See advertisement this page)

GOVERNMENTAL OFFICES-COUNTY

County of Tuscarawas County Com-  
missioners County Court House Bldg  
Ph 63573 New Phila O

HEALTH AIDS

\*Klars Health Cookies--Pearl Bakery  
219 Allen Lane SE Ph ofc 3-5191 res  
3-0513 New Phila O

GREENHOUSES

Twin City Greenhouse Inc N Water St  
Ext Ph 380 & 381 Uhrichsville O

HEATING CONTRACTORS

Porter Plumbing & Heating 135 Fifth  
Drive NW Ph 6-7921 New Phila O

HARDWARE

Brown's Western Auto 114 E High Ave  
Ph 42909 New Phila O  
Deardorff Geo B & Son Inc 228 N  
Tuscarawas Ave Ph 4-2083 Dover O  
Rainsberger Hardware & Auto Supply  
302 N Water Ph 768 Uhrichsville O

Sugarcreek Heating & Roofing Co  
Ph Days 91M & Nites 67M  
Sugarcreek, O  
(See advertisement following page)

HEATING-WARM AIR

Holland Furnace Co 164 S Broadway Ph  
4-2705 Dover O

**BABY CHICKS**

U. S. PULLORUM PASSED

**WILBUR MAST  
Manager**

**MAIN ST.  
SUGARCREEK**

**RIGHT  
PRICE  
QUALITY  
SERVICE  
ALWAYS**



**PHONE  
141**

*Amstutz Hatcheries*  
U. S. CERTIFIED AND U. S. APPROVED CHICKS

WATER SYSTEMS  
PUMPS & SUPPLIES

**MARION HARVEY & CO.**

WELL DRILLING  
COMMERCIAL PROSPECTING & TESTING  
STRASBURG  
PHONE 4291

**LENNOX**  
WARM AIR CONDITIONING

**SUGAR CREEK HEATING**  
and  
**ROOFING COMPANY**

ROOFING SPOUTING      DAYS — NITES      AIR CONDITION  
                                 PH. 91 M — 67 M      INSTALLATION

**SUGARCREEK, OHIO**

HI-FI EQUIPMENT

Eiler Record & Appliance 227 W 3rd St  
Ph 6-2841 Dover O

HOME FURNISHINGS

Sears, Roebuck and Co 121 W Third St  
Ph 42020 Dover O

HOME LOANS

Indian Village Federal Savings & Loan  
Ass'n 100 Walnut St (cor Main) Ph  
44313 Gnadenhutten O

HOME PLANNING SERVICE

Bruce Lumber Co 1047 N Tuscarawas  
Ave Ph 4-2336 Dover O  
Glass Lumber & Builders Supply 1244  
Fourth St NW Ph 4-2027 & 5-0161  
New Phila O

HOMES

Lawrence Trailer Sales E High Rte 250  
opp Airport Ph 64191 New Phila O

HOSPITALS

Twin City Hospital Corp N 1st St Ph 75  
Dennison O  
Union Hospital Assoc Iron Ave Ph 42107  
Dover O

HOT WATER HEATERS

Brown's Western Auto 114 E High Ave  
Ph 42909 New Phila O  
Ohio Plumbing & Heating Co E 4th St  
Ext 55611 Dover O

HOUSE PLANS

Kohl Lumber & Supply Co 301 E Main  
St Gnadenhutten O Ph Uhrichsville  
Exc 44325

HOUSE TRAILERS

Lawrence Trailer Sales E High Rte 250  
opp Airport Ph 64191 New Phila O

INSECTICIDES

**Acme Sanitary  
Supply and Window  
Cleaning Co.**

**Headquarters For  
INSECTICIDE & DISINFECTANTS**

PAINTERS SUPPLIES  
WAXES - CLEANERS  
OIL & GREASE ABSORBANTS  
SCHOOL SUPPLIES  
FLOOR MACHINES  
LADDERS  
PAPER PRODUCTS

**PH. 6-1312**

**400 BOULEVARD      DOVER, OHIO**

INSTALLATION

Sugarcreek Heating & Roofing Co Ph  
Day 91M & Nite 67 M Sugarcreek O

INSULATED SIDING

Hurless J W Sr 227 W 8th St Ph 5-7114  
Dover O

INSULATION

Bruce Lumber Co 1047 N Tuscarawas  
Ave Ph 4-2336 Dover O

**KOHL LUMBER & SUPPLY CO.**

MILLWORK BUILDING PH 44325  
CONTRACTORS GNADENHUTTEN

INSULATION (Contd)

**J. W. HURLESS  
INSULATION SERVICE**

BLOWN IN or BATT TYPE for  
OLD or NEW CONSTRUCTION

**227 W. 8TH      PH. 5-7114      DOVER**

INSULATION-CONTRACTORS

\*Fiber Glass-Black Mineral Wool--  
Hurless J W Sr 227 W 8th St Ph  
5-7114 Dover O

INSULATION MATERIALS

Hurless J W Sr 227 W 8th St Ph 5-7114  
Dover O

INSURANCE AGENTS & AGENCIES

FRIENDLY COUNSEL - EFFICIENT SERVICE  
PLUS  
"A GOOD POLICY"

**ALLTON INSURANCE  
CENTER**

**PHONE 5773      STRASBURG**

**AARON R. FUNK & SON**

AUTO - FIRE - BONDS

**INSURANCE  
REALTOR**

FARM & CITY PROPERTIES

**PHONE  
42830**

**NEW PHILADELPHIA, OHIO**

Immell W G Insurance Agency 201½  
N Tuscarawas Ave Ph 42931 Dover

Metzger Real Estate Agency 350 Fair  
Ave NW Ph 42947 New Phila O  
Park Florence K 119 N Wooster Ph  
4435 Strasburg O

Romig Agency 316 East Third St Ph 164  
& 165 Uhrichsville O

**HANHART      AGENCY**  
SINCE 1870

*Insurance*

**DIAL  
4-2387**

**111 WEST 3rd ST.      DOVER, OHIO**

**INSURANCE  
REAL ESTATE**

*McDonald Agency*

**BUILDERS  
of  
FINE HOMES**

PHONE  
**4-2588**

**1103 E. HIGH      N. PHILADELPHIA**

Tuscarawas Agency Co 157 North  
Broadway Ph 42919 New Phila O

Vinton Agency Rm 210 Reeves Bank  
Bldg Ph 4-2495, Res Ph 4-2480  
Dover, O  
(See advertisement following page)

Youngen Insurance Agency Inc 111½ W  
High Ave Ph 42185 New Phila O

INSURANCE-AUTO

Allton Insurance Center 518 S Wooster  
Ave Ph 5773 Strasburg O

Funk Aaron R & Son 120½ N Broadway  
Ph 42830 New Phila O

Hanhart Insurance Agency 111 W 3rd  
St Ph 42387 Dover O

Immell W G Insurance Agency 201½ N  
Tuscarawas Ave Ph 42931 Dover O

McDonald Agency 1103 E High Ave Ph  
4-2588 New Phila O

Park Florence K 119 N Wooster Ph 4435  
Strasburg O

Schreiner Agency Walnut St Ph New  
Phila 42064, Ph 4-4118 Gnadenhutten  
O

Vinton Insurance Agency Rm 210 Reeves  
Bldg Ph ofc 42495 res 42480 Dover O

**22CL**  
LOANS-AUTO

Citizens National Bank Public Square  
Ph 4-2181 New Phila O  
First National Bank of Dennison Grant  
St Ph 181 Dennison O  
Peoples Bank & Savings Co 117 Court  
NE Ph 4-2437 New Phila O  
Reeves Banking & Trust Co 232-234 W  
3rd St Ph 4-2306 (Budget Loan Dept  
Ph 4-2301) Dover O  
United Bank 127 E 3rd St Ph 777  
Uhrichsville O

LOANS-BUSINESS

First National Bank of Dennison Grant  
St Ph 181 Dennison O

LOANS-CHATTEL

Citizens National Bank Public Square Ph  
4-2181 New Phila O

Peoples Bank & Savings Co 117 Court  
NE Ph 4-2437 New Phila O  
Reeves Banking & Trust Co 232-234 W  
3rd St Ph 4-2306 (Budget Loan Dept  
Ph 4-2301) Dover O  
United Bank 127 E 3rd St Ph 777  
Uhrichsville O

LOANS-CONSTRUCTION

Indian Village Federal Savings & Loan  
Ass'n 100 Walnut St (cor Main) Ph  
44313 Gnadenhutten O

LOANS-FARM EQUIPMENT

First National Bank of Dennison Grant  
St Ph 181 Dennison O

LOANS-HOME

Indian Village Federal Savings & Loan  
Ass'n 100 Walnut St (cor Main) Ph  
44313 Gnadenhutten O  
Strasburg Savings & Loan Co 126 N  
Wooster Ph 5705 Strasburg O

LOANS-IMPROVEMENT

Indian Village Federal Savings & Loan  
Ass'n 100 Walnut St (cor Main) Ph  
44313 Gnadenhutten O

LOANS-PERSONAL

Citizens National Bank Public Square  
Ph 4-2181 New Phila O

First National Bank of Dennison Grant  
St Ph 181 Dennison O  
Peoples Bank & Savings Co 117 Court  
NE Ph 4-2437 New Phila O  
Reeves Banking & Trust Co 232-234 W  
3rd St Ph 4-2306 (Budget Loan Dept  
Ph 4-2301) Dover O  
United Bank 127 E 3rd St Ph 777  
Uhrichsville O

LOANS-REAL ESTATE

Citizens National Bank Public Square  
Ph 4-2181 New Phila O  
First National Bank of Dennison Grant  
St Ph 181 Dennison O  
Reeves Banking & Trust Co 232-234 W  
3rd St Ph 4-2306 (Budget Loan Dept  
Ph 4-2301) Dover O  
United Bank 127 E 3rd St Ph 777  
Uhrichsville O

LOANS-REMODELING

Citizens National Bank Public Square  
Ph 4-2181 New Phila O  
Peoples Bank & Savings Co 117 Court  
NE Ph 4-2437 New Phila O  
Reeves Banking & Trust Co 232-234 W  
3rd St Ph 4-2306 (Budget Loan Dept  
Ph 4-2301) Dover O  
United Bank 127 E 3rd St Ph 777  
Uhrichsville O

LUBRICATION

Moser's Sohio Service 207 N Wooster  
Ave Ph 36782 Dover O

LUBRITORIUMS

Dreher & Son Service RD 2 Dover, O  
Ph Strasburg 5386

LUGGAGE

Senhauser Clothing Co 110-112 S  
Broadway Ph 42081 New Phila O

LUMBER

Bruce Lumber Co 1047 N Tuscarawas  
Ave Ph 4-2336 Dover O  
Glass Lumber & Builders Supply 1244  
Fourth St NW Ph 4-2027 & 5-0161  
New Phila O

Kohl Lumber & Supply Co 301 E Main  
St Ph 44325 Uhrichsville Ext  
Gnadenhutten, O  
(See advertisement following page)

Midway Lumber Co Inc 205 S Tuscarawas  
Ave Ph 42975 Dover O

LUMBER (Contd)MILLWORK  
BUILDERS  
HARDWARE

**KOHL  
LUMBER & SUPPLY Co.**

BUILDING  
CONTRACTORS

PHONE  
4-4325

301 E. MAIN GNADENHUTTEN

*Builders Supplies  
of all kinds*

**MOOMAW  
LUMBER  
COMPANY**

PHONE  
25-M

SUGARCREEK

Scherer H E & Sons 126 Second St SE  
Ph 4553 Strasburg O

MATTRESSES

Andreas Furniture Co Sugarcreek O

MENS & BOYS CLOTHING

Senhauser's 236 N Tuscarawas Ave  
Ph 4-2621 Dover, O  
(See advertisement this page)

MEN'S FURNISHINGS

Senhauser Clothing Co 110-112 S  
Broadway Ph 42081 New Phila O

MENS WEAR

\*Michael-Sterns--Senhauser's 236  
Tuscarawas Ave N Ph 42621 Dover O

MILLWORK

Bruce Lumber Co 1047 N Tuscarawas  
Ave Ph 4-2336 Dover O  
Glass Lumber & Builders Supply 1244  
Fourth St NW Ph 4-2027 & 5-0161  
New Phila O

Kohl Lumber & Supply Co 301 E Main  
St Ph 44325 Uhrichsville Exc  
Gnadenhutten O  
Midway Lumber Co Inc 205 S Tuscarawas  
Ave Ph 42975 Dover O  
Moomaw Lumber Co Main St Ph 25M  
Sugarcreek O

MINE & MILL SUPPLIES

Rapport Joe Co 756 E High St Ph 6-4293  
New Phila O

DOVER **SENHAUSER'S** DOVERCLOTHING AND FURNISHINGS  
FOR MEN AND BOYS

**MICHAELS -STERN CLOTHCRAFT  
SUITS AND TOPCOATS**  
Styled By Doncy

- MCGREGOR SPORTWEAR
- ARROW SHIRTS
- KEN RIDGE SLACKS
- KNOX HATS
- HICKOK BELTS & LEATHER GOODS
- WELDON PAJAMAS
- COMPLETE LINE AUTO-BRAND WORK CLOTHING

**SENHAUSER'S in Dover**

236 N. TUSCARAWAS AVE PH 4-2621




24CL MINERAL & FORMATION TESTING

Marion Harvey & Co 128 Sixth St SW  
Ph 4291 Strasburg O

MOBILE HOMES

Lawrence Trailer Sales E High Rte 250  
opp Airport Ph 64191 New Phila O

MONUMENTS

  
 Look for this Seal  
**MONUMENTS**  
**MACKAY MEMORIALS**  
 PHONE 31802 PHONE  
 1106 E. HIGH NEW PHILA.

MUSICAL INSTRUMENTS

Eiler Record & Appliance 227 W 3rd  
St Ph 6-2841 Dover O

NEWSPAPERS

Democrat Publishing Co 172 N  
Broadway Ph 4-2318 New Phila, O  
(See advertisement this page)  
Newcomerstown News 140 Main St Ph  
8-7117 Newcomerstown, O

NEWSPAPERS-DAILY

Democrat Publishing Co 172 N Broadway  
Ph 4-2318 New Phila O

NURSING HOMES

East Ave Nursing Home 464 E High Ave  
Ph 67722 New Phila O

**TORGLER'S NURSING HOME**  
 AMBULATORY and BED PATIENTS  
 Registered Nurse in Charge  
 Frances Karl, Owner and Supervisor  
**227 W. 6th DOVER PH. 42052**

OFFICE FURNITURE & EQUIPMENT

Tope Book & Office Supply Co 155 N  
Broadway Ph 4-2339 New Phila O

OFFICE SUPPLIES

Tope Book & Office Supply Co 155 N  
Broadway Ph 4-2339 New Phila O

**KOHL LUMBER & SUPPLY Co.** MILLWORK BUILDING CONTRACTORS PH 44325 GNADENHUTTEN

OIL PRODUCTS

Moser's Sohio Service 207 N Wooster  
Ave Ph 36782 Dover O

ORGANIZATIONS

Salvation Army 316 N Tuscarawas Ave  
Ph 6-7833 Dover O

ORGANIZATIONS-CIVIC

Chamber of Commerce of Dover Wentz  
Bldg Ph 6-2213 Dover O  
Chamber of Commerce of New Philadel  
phia 120 First Drive SE Ph 42446  
New Phila O

ORGANIZATIONS-POLITICAL

Democratic Headquarters Court St NE  
Ph 4-2666 New Phila O

OUTBOARD MOTORS

\*Evinrude--Scott Supply 350-5th St NW  
Ph 6-3511 New Phila O

PAINTERS SUPPLIES

Acme Sanitary Supply & Cleaning Co  
400 Boulevard Ph 6-1312 Dover O

PAINTS

Bruce Lumber Co 1047 N Tuscarawas  
Ave Ph 4-2336 Dover O  
Glass Lumber & Builders Supply 1244  
Fourth St NW Ph 4-2027 & 5-0161  
New Phila O  
Kohl Lumber & Supply Co 301 E Main  
St Gnadenhutten O Ph Uhrichsville  
Exc 44325  
Midway Lumber Co Inc 205 S Tuscara  
was Ave Ph 42975 Dover O  
\*Sherwin-Williams--Deardorff Geo B  
& Son Inc 228 N Tuscarawas Ave  
Ph 4-2083 Dover O  
\*Sherwin-Williams--H E Scherer &  
Sons 126 Second St SE Ph 4553  
Strasburg O

PAINTS & VARNISHES

Moomaw Lumber Co Main St Ph 25M  
Sugarcreek O

PARLOR STALLS

Patterson Elmo RD 3 Ph 2086 W2  
Coshocton O

PEST CONTROL

Acme Sanitary Supply & Cleaning Co  
400 Boulevard Ph 6-1312 Dover O

PIES

Aberth's Bakery 153 W High Ave Ph  
42609 New Phila O  
Pearl Bakery 219 Allen Lane SE Ph ofc  
3-5191 res 3-0513 New Phila O

PLUMBERS

**24 HOUR**  
  
 SEPTIC TANKS FAST CLEAN COURTEOUS  
**PLUMBING Service**  
 PHONE  
**5-5611**  
 GUARANTEED WORKMANSHIP  
 Repairing - Alterations - New Construction  
**OHIO PLUMBING and HEATING CO.**  
**WALTER ICKES, PROP.**  
 E. 4th ST. EXT., DOVER, OHIO

PLUMBERS SUPPLIES

Ohio Plumbing & Heating Co E 4th St  
Ext Ph 55611 Dover O

PLUMBING

Deardorff Geo B & Son Inc 228 N  
Tuscarawas Ave Ph 4-2083 Dover O  
Yockey's Hardware Walnut St Ph 4-4217  
Gnadenhutten O

PLUMBING FIXTURES

Ohio Plumbing & Heating Co E 4th St  
Ext Ph 55611 Dover O

IF YOU ARE NOT ALREADY A SUBSCRIBER -----  
PLACE YOUR ORDER TODAY FOR

**THE DAILY TIMES**

NEW PHILADELPHIA, OHIO

**Tuscarawas County's Leading Newspaper**

In addition to complete coverage of local news, The Daily Times offers its readers the facilities of the best features and complete coverage by special leased wire by the International News Service and United Press Wirephoto. The only under metropolitan paper in the United States serving its readers telephoto pictures received directly in the news office on a special transmitter every eight minutes during the day.

When you desire to sell any article or wish to offer or receive any type of service, advertise in the classified columns of The Daily Times.

**Dial 42318 For These Services**

WATER SYSTEMS PUMPS & SUPPLIES MARION HARVEY & CO. COMMERCIAL PROSPECTING & TESTING STRASBURG WELL DRILLING PHONE 4291

26CL PLUMBING FIXTURES & SUPPLIES

Kreamer-Weber Co 313 N Tuscarawas Ave Ph 42884 Dover O

PLUMBING & HEATING

**THE KREAMER-WEBER CO.**

**AIR CONDITIONING**  
**HEATING and**  
**PLUMBING**

313 N. TUSCARAWAS  
**PH. 42884**  
**DOVER**

**PORTER**

**PLUMBING & HEATING**



135 - 5TH DRIVE N.W.  
**NEW PHILA.**  
**6-7921**

PLUMBING-RESIDENTIAL

Major L L (Ted) 714 Sterling Ave Dover

POULTRY SUPPLIES

Amstutz Hatcheries Main St Ph 141 Sugar creek O

POWER LAWN MOWERS

\*Jacobson--Dewey L Staneart & Son N Water St Ext Ph 1086 Uhrichsville O

POWER PRODUCTS

\*Lanson Wisconsin--Scott Supply 350 5th St NW Ph 6-3511 New Phila O

POWER TOOLS

\*Delta--Deardorff Geo B & Son Inc 228 N Tuscarawas Ave Ph 4-2083 Dover O

PRINTING

Tope Book & Office Supply Co 155 N Broadway Ph 4-2339 New Phila O

PROPERTY MANAGEMENT

McDonald Agency 1103 E High Ave Ph 4-2588 New Phila O

PUBLISHERS

Democrat Publishing Co 172 N Broadway Ph 4-2318 New Phila O

PUMPS-DEEP & SHALLOW WELL

Ohio Plumbing & Heating Co E 4th St Ext Ph 55611 Dover O

PUMPS & SUPPLIES

\*Deming--Marion Harvey & Co 128 Sixth St SW Ph 4291 Strasburg O  
Waltz Everett & Co Inc Rte 21 N Ph 5283 Strasburg O

PUMPS-WATER WELLS

\*Deming--L L (Ted) Major 714 Sterling Ave Dover O

RADIO STATIONS

W J E R 210 Boulevard Ph 42126 Dover O

RADIOS

Eiler Record & Appliance 227 W 3rd St Ph 6-2841 Dover O

RADIOS & TELEVISION

\*RCA-Philco-Zenith-Sylvania-Westinghouse--Brown's Western Auto 114 E High Ave Ph 42909 New Phila O  
Sears, Roebuck and Co 121 W Third St Ph 42020 Dover O

RANGES

Brown's Western Auto 114 E High Ave Ph 42909 New Phila O  
\*Hotpoint--Andreas Furniture Co Sugar creek O

RANGES-GAS & ELECTRIC

Eiler Record & Appliance 227 W 3rd St Ph 6-2841 Dover O

**KOHL LUMBER & SUPPLY CO.** MILLWORK BUILDING CONTRACTORS PH 44325 GNADENHUTTEN

REAL ESTATE

Becker Wm A 614 Third St NW Ph 4-2602 New Phila O

**INSURANCE**  
**REAL ESTATE**

*McDonald Agency*

**BUILDERS of FINE HOMES**

PHONE **4-2588**

**1103 E. HIGH N. PHILADELPHIA**

Metzger Real Estate Agency 350 Fair Ave NW Ph 42947 New Phila O

**WALTER R. METZGER**  
**REAL ESTATE BROKER**

**WILLIAM H. RUSSELL**  
**REAL ESTATE SALESMAN**

**AUCTIONEER**

PHONE **1134**

**314 N. WATER UHRICHSVILLE**

REAL ESTATE APPRAISALS

Russell Wm H 314 N Water St Ph 1134 Uhrichsville O

REALTORS

Funk Aaron R & Son 120 1/2 N Broadway Ph 42830 New Phila O

RECORDS

Eiler Record & Appliance 227 W 3rd St Ph 6-2841 Dover O

REFRIGERATORS

\*Hotpoint--Andreas Furniture Co Sugar creek O

REFRIGERATORS & FREEZERS

Brown's Western Auto 114 E High Ave Ph 42909 New Phila O

REGISTERED CATTLE



**Rutledge Farms**

**NEW PHILADELPHIA**  
**PHONE 54354**

REGISTERED CATTLE FOR SALE

Rutledge Farms Sixteenth St NE Ph 5-4354 New Phila O

REGISTERED HEREFORDS

Rutledge Farms Sixteenth St NE Ph 5-4354 New Phila O

ROLLS

Aberth's Bakery 153 W High Ave Ph 42609 New Phila O  
Pearl Bakery 219 Allen Lane SE Ph ofc 3-5191, res 3-0513 New Phila O

ROOFING

\*Ruberoid--Bruce Lumber Co 1047 N Tuscarawas Ave Ph 4-2336 Dover O

ROOFING CONTRACTORS

Sugarcreek Heating & Roofing Co Ph Day 91M & Nite 67M Sugarcreek O

ROOFING-SHEET METAL

Sherer Roy Heating Co 439 West High Ave Ph 6-8883 New Phila O

ROOFING & SIDING

Glass Lumber & Builders Supply 1244 Fourth St NW Ph 4-2027 & 5-0161 New Phila O

WATER SYSTEMS PUMPS & SUPPLIES **MARION HARVEY & CO.** COMMERCIAL PROSPECTING & TESTING WELL DRILLING PHONE **4291** STRASBURG

28CL ROOFING & SIDING (Contd)

Kohl Lumber & Supply Co 301 E Main St  
Ph Uhrichsville Exc 44325  
Gnadenhutten O  
Midway Lumber Co Inc 205 S Tuscarawas St Ph 42975 Dover O

RUG CLEANING

Puritan Laundry & Dry Cleaning 243  
Sixth St SW Ph 4-2368 New Phila &  
206 Grant St Ph 530 Dennison O

SAFE DEPOSIT BOXES

Citizens National Bank Public Square  
Ph 4-2181 New Phila O  
First National Bank of Dennison Grant  
St Ph 181 Dennison O  
National Bank of Dover 301 W Third St  
Ph 42104 Dover O  
Reeves Banking & Trust Co 232-234 W  
3rd St Ph 4-2306 (Budget Loan Dept  
4-2301) Dover O  
United Bank 127 E 3rd St Ph 777  
Uhrichsville O

SALES

Toomey S Co 125 E 2nd St Ph 42056  
Dover O

SAVINGS ACCOUNTS

Citizens National Bank Public Square  
Ph 4-2181 New Phila O  
First National Bank of Dennison Grant  
St Ph 181 Dennison O  
Indian Village Federal Savings & Loan  
Ass'n 100 Walnut St (cor Main) Ph  
44313 Gnadenhutten O  
National Bank of Dover 301 W Third St  
Ph 42104 Dover O  
Peoples Bank & Savings Co 117 Court  
NE Ph 4-2437 New Phila O  
Reeves Banking & Trust Co 232-234 W  
3rd St Ph 4-2306 (Budget Loan Dept  
4-2301) Dover O  
Strasburg Savings & Loan Co 126 N  
Wooster Ave Ph 5705 Strasburg O  
United Bank 127 E 3rd St Ph 777  
Uhrichsville O

SAVINGS & LOAN ASSOCIATIONS

Indian Village Federal Savings & Loan  
Ass'n 100 Walnut St (cor Main) Ph  
44313 Gnadenhutten O  
Strasburg Savings & Loan Co 126 N  
Wooster Ave Ph 5705 Strasburg O

SAWS-POWER CHAIN

Scott Supply 350-5th St NW Ph 6-3511  
New Phila O

SCRAP IRON & METALS

Rapport Joe Co 756 E High St Ph 6-4293  
New Phila O

SEED CORN-HYBRID



**KNISELY**  
*High Yield Hybrid Seed*

KNISELY HYBRIDS -- for farmers  
who demand the Very Best!

SEEDS-FIELD

Knisely W R Seed Farm 230-21st St SE  
Ph 6-3943 New Phila O

SEEDS-HYBRID

Knisely W R Seed Farm 230-21st St SE  
Ph 6-3943 New Phila O

SEPTIC TANKS

Ohio Plumbing & Heating Co E 4th St  
Ext Ph 55611 Dover O

SERVICE

Toomey S Co 125 E 2nd St Ph 42056  
Dover O

SERVICE STATIONS

Moser's Sohio Service 307 N Wooster  
Ave Ph 36782 Dover, O  
(See advertisement following page)

SEWER PIPE

Glass Lumber & Builders Supply 1244  
Fourth St NW Ph 4-2027 & 5-0161  
New Phila O  
Kohl Lumber & Supply Co 301 E Main  
St Gnadenhutten O Ph 44325  
Uhrichsville Exc

**KOHL LUMBER & SUPPLY Co.**

MILLWORK BUILDING CONTRACTORS PH 44325 GNADENHUTTEN

Your friendly Sohio Dealer

**MOSER'S SOHIO SERVICE**

207 N. WOOSTER AVE. DOVER, O.

PHONE **36782** AAA SERVICE

AUTOS TRUCKS SERVICED

ATLAS TIRES - BATTERIES  
ACCESSORIES - LUBRICATION  
WASHING - MOTOR TUNE-UP  
CAR POLISHING & WAXING  
GEO. W. MOSER - Prop.

Midway Lumber Co Inc 205 S Tuscarawas Ave Ph 42975 Dover O

SHIRTS

Senhauser's 236 Tuscarawas Ave N Ph  
42621 Dover O

SHOES

\*Florsheim--Senhauser's 236 Tuscarawas Ave N Ph 42621 Dover O

SIDING

Bruce Lumber Co 1047 N Tuscarawas Ave Ph 4-2336 Dover O  
Home Engineering Co 350 Boulevard Ph 39904 Dover O

SPORTING GOODS

Brown's Western Auto 114 E High Ave  
Ph 42909 New Phila O

SPORTS WEAR

\*McGregor--Senhauser's 236 Tuscarawas Ave N Ph 42621 Dover O  
Senhauser Clothing Co 110-112 S Broadway Ph 42081 New Phila O

SPOUTING

Sugarcreek Heating & Roofing Co Ph  
Day 91M & Nite 67M Sugarcreek O

STEEL FABRICATORS

Rapport Joe Co 756 E High St Ph 6-4293  
New Phila O

STEEL-STRUCTURAL

Rapport Joe Co 756 E High St Ph 6-4293  
New Phila O

STORM WINDOWS-ALUMINUM

Home Engineering Co 350 Boulevard  
Ph 39904 Dover O

SUBURBAN PROPERTIES

McDonald Agency 1103 E High Ave Ph  
4-2588 New Phila O

TAPE RECORDERS

Eiler Record & Appliance 227 W 3rd St  
Ph 6-2841 Dover O

TELEVISIONS

Eiler Record & Appliance 227 W 3rd St  
Ph 6-2841 Dover O  
Schreiner Bros 118 Walnut St Ph 44161  
Gnadenhutten O

TIRES

\*Goodyear--Johnnies Gulf Service 5th & Center Sts Ph 2300 Dennison O  
Lieser Walter E Inc 101 Wooster Ave  
Ph 4-2870 Dover O  
Rainsberger Hardware & Auto Supply  
302 N Water Ph 768 Uhrichsville O

TIRES & BATTERIES

Brown's Western Auto 114 E High Ave  
Ph 42909 New Phila O

TOOLS

Bruce Lumber Co 1047 N Tuscarawas  
Ave Ph 4-2336 Dover O

TRAILER SUPPLIES

Lawrence Trailer Sales E High Rte 250  
opp Airport Ph 64191 New Phila O

TRAILERS

Lawrence Trailer Sales E High Rte  
250 opp Airport Ph 6-4191  
New Phila, O  
(See advertisement following page)

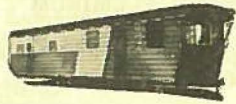
TRUCK PARTS

\*International--Truck Sales & Service  
Inc 1172 Tuscarawas Ave Ph 385  
Dennison, Ph 3-1421 New Phila O

WATER SYSTEMS PUMPS & SUPPLIES  
**MARION HARVEY & CO.** WELL DRILLING COMMERCIAL PROSPECTING & TESTING STRASBURG  
PHONE 4291

# MOBILE HOMES

NEW USED



FOR YOUNG & OLD  
You Can't Beat  
The ECONOMY & COMFORT  
A NEW MODERN MOBILE HOME OFFERS

ADVANCED STYLING - MODERNISTIC DESIGNED  
SPACIOUS LIVING ROOMS  
LUXURIOUSLY FURNISHED  
ALL FURNITURE & APPLIANCES INCLUDED  
1 - 2 - 3 BEDROOMS

LOW DOWN PAYMENT 5 YRS. TO PAY

SEE THE NEW 10' WIDE MODEL

PHONE 6-4191

**Lawrence  
Trailer Sales**

East High Rte 250 opp. Airport New Phila.

## TRUCK REPAIRING

Truck Sales & Service Inc 1172 Tuscarawas Ave Ph 385 Dennison, Ph 3-1421 New Phila O

## TRUCKS

\*Ford--Fred P Potschner 401 N Wooster Ph 42157 Dover O Ray & N Broadway Ph 42955 New Phila O

\*International--Truck Sales & Service Inc 1172 Tuscarawas Ave Ph Dennison 385 Ph 3-1421 New Phila O

Toomey S Co 125 E 2nd St Ph 42056 Dover O

Truck Sales & Service 1172 Tuscarawas Ave Ph 3-1421 New Phila & Stillwater Ave Ph 385 Dennison, O  
(See advertiser this page)

## TRUCKS-USED

Truck Sales & Service Inc 1172 Tuscarawas Ave Ph 385 Dennison Ph 3-1421 New Phila O

## TRUST SERVICE

Citizens National Bank Public Square  
Ph 4-2181 New Phila O

# KOHL LUMBER & SUPPLY CO.

MILLWORK BUILDING CONTRACTORS PH 44325 GNADENHUTTEN

## TRUST SERVICE (Contd)

Reeves Banking & Trust Co 232-234 W 3rd St Ph 4-2306 (Budget Loan Dept Ph 4-2301) Dover O

## TUNE-UP

Moser's Sohio Service 207 N Wooster Ave Ph 36782 Dover O

## TURKEYS

Paulus Earl E RD 4 New Phila Ph Uhrichsville 62252

## USED CARS

Cappel Motors, Inc 207 South Broadway Ph 42726 New Phila O

New Phila-Dover Sales & Service Inc 160-164 S Broadway Ph 4-2406 New Phila O

Potschner Fred P 401 N Wooster Ph 42157 Dover O Ray & N Broadway Ph 42955 New Phila O

(See advertisement this page)

Toomey S Co 125 E 2nd St Ph 42056 Dover O

FOR  
43  
YEARS



*Fred P. Pottschner*

YOUR  
**FORD**  
DEALER

PHONES  
42157 DOVER 42955 N. PHILA.

## VACUUM CLEANERS

\*Hoover--Andreas Furniture Co Sugar-creek O

## WALL COVERINGS

Baumberger Floor & Wall Covering Service 413 N Uhrichsville St Ph 1259 Uhrichsville O

## EILER RECORD and APPLIANCES

YOUR BEST BUY!

# RCA VICTOR

- TELEVISION
- LAUNDRY EQUIPMENT
- RADIOS
- GAS & ELECTRIC RANGES

# RCA WHIRLPOOL

- PHONOGRAPHS
- AIR CONDITIONERS
- RECORDS
- REFRIGERATORS - FREEZERS

# EILER

# RECORD AND APPLIANCE

227 W. 3rd St.

DOVER

PH. 6-2841



## TRUCKS for POWER

PERFORMANCE and ECONOMY



## TRUCK SALES & SERVICE

NEW PHILADELPHIA  
1172 Tuscarawas Ave.

Phone 3-1421

"Complete Repair Shop"

DENNISON  
Stillwater Ave.

Phone 385



# NUMERICAL ROAD INDEX Contd

ROAD NO.	CODE NO.	PAGE NO.	ROAD NO.	CODE NO.	PAGE NO.	ROAD NO.	CODE NO.	PAGE NO.
Road 177	(P-23)	42	Road 266	(N-16)	49	County Road 361	(F-10)	55
Road 180	(M-24)	42	Road 267	(N-16)	49	Road 363	(F-10)	55
Road 183	(N-24)	42	Road 268	(N-16)	49	Road 364	(E-10)	55
Road 185	(M-24)	42	Road 269	(O-19)	49	Road 365	(E-9)	55
Road 186	(M-25)	42	Road 270	(N-19)	50	Road 367	(H-10)	55
Road 187	(L-21)	42	Road 271	(O-20)	50	Road 368	(O-7)	55
Road 189	(F-21)	42	Road 273	(S-16)	50	Road 371	(I-9)	55
Road 191	(E-21)	42	Road 274	(Q-17)	50	Road 374	(K-9)	55
Road 192	(J-20)	42	Road 278	(S-18)	50	Road 378	(L-7)	55
Road 194	(M-19)	42	Road 279	(R-20)	50	Road 379	(M-3)	56
Road 196	(M-19)	43	Road 281	(S-20)	50	Road 380	(O-6)	56
Road 200	(L-19)	43	Road 282	(S-20)	50	Road 383	(L-11)	56
Road 202	(Q-21)	43	Road 283	(P-21)	50	Road 384	(K-11)	56
Road 203	(O-22)	43	Road 287	(T-19)	50	Road 386	(R-6)	56
Road 204	(P-19)	43	County Road 290	(T-21)	51	Road 387	(D-7)	56
Road 206	(F-18)	43	Road 291	(T-20)	51	Road 388	(R-8)	56
Road 207	(K-9)	43	Road 292	(U-21)	51	Road 391	(S-10)	56
Road 208	(K-23)	43	Road 294	(X-22)	51	Road 392	(S-9)	57
Road 209	(I-23)	43	Road 295	(W-19)	51	Road 394	(U-12)	57
Road 211	(J-11)	43	Road 297	(V-17)	51	Road 395	(U-10)	57
State Route 211	(M-13)	43	Road 298	(V-15)	51	Road 398	(W-13)	57
State Route 212	(I-2)	44	Road 299	(V-15)	51	Road 399	(U-8)	57
Road 214	(J-24)	44	Road 301	(U-17)	51	Road 401	(S-4)	57
Road 215	(H-24)	45	Road 302	(V-15)	51	Road 405	(O-3)	57
Road 216	(I-26)	45	Road 306	(O-12)	51	Road 410	(L-6)	57
Road 217	(H-26)	45	Road 307	(V-25)	51	Road 411	(P-4)	57
Road 218	(F-26)	45	Road 309	(T-14)	51	Road 416	(N-5)	57
Road 219	(H-20)	45	Road 311	(R-13)	52	Road 417	(L-5)	57
Road 220	(C-18)	45	Road 312	(P-14)	52	Road 418	(L-7)	57
Road 221	(G-23)	45	Road 313	(Q-12)	52	Road 419	(L-5)	57
Road 222	(V-14)	45	Road 314	(P-10)	52	Road 420	(K-4)	58
Road 223	(H-25)	45	Road 315	(R-9)	52	Road 421	(J-5)	58
Road 224	(G-24)	45	Road 316	(Q-9)	52	Road 422	(J-4)	58
Road 225	(F-22)	45	Road 320	(U-12)	52	Road 424	(K-7)	58
Road 226	(E-18)	45	Road 321	(T-12)	52	Road 425	(J-6)	58
Road 228	(E-21)	45	Road 322	(O-17)	52	Road 426	(J-7)	58
Road 230	(B-20)	45	Road 324	(N-14)	52	Road 428	(H-8)	58
Road 231	(A-19)	45	Road 325	(N-14)	53	Road 429	(G-7)	58
Road 233	(A-18)	46	Road 328	(L-16)	53	Road 432	(H-6)	58
Road 234	(B-17)	46	Road 329	(L-13)	53	Road 433	(I-6)	58
Road 235	(B-17)	46	Road 330	(K-13)	53	Road 434	(I-5)	58
Road 236	(C-16)	46	Road 332	(J-14)	53	Road 436	(G-5)	59
Road 240	(J-23)	46	Road 333	(G-15)	53	Road 438	(H-3)	59
Road 242	(F-18)	46	Road 334	(F-15)	53	Road 442	(E-9)	59
Road 243	(D-18)	46	Road 335	(K-15)	53	Road 443	(C-8)	59
Road 244	(G-19)	46	Road 336	(E-15)	53	Road 444	(C-7)	59
Road 245	(H-19)	46	Road 337	(K-13)	53	Road 446	(F-3)	59
Road 247	(T-20)	46	Road 338	(L-12)	54	Road 447	(G-3)	59
Road 248	(L-21)	46	Road 339	(E-14)	54	Road 452	(P-5)	59
Federal Route 250	(H-3)	46	State Route 342	(T-30)	54	Road 453	(T-4)	59
Road 250	(F-17)	48	Road 343	(E-12)	54	Road 454	(N-23)	59
Road 251	(E-16)	48	Road 344	(Q-16)	54			
Road 255	(I-19)	48	Road 345	(H-12)	54	Road 455	(H-4)	59
Road 256	(H-20)	48	Road 346	(F-13)	54	Road 456	(T-3)	59
Road 257	(H-21)	48	Road 347	(D-12)	54	Road 460	(M-20)	59
State Route 258	(L-31)	48	Road 348	(H-12)	54	Road 461	(P-18)	59
Road 259	(I-21)	49	Road 350	(D-13)	54	Road 462	(O-18)	59
State Route 259	(P-15)	49	Road 351	(C-12)	54	Road 466	(Q-20)	60
Road 260	(I-20)	49	Road 354	(E-9)	54	Road 467	(P-14)	60
Road 261	(K-20)	49	Road 355	(C-11)	55	Road 474	(I-15)	60
Road 262	(J-20)	49	Road 356	(F-11)	55	State Route 516	(F-6)	60
Road 263	(L-18)	49	Road 357	(M-30)	55	Upper Drive	(S-2)	60
Road 264	(L-17)	49	Road 360	(F-11)	55	Hill Top Drive	(S-2)	60

# KOHL LUMBER & SUPPLY CO.

MILLWORK BUILDING CONTRACTORS PH 44325 GNADENHUTTEN

17CL

## GOVERNMENTAL AGENCIES-STATE

State of Ohio Division of Aid for Aged  
152 N Broadway Ph 42771 New Phila O

Schreiner Bros 118 Walnut St Ph 44161 Gnadenuhuten O  
Yockey's Hardware Walnut St Ph 4-4217 Gnadenuhuten O

## GOVERNMENTAL OFFICES-CITY

City of Uhrichsville 219 N Main St Ph 1 Uhrichsville O

## HATCHERIES

Amstutz Hatcheries Main St Ph 141 Sugarcreek, O  
(See advertisement this page)

## GOVERNMENTAL OFFICES-COUNTY

County of Tuscarawas County Commissioners County Court House Bldg Ph 63573 New Phila O

## HEALTH AIDS

\*Klars Health Cookies--Pearl Bakery 219 Allen Lane SE Ph ofc 3-5191 res 3-0513 New Phila O

## GREENHOUSES

Twin City Greenhouse Inc N Water St Ext Ph 380 & 381 Uhrichsville O

## HEATING CONTRACTORS

Porter Plumbing & Heating 135 Fifth Drive NW Ph 6-7921 New Phila O

## HARDWARE

Brown's Western Auto 114 E High Ave Ph 42909 New Phila O

Deardorff Geo B & Son Inc 228 N Tuscarawas Ave Ph 4-2083 Dover O  
Rainsberger Hardware & Auto Supply 302 N Water Ph 768 Uhrichsville O

## HEATING-WARM AIR

Holland Furnace Co 164 S Broadway Ph 4-2705 Dover O

# BABY CHICKS

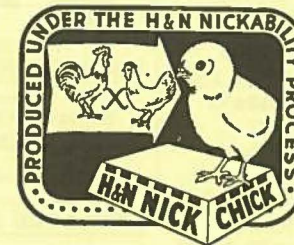
U. S. PULLORUM PASSED

**WILBUR MAST**

Manager

MAIN ST.

SUGARCREEK



RIGHT PRICE QUALITY SERVICE ALWAYS

PHONE

141

*Amstutz Hatcheries*

U.S. CERTIFIED AND U.S. APPROVED CHICKS

WATER SYSTEMS PUMPS & SUPPLIES

MARION HARVEY & CO.

WELL DRILLING COMMERCIAL PROSPECTING & TESTING STRASBURG PHONE 4291

**LENNOX**  
WARM AIR CONDITIONING

**SUGAR CREEK HEATING**  
and  
**ROOFING COMPANY**

ROOFING SPOUTING **DAYS — NITES** AIR CONDITION INSTALLATION  
**PH. 91 M — 67 M**

**SUGARCREEK, OHIO**

HI-FI EQUIPMENT

Eiler Record & Appliance 227 W 3rd St  
Ph 6-2841 Dover O

HOME FURNISHINGS

Sears, Roebuck and Co 121 W Third St  
Ph 42020 Dover O

HOME LOANS

Indian Village Federal Savings & Loan  
Ass'n 100 Walnut St (cor Main) Ph  
44313 Gnadenuhuten O

HOME PLANNING SERVICE

Bruce Lumber Co 1047 N Tuscarawas  
Ave Ph 4-2336 Dover O  
Glass Lumber & Builders Supply 1244  
Fourth St NW Ph 4-2027 & 5-0161  
New Phila O

HOMES

Lawrence Trailer Sales E High Rte 250  
opp Airport Ph 64191 New Phila O

HOSPITALS

Twin City Hospital Corp N 1st St Ph 75  
Dennison O  
Union Hospital Assoc Iron Ave Ph 42107  
Dover O

HOT WATER HEATERS

Brown's Western Auto 114 E High Ave  
Ph 42909 New Phila O  
Ohio Plumbing & Heating Co E 4th St  
Ext 55611 Dover O

HOUSE PLANS

Kohl Lumber & Supply Co 301 E Main  
St Gnadenuhuten O Ph Uhrichsville  
Exc 44325

HOUSE TRAILERS

Lawrence Trailer Sales E High Rte 250  
opp Airport Ph 64191 New Phila O

INSECTICIDES

**Acme Sanitary**  
**Supply and Window**  
**Cleaning Co.**

**Headquarters For**  
**INSECTICIDE & DISINFECTANTS**

PAINTERS SUPPLIES  
WAXES - CLEANERS  
OIL & GREASE ABSORBANTS  
SCHOOL SUPPLIES  
FLOOR MACHINES  
LADDERS  
PAPER PRODUCTS

**PH. 6-1312**

**400 BOULEVARD DOVER, OHIO**

INSTALLATION

Sugarcreek Heating & Roofing Co Ph  
Day 91M & Nite 67 M Sugarcreek O

INSULATED SIDING

Hurless J W Sr 227 W 8th St Ph 5-7114  
Dover O

INSULATION

Bruce Lumber Co 1047 N Tuscarawas  
Ave Ph 4-2336 Dover O

**KOHL LUMBER & SUPPLY CO.**

MILLWORK BUILDING PH 44325  
CONTRACTORS GNADENHUTTEN

INSULATION (Contd)

**J. W. HURLESS**  
**INSULATION SERVICE**

BLOWN IN or BATT TYPE for  
OLD or NEW CONSTRUCTION

**227 W. 8TH PH. 5-7114 DOVER**

INSULATION-CONTRACTORS

\*Fiber Glass-Black Mineral Wool--  
Hurless J W Sr 227 W 8th St Ph  
5-7114 Dover O

INSULATION MATERIALS

Hurless J W Sr 227 W 8th St Ph 5-7114  
Dover O

INSURANCE AGENTS & AGENCIES

FRIENDLY COUNSEL - EFFICIENT SERVICE  
PLUS  
"A GOOD POLICY"

**ALLTON INSURANCE**  
CENTER  
**PHONE 5773 STRASBURG**

**AARON R. FUNK & SON**

AUTO - FIRE - BONDS

**INSURANCE**  
**REALTOR**

FARM & CITY PROPERTIES

PHONE

**42830**

**NEW PHILADELPHIA, OHIO**

Immell W G Insurance Agency 201½  
N Tuscarawas Ave Ph 42931 Dover

Metzger Real Estate Agency 350 Fair  
Ave NW Ph 42947 New Phila O  
Park Florence K 119 N Wooster Ph  
4435 Strasburg O

Romig Agency 316 East Third St Ph 164  
& 165 Uhrichsville O

**HANHART AGENCY**  
SINCE 1870

*Insurance*

**DIAL**  
**4-2387**

**111 WEST 3rd ST. DOVER, OHIO**

**INSURANCE**  
**REAL ESTATE**

*McDonald Agency*

**BUILDERS**  
of  
**FINE HOMES**

PHONE  
**4-2588**

**1103 E. HIGH N. PHILADELPHIA**

Tuscarawas Agency Co 157 North  
Broadway Ph 42919 New Phila O

Vinton Agency Rm 210 Reeves Bank  
Bldg Ph 4-2495, Res Ph 4-2480  
Dover, O  
(See advertisement following page)

Youngen Insurance Agency Inc 111½ W  
High Ave Ph 42185 New Phila O

INSURANCE-AUTO

Allton Insurance Center 518 S Wooster  
Ave Ph 5773 Strasburg O

Funk Aaron R & Son 120½ N Broadway  
Ph 42830 New Phila O

Hanhart Insurance Agency 111 W 3rd  
St Ph 42387 Dover O

Immell W G Insurance Agency 201½ N  
Tuscarawas Ave Ph 42931 Dover O  
McDonald Agency 1103 E High Ave Ph  
4-2588 New Phila O

Park Florence K 119 N Wooster Ph 4435  
Strasburg O

Schreiner Agency Walnut St Ph New  
Phila 42064, Ph 4-4118 Gnadenuhuten  
O

Vinton Insurance Agency Rm 210 Reeves  
Bldg Ph ofc 42495 res 42480 Dover O

*For Any Type*

OF

## INSURANCE

CALL THE

# VINTON AGENCY

*"Oldest in the County"*

PHONE

**4-2495**

**WALTER G. WEINSZ, AGENT**

RESIDENCE  
PHONE  
4-2480

CONVENIENT DOWNTOWN LOCATION

**REEVES BANK BLDG.**

**Room 210**

**DOVER**

### INSURANCE-BONDS

Allton Insurance Center 518 S Wooster Ave Ph 5773 Strasburg O  
Hanhart Insurance Agency 111 W 3rd St Ph 42387 Dover O  
McDonald Agency 1103 E High Ave Ph 4-2588 New Phila O  
Schreiner Agency Walnut St Ph New Phila 42064, Ph 4-4118 Gnadenuhuten O  
Vinton Insurance Agency Rm 210 Reeves Bank Bldg Ph ofc 42495 res 42480 Dover O

### INSURANCE-CASAULTY

Allton Insurance Center 518 S Wooster Ave Ph 5773 Strasburg O  
McDonald Agency 1103 E High Ave Ph 4-2588 New Phila O  
Schreiner Agency Walnut St Ph New Phila 42064, Ph 4-4118 Gnadenuhuten O

### INSURANCE CONSULTANTS

Allton Insurance Center 518 S Wooster Ave Ph 5773 Strasburg O  
Hanhart Insurance Agency 111 W 3rd St Ph 42387 Dover O

McDonald Agency 1103 E High Ave Ph 4-2588 New Phila O  
Vinton Insurance Agency Rm 210 Reeves Bank Bldg Ph ofc 42495 res 42480 Dover O

### INSURANCE-FARM

Allton Insurance Center 518 S Wooster Ave Ph 5773 Strasburg O  
Funk Aaron R & Son 120½ N Broadway Ph 42830 New Phila O  
Hanhart Insurance Agency 111 W 3rd St Ph 42387 Dover O  
McDonald Agency 1103 E High Ave Ph 4-2588 New Phila O  
Schreiner Agency Walnut St Ph New Phila 42064, Ph 4-4118 Gnadenuhuten O  
Vinton Insurance Agency Rm 210 Reeves Bank Bldg Ph ofc 42495 res 42480 Dover O

### INSURANCE-FARM EQUIPMENT

Schreiner Agency Walnut St Ph New Phila 42064, Ph 4-4118 Gnadenuhuten

### INSURANCE- FIRE

Allton Insurance Center 518 S Wooster Ave Ph 5773 Strasburg O  
Funk Aaron R & Son 120½ N Broadway Ph 42830 New Phila O  
Hanhart Insurance Agency 111 W 3rd St Ph 42387 Dover O  
McDonald Agency 1103 E High Ave Ph 4-2588 New Phila O  
Park Florence K 119 N Wooster Ph 4435 Strasburg O  
Vinton Insurance Agency Rm 210 Reeves Bank Bldg Ph ofc 42495 res 42480 Dover O

### INSURANCE-GENERAL

Allton Insurance Center 518 S Wooster Ave Ph 5773 Strasburg O  
Hanhart Insurance Agency 111 West 3rd St Ph 42387 Dover O  
Immel W G Insurance Agency 201½ N Tuscarawas Ave Ph 42931 Dover O  
McDonald Agency 1103 E High Ave Ph 4-2588 New Phila O  
Romig Agency 316 East Third St Ph 164 & 165 Uhrichsville O  
Tuscarawas Agency Co 157 North Broadway Ph 42919 New Phila O  
Vinton Insurance Agency Rm 210 Reeves Bank Bldg Ph ofc 42495 res 42480 Dover O  
Youngen Insurance Agency Inc 111½ W High Ave Ph 42185 New Phila O

# KOHL LUMBER & SUPPLY co.

MILLWORK BUILDING CONTRACTORS PH **44325** GNADENHUTTEN

### INSURANCE-HOUSEHOLD GOODS

Schreiner Agency Walnut St Ph New Phila 42064, Ph 4-4118 Gnadenuhuten O

### INSURANCE-LIABILITY

Allton Insurance Center 518 S Wooster Ave Ph 5773 Strasburg O  
Hanhart Insurance Agency 111 W 3rd St Ph 42387 Dover O  
McDonald Agency 1103 E High Ave Ph 4-2588 New Phila O  
Vinton Insurance Agency Rm 210 Reeves Bank Bldg Ph ofc 42495 res 42480 Dover O

### INSURANCE-LIFE

FRIENDLY COUNSEL - EFFICIENT SERVICE  
PLUS  
"A GOOD POLICY"

## ALLTON INSURANCE

CENTER

PHONE 5773 STRASBURG

Hanhart Insurance Agency 111 W 3rd St Ph 42387 Dover O  
McDonald Agency 1103 E High Ave Ph 4-2588 New Phila O  
Vinton Insurance Agency Rm 210 Reeves Bank Bldg Ph ofc 42495 res 42480 Dover O

### JANITORS SUPPLIES

Acme Sanitary Supply & Cleaning Co  
400 Boulevard Ph 6-1312 Dover O

### JUNK DEALERS

Rapport Joe Co 756 E High St Ph 6-4293 New Phila O

### KITCHEN EQUIPMENT

Deardorff Geo B & Son Inc 228 N Tuscarawas Ave Ph 4-2083 Dover O  
\*Youngstown--Brown's Western Auto  
114 E High Ave Ph 42909 New Phila O

### KITCHENS

Porter Plumbing & Heating 135 Fifth Drive NW Ph 6-7921 New Phila O

### LAMPS

Andreas Furniture Sugarcreek O

### LAUNDRIES

Dover-New Phila Laundry & Cleaning Co 114 Bank St Ph 4-2865 Dover O  
Puritan Laundry & Dry Cleaning 243 Sixth St SW Ph 4-2368 New Phila & 206 Grant St Ph 530 Dennison O

### LAWN MOWERS

\*Jacobson-Johnson-Lawn Boy--Scott Supply 350-5th St NW Ph 6-3511 New Phila O

### LIBRARIES

Dennison Public Library 302 Grant St Ph 2182 Dennison O  
Dover Public Library 531 N Walnut St Ph 42915 Dover O  
Newcomerstown Public Library Main St Ph 8-8228 Newcomerstown O  
New Philadelphia-Tuscarawas County District Library 121 Fair Ave NW Ph 4-2815 New Phila O  
Uhrichsville Public Library 219½ N Main St Ph 754-J Uhrichsville O

### LIFE INSURANCE

## METROPOLITAN

LIFE - ACCIDENT - SICKNESS AND HOSPITALIZATION

Phone 42832

152 N. BROADWAY NEW PHILA

### LIGHTNING RODS

Sherer Roy Heating Co 439 West High Ave Ph 6-8883 New Phila O

### LINOLEUM SALES & SERVICE

Baumberger Floor & Wall Covering Service 413 N Uhrichsville St Ph 1259 Uhrichsville O

### LINOLEUM SUPPLIES

Baumberger Floor & Wall Covering Service 413 N Uhrichsville St Ph 1259 Uhrichsville O

### LIVING ROOM FURNITURE

Andreas Furniture Co Sugarcreek O

### LOANS

National Bank of Dover 301 W Third St Ph 42104 Dover O

WATER SYSTEMS  
PUMPS & SUPPLIES

**MARION HARVEY & CO.**

WELL DRILLING  
COMMERCIAL PROSPECTING & TESTING  
STRASBURG  
PHONE 4291



22CL LOANS-AUTO

Citizens National Bank Public Square  
Ph 4-2181 New Phila O  
First National Bank of Dennison Grant  
St Ph 181 Dennison O  
Peoples Bank & Savings Co 117 Court  
NE Ph 4-2437 New Phila O  
Reeves Banking & Trust Co 232-234 W  
3rd St Ph 4-2306 (Budget Loan Dept  
Ph 4-2301) Dover O  
United Bank 127 E 3rd St Ph 777  
Uhrichsville O

LOANS-BUSINESS

First National Bank of Dennison Grant  
St Ph 181 Dennison O

LOANS-CHATTEL

Citizens National Bank Public Square Ph  
4-2181 New Phila O

Peoples Bank & Savings Co 117 Court  
NE Ph 4-2437 New Phila O  
Reeves Banking & Trust Co 232-234 W  
3rd St Ph 4-2306 (Budget Loan Dept  
Ph 4-2301) Dover O  
United Bank 127 E 3rd St Ph 777  
Uhrichsville O

LOANS-CONSTRUCTION

Indian Village Federal Savings & Loan  
Ass'n 100 Walnut St (cor Main) Ph  
44313 Gnadenhutten O

LOANS-FARM EQUIPMENT

First National Bank of Dennison Grant  
St Ph 181 Dennison O

LOANS-HOME

Indian Village Federal Savings & Loan  
Ass'n 100 Walnut St (cor Main) Ph  
44313 Gnadenhutten O  
Strasburg Savings & Loan Co 126 N  
Wooster Ph 5705 Strasburg O

LOANS-IMPROVEMENT

Indian Village Federal Savings & Loan  
Ass'n 100 Walnut St (cor Main) Ph  
44313 Gnadenhutten O

LOANS-PERSONAL

Citizens National Bank Public Square  
Ph 4-2181 New Phila O

First National Bank of Dennison Grant  
St Ph 181 Dennison O  
Peoples Bank & Savings Co 117 Court  
NE Ph 4-2437 New Phila O  
Reeves Banking & Trust Co 232-234 W  
3rd St Ph 4-2306 (Budget Loan Dept  
Ph 4-2301) Dover O  
United Bank 127 E 3rd St Ph 777  
Uhrichsville O

LOANS-REAL ESTATE

Citizens National Bank Public Square  
Ph 4-2181 New Phila O  
First National Bank of Dennison Grant  
St Ph 181 Dennison O  
Reeves Banking & Trust Co 232-234 W  
3rd St Ph 4-2306 (Budget Loan Dept  
Ph 4-2301) Dover O  
United Bank 127 E 3rd St Ph 777  
Uhrichsville O

LOANS-REMODELING

Citizens National Bank Public Square  
Ph 4-2181 New Phila O  
Peoples Bank & Savings Co 117 Court  
NE Ph 4-2437 New Phila O  
Reeves Banking & Trust Co 232-234 W  
3rd St Ph 4-2306 (Budget Loan Dept  
Ph 4-2301) Dover O  
United Bank 127 E 3rd St Ph 777  
Uhrichsville O

LUBRICATION

Moser's Sohio Service 207 N Wooster  
Ave Ph 36782 Dover O

LUBRITORIUMS

Dreher & Son Service RD 2 Dover, O  
Ph Strasburg 5386

LUGGAGE

Senhauser Clothing Co 110-112 S  
Broadway Ph 42081 New Phila O

LUMBER

Bruce Lumber Co 1047 N Tuscarawas  
Ave Ph 4-2336 Dover O  
Glass Lumber & Builders Supply 1244  
Fourth St NW Ph 4-2027 & 5-0161  
New Phila O

Kohl Lumber & Supply Co 301 E Main  
St Ph 44325 Uhrichsville Ext  
Gnadenhutten, O  
(See advertisement following page)

Midway Lumber Co Inc 205 S Tuscarawas  
Ave Ph 42975 Dover O

**KOHL LUMBER & SUPPLY Co.**

MILLWORK BUILDING CONTRACTORS PH 44325 GNADENHUTTEN

LUMBER (Contd)

**MILLWORK BUILDERS HARDWARE**

**KOHL LUMBER & SUPPLY Co.**  
**BUILDING CONTRACTORS**  
**PHONE 4-4325**  
**301 E. MAIN GNADENHUTTEN**

*Builders Supplies of all kinds*

**MOOMAW LUMBER COMPANY**  
**PHONE 25-M**

**SUGARCREEK**

Scherer H E & Sons 126 Second St SE  
Ph 4553 Strasburg O

MATTRESSES

Andreas Furniture Co Sugarcreek O

MENS & BOYS CLOTHING

Senhauser's 236 N Tuscarawas Ave  
Ph 4-2621 Dover, O  
(See advertisement this page)

MEN'S FURNISHINGS

Senhauser Clothing Co 110-112 S  
Broadway Ph 42081 New Phila O

MENS WEAR

\*Michael-Sterns--Senhauser's 236  
Tuscarawas Ave N Ph 42621 Dover C

MILLWORK

Bruce Lumber Co 1047 N Tuscarawas  
Ave Ph 4-2336 Dover O  
Glass Lumber & Builders Supply 1244  
Fourth St NW Ph 4-2027 & 5-0161  
New Phila O

Kohl Lumber & Supply Co 301 E Main  
St Ph 44325 Uhrichsville Exc  
Gnadenhutten O  
Midway Lumber Co Inc 205 S Tuscarawas  
Ave Ph 42975 Dover O  
Moomaw Lumber Co Main St Ph 25M  
Sugarcreek O

MINE & MILL SUPPLIES

Rapport Joe Co 756 E High St Ph 6-4293  
New Phila O

DOVER **SENHAUSER'S** DOVER

CLOTHING AND FURNISHINGS FOR MEN AND BOYS

**MICHAELS -STERN CLOTHCRAFT SUITS AND TOPCOATS**  
Styled By Doncy

- **McGREGOR SPORTWEAR**
- **ARROW SHIRTS**
- **KEN RIDGE SLACKS**
- **KNOX HATS**
- **HICKOK BELTS & LEATHER GOODS**
- **WELDON PAJAMAS**
- **COMPLETE LINE AUTO-BRAND WORK CLOTHING**

**SENHAUSER'S in Dover**

**236 N. TUSCARAWAS AVE PH 4-2621**

23CL WATER SYSTEMS PUMPS & SUPPLIES **MARION HARVEY & CO.** WELL DRILLING COMMERCIAL PROSPECTING & TESTING STRASBURG PHONE 4291

24CL MINERAL & FORMATION TESTING

Marion Harvey & Co 128 Sixth St SW  
Ph 4291 Strasburg O

MOBILE HOMES

Lawrence Trailer Sales E High Rte 250  
opp Airport Ph 64191 New Phila O

MONUMENTS

**AUTHORIZED DEALER**  
**ROCK OF AGES**

Look for this Seal

**MONUMENTS**

**MACKAY MEMORIALS**

**PHONE 31802 PHONE**

**1106 E. HIGH NEW PHILA.**

MUSICAL INSTRUMENTS

Eiler Record & Appliance 227 W 3rd  
St Ph 6-2841 Dover O

NEWSPAPERS

Democrat Publishing Co 172 N  
Broadway Ph 4-2318 New Phila, O  
(See advertisement this page)  
Newcomerstown News 140 Main St Ph  
8-7117 Newcomerstown, O

NEWSPAPERS-DAILY

Democrat Publishing Co 172 N Broadway  
Ph 4-2318 New Phila O

NURSING HOMES

East Ave Nursing Home 464 E High Ave  
Ph 67722 New Phila O

**TORGLER'S NURSING HOME**

AMBULATORY and BED PATIENTS  
Registered Nurse in Charge

Frances Karl, Owner and Supervisor

**227 W. 6th DOVER PH. 42052**

OFFICE FURNITURE & EQUIPMENT

Tope Book & Office Supply Co 155 N  
Broadway Ph 4-2339 New Phila O

OFFICE SUPPLIES

Tope Book & Office Supply Co 155 N  
Broadway Ph 4-2339 New Phila O

**KOHL LUMBER & SUPPLY CO.**

MILLWORK BUILDING PH **44325**  
CONTRACTORS GNADENHUTTEN

OIL PRODUCTS

Moser's Sohio Service 207 N Wooster  
Ave Ph 36782 Dover O

ORGANIZATIONS

Salvation Army 316 N Tuscarawas Ave  
Ph 6-7833 Dover O

ORGANIZATIONS-CIVIC

Chamber of Commerce of Dover Wentz  
Bldg Ph 6-2213 Dover O  
Chamber of Commerce of New Philadel  
phia 120 First Drive SE Ph 42446  
New Phila O

ORGANIZATIONS-POLITICAL

Democratic Headquarters Court St NE  
Ph 4-2666 New Phila O

OUTBOARD MOTORS

\*Evinrude--Scott Supply 350-5th St NW  
Ph 6-3511 New Phila O

PAINTERS SUPPLIES

Acme Sanitary Supply & Cleaning Co  
400 Boulevard Ph 6-1312 Dover O

PAINTS

Bruce Lumber Co 1047 N Tuscarawas  
Ave Ph 4-2336 Dover O  
Glass Lumber & Builders Supply 1244  
Fourth St NW Ph 4-2027 & 5-0161  
New Phila O  
Kohl Lumber & Supply Co 301 E Main  
St Gnadenhutten O Ph Uhrichsville  
Exc 44325  
Midway Lumber Co Inc 205 S Tuscara  
was Ave Ph 42975 Dover O  
\*Sherwin-Williams--Deardorff Geo B  
& Son Inc 228 N Tuscarawas Ave  
Ph 4-2083 Dover O  
\*Sherwin-Williams--H E Scherer &  
Sons 126 Second St SE Ph 4553  
Strasburg O

PAINTS & VARNISHES

Moomaw Lumber Co Main St Ph 25M  
Sugarcreek O

PARLOR STALLS

Patterson Elmo RD 3 Ph 2086 W2  
Coshocton O

PEST CONTROL

Acme Sanitary Supply & Cleaning Co  
400 Boulevard Ph 6-1312 Dover O

PIES

Aberth's Bakery 153 W High Ave Ph  
42609 New Phila O

Pearl Bakery 219 Allen Lane SE Ph ofc  
3-5191 res 3-0513 New Phila O

PLUMBERS

**24 HOUR**

SEPTIC TANKS FAST CLEAN COURTEOUS

**PLUMBING Service**

PHONE **5-5611**

**GUARANTEED WORKMANSHIP**  
Repairing - Alterations - New Construction

**OHIO PLUMBING and HEATING CO.**

**WALTER ICKES, PROP.**

E. 4th ST. EXT., DOVER, OHIO

PLUMBERS SUPPLIES

Ohio Plumbing & Heating Co E 4th St  
Ext Ph 55611 Dover O

PLUMBING

Deardorff Geo B & Son Inc 228 N  
Tuscarawas Ave Ph 4-2083 Dover O  
Yockey's Hardware Walnut St Ph 4-4217  
Gnadenhutten O

PLUMBING FIXTURES

Ohio Plumbing & Heating Co E 4th St  
Ext Ph 55611 Dover O

WATER SYSTEMS  
PUMPS & SUPPLIES

**MARION HARVEY & CO.**

WELL DRILLING  
COMMERCIAL PROSPECTING & TESTING  
STRASBURG  
PHONE **4291**

IF YOU ARE NOT ALREADY A SUBSCRIBER ----  
PLACE YOUR ORDER TODAY FOR

**THE DAILY TIMES**

NEW PHILADELPHIA, OHIO

**Tuscarawas County's Leading Newspaper**

In addition to complete coverage of local news, The Daily Times offers its readers the facilities of the best features and complete coverage by special leased wire by the International News Service and United Press Wirephoto. The only under metropolitan paper in the United States serving its readers telephoto pictures received directly in the news office on a special transmitter every eight minutes during the day.

When you desire to sell any article or wish to offer or receive any type of service, advertise in the classified columns of The Daily Times.

**Dial 42318 For These Services**

26CL PLUMBING FIXTURES & SUPPLIES

Kreamer-Weber Co 313 N Tuscarawas Ave Ph 42884 Dover O

PLUMBING & HEATING


**THE KREAMER-WEBER CO.**

**AIR CONDITIONING  
HEATING and  
PLUMBING**

313 N. TUSCARAWAS  
**PH. 42884**  
DOVER

**PORTER**

**PLUMBING &  
HEATING**



135 - 5TH  
DRIVE N. W.  
NEW PHILA.  
**6-7921**

PLUMBING-RESIDENTIAL

Major L L (Ted) 714 Sterling Ave Dover

POULTRY SUPPLIES

Amstutz Hatcheries Main St Ph 141 Sugarcreek O

POWER LAWN MOWERS

\*Jacobson--Dewey L Stanart & Son N Water St Ext Ph 1086 Uhrichsville O

POWER PRODUCTS

\*Lanson Wisconsin--Scott Supply 350 5th St NW Ph 6-3511 New Phila O

POWER TOOLS

\*Delta--Deardorff Geo B & Son Inc 228 N Tuscarawas Ave Ph 4-2083 Dover O

PRINTING

Tope Book & Office Supply Co 155 N Broadway Ph 4-2339 New Phila O

PROPERTY MANAGEMENT

McDonald Agency 1103 E High Ave Ph 4-2588 New Phila O

PUBLISHERS

Democrat Publishing Co 172 N Broadway Ph 4-2318 New Phila O

PUMPS-DEEP & SHALLOW WELL

Ohio Plumbing & Heating Co E 4th St Ext Ph 55611 Dover O

PUMPS & SUPPLIES

\*Deming--Marion Harvey & Co 128 Sixth St SW Ph 4291 Strasburg O  
Waltz Everett & Co Inc Rte 21 N Ph 5283 Strasburg O

PUMPS-WATER WELLS

\*Deming--L L (Ted) Major 714 Sterling Ave Dover O

RADIO STATIONS

W J E R 210 Boulevard Ph 42126 Dover O

RADIOS

Eiler Record & Appliance 227 W 3rd St Ph 6-2841 Dover O

RADIOS & TELEVISION

\*RCA-Philco-Zenith-Sylvania-Westinghouse--Brown's Western Auto 114 E High Ave Ph 42909 New Phila O  
Sears, Roebuck and Co 121 W Third St Ph 42020 Dover O

RANGES

Brown's Western Auto 114 E High Ave Ph 42909 New Phila O

\*Hotpoint--Andreas Furniture Co Sugar-creek O

RANGES-GAS & ELECTRIC

Eiler Record & Appliance 227 W 3rd St Ph 6-2841 Dover O

**KOHL LUMBER & SUPPLY Co.**

MILLWORK BUILDING CONTRACTORS PH 44325 GNADENHUTTEN

REAL ESTATE

Becker Wm A 614 Third St NW Ph 4-2602 New Phila O

**INSURANCE  
REAL ESTATE**

*McDonald Agency*

**BUILDERS  
of  
FINE HOMES**

PHONE  
**4-2588**

1103 E. HIGH N. PHILADELPHIA

Metzger Real Estate Agency 350 Fair Ave NW Ph 42947 New Phila O

**WALTER R. METZGER  
REAL ESTATE BROKER**

**WILLIAM H. RUSSELL  
REAL ESTATE SALESMAN**

**AUCTIONEER**

PHONE  
**1134**

314 N. WATER UHRICHSVILLE

REAL ESTATE APPRAISALS

Russell Wm H 314 N Water St Ph 1134 Uhrichsville O

REALTORS

Funk Aaron R & Son 120 1/2 N Broadway Ph 42830 New Phila O

RECORDS

Eiler Record & Appliance 227 W 3rd St Ph 6-2841 Dover O

REFRIGERATORS

\*Hotpoint--Andreas Furniture Co Sugar-creek O

REFRIGERATORS & FREEZERS

Brown's Western Auto 114 E High Ave Ph 42909 New Phila O

REGISTERED CATTLE



**Rutledge Farms**

NEW PHILADELPHIA  
**PHONE 54354**

REGISTERED CATTLE FOR SALE

Rutledge Farms Sixteenth St NE Ph 5-4354 New Phila O

REGISTERED HEREFORDS

Rutledge Farms Sixteenth St NE Ph 5-4354 New Phila O

ROLLS

Aberth's Bakery 153 W High Ave Ph 42609 New Phila O  
Pearl Bakery 219 Allen Lane SE Ph ofc 3-5191, res 3-0513 New Phila O

ROOFING

\*Ruberoid--Bruce Lumber Co 1047 N Tuscarawas Ave Ph 4-2336 Dover O

ROOFING CONTRACTORS

Sugarcreek Heating & Roofing Co Ph Day 91M & Nite 67M Sugarcreek O

ROOFING-SHEET METAL

Sherer Roy Heating Co 439 West High Ave Ph 6-8883 New Phila O

ROOFING & SIDING

Glass Lumber & Builders Supply 1244 Fourth St NW Ph 4-2027 & 5-0161 New Phila O

WATER SYSTEMS  
PUMPS & SUPPLIES

**MARION HARVEY & CO.** COMMERCIAL PROSPECTING & TESTING STRASBURG

WELL DRILLING  
PHONE 4291

28CL ROOFING & SIDING (Contd)

Kohl Lumber & Supply Co 301 E Main St  
Ph Uhrichsville Exc 44325  
Gnadenhutten O  
Midway Lumber Co Inc 205 S Tuscarawas St Ph 42975 Dover O

RUG CLEANING

Puritan Laundry & Dry Cleaning 243  
Sixth St SW Ph 4-2368 New Phila &  
206 Grant St Ph 530 Dennison O

SAFE DEPOSIT BOXES

Citizens National Bank Public Square  
Ph 4-2181 New Phila O  
First National Bank of Dennison Grant  
St Ph 181 Dennison O  
National Bank of Dover 301 W Third St  
Ph 42104 Dover O  
Reeves Banking & Trust Co 232-234 W  
3rd St Ph 4-2306 (Budget Loan Dept  
4-2301) Dover O  
United Bank 127 E 3rd St Ph 777  
Uhrichsville O

SALES

Toomey S Co 125 E 2nd St Ph 42056  
Dover O

SAVINGS ACCOUNTS

Citizens National Bank Public Square  
Ph 4-2181 New Phila O  
First National Bank of Dennison Grant  
St Ph 181 Dennison O  
Indian Village Federal Savings & Loan  
Ass'n 100 Walnut St (cor Main) Ph  
44313 Gnadenhutten O  
National Bank of Dover 301 W Third St  
Ph 42104 Dover O  
Peoples Bank & Savings Co 117 Court  
NE Ph 4-2437 New Phila O  
Reeves Banking & Trust Co 232-234 W  
3rd St Ph 4-2306 (Budget Loan Dept  
4-2301) Dover O  
Strasburg Savings & Loan Co 126 N  
Wooster Ave Ph 5705 Strasburg O  
United Bank 127 E 3rd St Ph 777  
Uhrichsville O

SAVINGS & LOAN ASSOCIATIONS

Indian Village Federal Savings & Loan  
Ass'n 100 Walnut St (cor Main) Ph  
44313 Gnadenhutten O  
Strasburg Savings & Loan Co 126 N  
Wooster Ave Ph 5705 Strasburg O

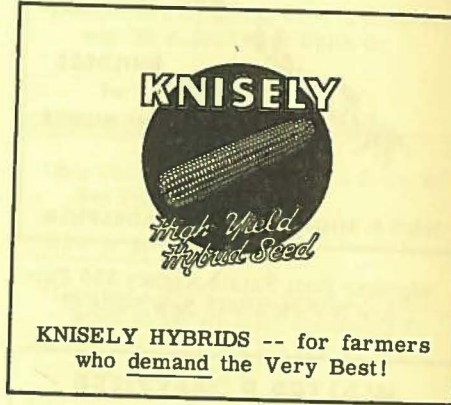
SAWS-POWER CHAIN

Scott Supply 350-5th St NW Ph 6-3511  
New Phila O

SCRAP IRON & METALS

Rapport Joe Co 756 E High St Ph 6-4293  
New Phila O

SEED CORN-HYBRID



**KNISELY**  
*High Yield Hybrid Seed*  
KNISELY HYBRIDS -- for farmers  
who demand the Very Best!

SEEDS-FIELD

Knisely W R Seed Farm 230-21st St SE  
Ph 6-3943 New Phila O

SEEDS-HYBRID

Knisely W R Seed Farm 230-21st St SE  
Ph 6-3943 New Phila O

SEPTIC TANKS

Ohio Plumbing & Heating Co E 4th St  
Ext Ph 55611 Dover O

SERVICE

Toomey S Co 125 E 2nd St Ph 42056  
Dover O

SERVICE STATIONS

Moser's Sohio Service 307 N Wooster  
Ave Ph 36782 Dover, O  
(See advertisement following page)

SEWER PIPE

Glass Lumber & Builders Supply 1244  
Fourth St NW Ph 4-2027 & 5-0161  
New Phila O  
Kohl Lumber & Supply Co 301 E Main  
St Gnadenhutten O Ph 44325  
Uhrichsville Exc

**KOHL LUMBER & SUPPLY CO.**

MILLWORK BUILDING CONTRACTORS PH 44325 GNADENHUTTEN

Your friendly Sohio Dealer

**MOSER'S SOHIO SERVICE**

207 N. WOOSTER AVE. DOVER, O.

PHONE **36782** AAA SERVICE  
AUTOS TRUCKS SERVICED

ATLAS TIRES - BATTERIES  
ACCESSORIES - LUBRICATION  
WASHING - MOTOR TUNE-UP  
CAR POLISHING & WAXING  
GEO. W. MOSER - Prop.

Midway Lumber Co Inc 205 S Tuscarawas Ave Ph 42975 Dover O

SHIRTS

Senhauser's 236 Tuscarawas Ave N Ph 42621 Dover O

SHOES

\*Florsheim--Senhauser's 236 Tuscarawas Ave N Ph 42621 Dover O

SIDING

Bruce Lumber Co 1047 N Tuscarawas Ave Ph 4-2336 Dover O  
Home Engineering Co 350 Boulevard Ph 39904 Dover O

SPORTING GOODS

Brown's Western Auto 114 E High Ave Ph 42909 New Phila O

SPORTS WEAR

\*McGregor--Senhauser's 236 Tuscarawas Ave N Ph 42621 Dover O  
Senhauser Clothing Co 110-112 S Broadway Ph 42081 New Phila O

SPOUTING

Sugarcreek Heating & Roofing Co Ph Day 91M & Nite 67M Sugarcreek O

STEEL FABRICATORS

Rapport Joe Co 756 E High St Ph 6-4293 New Phila O

STEEL-STRUCTURAL

Rapport Joe Co 756 E High St Ph 6-4293 New Phila O

STORM WINDOWS-ALUMINUM

Home Engineering Co 350 Boulevard Ph 39904 Dover O

SUBURBAN PROPERTIES

McDonald Agency 1103 E High Ave Ph 4-2588 New Phila O

TAPE RECORDERS

Eiler Record & Appliance 227 W 3rd St Ph 6-2841 Dover O

TELEVISIONS

Eiler Record & Appliance 227 W 3rd St Ph 6-2841 Dover O  
Schreiner Bros 118 Walnut St Ph 44161 Gnadenhutten O

TIRES

\*Goodyear--Johnnies Gulf Service 5th & Center Sts Ph 2300 Dennison O  
Lieser Walter E Inc 101 Wooster Ave Ph 4-2870 Dover O  
Rainsberger Hardware & Auto Supply 302 N Water Ph 768 Uhrichsville O

TIRES & BATTERIES

Brown's Western Auto 114 E High Ave Ph 42909 New Phila O

TOOLS

Bruce Lumber Co 1047 N Tuscarawas Ave Ph 4-2336 Dover O

TRAILER SUPPLIES

Lawrence Trailer Sales E High Rte 250 opp Airport Ph 64191 New Phila O

TRAILERS

Lawrence Trailer Sales E High Rte 250 opp Airport Ph 6-4191 New Phila, O  
(See advertisement following page)

TRUCK PARTS

\*International--Truck Sales & Service Inc 1172 Tuscarawas Ave Ph 385 Dennison, Ph 3-1421 New Phila O

# MOBILE HOMES

NEW USED



FOR YOUNG & OLD  
You Can't Beat  
The **ECONOMY & COMFORT**  
A NEW MODERN MOBILE HOME OFFERS

ADVANCED STYLING - MODERNISTIC DESIGNED  
SPACIOUS LIVING ROOMS  
LUXURIOUSLY FURNISHED  
ALL FURNITURE & APPLIANCES INCLUDED  
1 - 2 - 3 BEDROOMS

LOW DOWN PAYMENT 5 YRS. TO PAY

SEE THE NEW 10' WIDE MODEL

PHONE 6-4191

**Lawrence  
Trailer Sales**

East High Rte 250 opp. Airport New Phila.

## TRUCK REPAIRING

Truck Sales & Service Inc 1172 Tuscarawas Ave Ph 385 Dennison, Ph 3-1421 New Phila O

## TRUCKS

\*Ford--Fred P Potschner 401 N Wooster Ph 42157 Dover O Ray & N Broadway Ph 42955 New Phila O  
\*International--Truck Sales & Service Inc 1172 Tuscarawas Ave Ph Dennison 385 Ph 3-1421 New Phila O  
Toomey S Co 125 E 2nd St Ph 42056 Dover O

Truck Sales & Service 1172 Tuscarawas Ave Ph 3-1421 New Phila & Stillwater Ave Ph 385 Dennison, O  
(See advertiser this page)

## TRUCKS-USED

Truck Sales & Service Inc 1172 Tuscarawas Ave Ph 385 Dennison Ph 3-1421 New Phila O

## TRUST SERVICE

Citizens National Bank Public Square  
Ph 4-2181 New Phila O

# KOHL LUMBER & SUPPLY Co.

MILLWORK BUILDING CONTRACTORS PH 44325 GNADENHUTTEN

## TRUST SERVICE (Contd)

Reeves Banking & Trust Co 232-234 W 3rd St Ph 4-2306 (Budget Loan Dept Ph 4-2301) Dover O

## TUNE-UP

Moser's Sohio Service 207 N Wooster Ave Ph 36782 Dover O

## TURKEYS

Paulus Earl E RD 4 New Phila Ph Uhrichsville 62252

## USED CARS

Cappel Motors, Inc 207 South Broadway Ph 42726 New Phila O

New Phila-Dover Sales & Service Inc 160-164 S Broadway Ph 4-2406 New Phila O

Potschner Fred P 401 N Wooster Ph 42157 Dover O Ray & N Broadway Ph 42955 New Phila O

(See advertisement this page)

Toomey S Co 125 E 2nd St Ph 42056 Dover O

FOR  
43  
YEARS



YOUR  
**FORD**  
DEALER

PHONES  
42157 DOVER 42955 N. PHILA.

## VACUUM CLEANERS

\*Hoover--Andreas Furniture Co Sugar-creek O

## WALL COVERINGS

Baumberger Floor & Wall Covering Service 413 N Uhrichsville St Ph 1259 Uhrichsville O



## TRUCKS for POWER

PERFORMANCE and ECONOMY



## TRUCK SALES & SERVICE

NEW PHILADELPHIA  
1172 Tuscarawas Ave.

Phone 3-1421

"Complete Repair Shop"

DENNISON  
Stillwater Ave.

Phone 385

## EILER RECORD and APPLIANCES

YOUR BEST BUY!

## RCA VICTOR

- TELEVISION
- RADIO
- LAUNDRY EQUIPMENT
- GAS & ELECTRIC RANGES

## RCA WHIRLPOOL

- PHONOGRAPHS
- RECORDS
- AIR CONDITIONERS
- REFRIGERATORS - FREEZERS

## EILER

RECORD AND  
APPLIANCE

227 W. 3rd St.

DOVER

PH. 6-2841

32CL WALLPAPER

Schreiner Bros 118 Walnut St Ph 44161  
Gnadenhutten O

WASHERS

\*Dexter--Yockey's Hardware Walnut  
St Ph 4-4217 Gnadenhutten O

WASHERS & DRYERS

Brown's Western Auto 114 E High Ave  
Ph 42909 New Phila O

\*Hotpoint-Dexter--Andreas Furniture  
Co Sugarcreek O

WASHING MACHINES

Eiler Record & Appliance 227 W 3rd  
St Ph 6-2841 Dover, O  
(See advertisement preceding page)

WATER HEATERS

\*Hotpoint--Andreas Furniture Co Sugar-  
creek, O

WATER HEATERS-POUR IN &  
PRESSURE TYPE

Patterson Elmo RD 3 Ph 2086 W2  
Coshocton O

WATER SOFTENERS

Culligan Soft Water Service 317 Cross  
St Ph 6-1881 Dover O  
Waltz Everett & Co Inc Rte 21 N Ph  
5283 Strasburg O

WATER SOFTENING EQUIPMENT

Culligan Soft Water Service 317  
Cross St Ph 6-1881 Dover, O  
(See advertisement this page)

WATER SYSTEMS

Culligan Soft Water Service 317 Cross  
St Ph 6-1881 Dover O

\*Deming-Marion Harvey & Co 128  
Sixth St SW Ph 4291 Strasburg O

\*Myers--Marion Harvey & Co 128  
Sixth St SW Ph 4291 Strasburg O

WATER TREATMENT

Culligan Soft Water Service 317 Cross  
St Ph 6-1881 Dover O

WEDDING DESIGNS

Endres Floral Co 635 W High St Ph  
42118 New Phila O

**KOHL LUMBER & SUPPLY CO.**

MILLWORK BUILDING PH 44325  
CONTRACTORS GNADENHUTTEN

WELL DRILLING

**WELL DRILLING  
COMMERCIAL  
PROSPECTING & TESTING**

**WATER SYSTEMS** **PHONE 4291** **PUMPS & SUPPLIES**

**MARION HARVEY CO.**  
128 SIXTH ST. STRASBURG

Waltz Everett & Co Inc. Rte 21  
North Ph 5283 Strasburg  
(See advertisement preceding page)

WINDOW CLEANING

Acme Sanitary Supply & Cleaning Co  
400 Boulevard Ph 6-1312 Dover O

WINDOWS & DOORS-STORM

Glass Lumber & Builders Supply 1244  
Fourth St NW Ph 4-2027 & 5-0161  
New Phila O  
Midway Lumber Co Inc 205 S Tuscar-  
awas Ave Ph 42975 Dover O

WORK CLOTHING

Senhauser's 236 Tuscarawas Ave N Ph  
42621 Dover O

**ADVERTISERS INDEX**

ADVERTISER	PAGE NO.	ADVERTISER	PAGE NO.
-A-		-E-	
Aberth's Bakery	4-CL.	Eiler Record & Appliance	
Acme Sanitary Supply & Cleaning Co	18-CL.	Outside Cover & 31-CL.	
Allton Insurance Center		Endres Floral Co	14-CL.
Outside Cover, 19-CL. & 21-CL.			
Amstutz Hatcheries	17-CL.	-F-	
Andreas Furniture Co		First National Bank of Dennison	6-CL.
Outside Cover & 16-CL.		Flickinger Alvin R, ABS Insert & 2-CL.	
-B-		Funk Aaron R & Son	19-CL.
Brown's Western Auto		-G-	
Inside Rear Cover		Glass Lumber & Builders Supply	
Bruce Lumber Co	Insert	Front Flyleaf	
Burkey Excavating Co	13-CL.	-H-	
-C-		Hanhart Insurance Agency	
Cappel Motors Inc	2-CL.	Outside Cover & 19-CL.	
Cappell's Furriers & Tailors	15-CL.	Harvey Marion & Co	
Central Collection Agency	10-CL.	Repeat Lines Cl. Sec., 10-CL & 33-CL.	
Citizens National Bank		Hicks Co	16-CL.
Outside Cover & 5-CL.		Holland Furnace Co	15-CL.
-D-		Hurless J W Sr	19-CL.
Democrat Publishing Co	24-CL.	-I-	
Dover-New Phila Laundry & Cleaning Co		Indian Village Fed Savings & Loan Ass'n	
Insert		Insert	
Dreher & Son Service	4-CL.		

**WATER  
WELL DRILLING**

**PUMPS**

**Water Softeners  
& Conditioners**

**Pump Repair Service**

**That Satisfies**

**EVERETT WALTZ  
& CO INC.**

*"Since 1900"*

**CORING TEST DRILLING**

**PHONE  
5283**

**ROUTE 21 NORTH STRASBURG**

*Culligan*

SOFT WATER SERVICE



**YOU CAN OWN YOUR OWN**



Cul-matic Softener,  
On a Protected  
Investment Plan



Call Us for Complete  
Information

Culligan Filters Remove Iron,  
Manganese, Hydrogen Sulfide,  
Turbidity, Bad Taste and Odors

\$159.50 up \$2.75 per mo.

CHLORINATORS DEMINERALIZERS NEUTRALIZERS

FREE WATER ANALYSIS

**PHONE  
DOVER 6-1881**

REVERSE CHARGES

**317 CROSS ST.**

**DOVER, OHIO**

WATER SYSTEMS PUMPS & SUPPLIES  
**MARION HARVEY & CO.**  
 COMMERCIAL PROSPECTING & TESTING  
 WELL DRILLING  
 PHONE 4291  
 STRASBURG

# ADVERTISERS INDEX Contd

ADVERTISER	PAGE NO.	ADVERTISER	PAGE NO.
-J-		Puritan Laundry & Dry Cleaning	12-CL.
Johnnie's Gulf Service	4-CL.	-R-	
-K-		Rapport Joe Co	Inside Rear Cover
Kaserman Funeral Home		Reeves Banking & Trust Co	Insert & 7-CL.
Outside Cover, 1-CL. & 15-CL.		R H R Construction Co	11-CL.
Knisely W R Seed Farm	28-CL.	Russell William H	2-CL. & 27-CL.
Kohl Lumber & Supply Co		Rutledge Farms Rear Flyleaf & 27-CL.	
Repeat Lines CL. Sec., 9-CL. & 23-CL.		-S-	
Kreamer-Weber Co	26-CL.	Schreiner Agency	
-L-		Inside Front Cover & 2-CL.	
Lawrence Trailer Sales	30-CL.	Scott Supply	9-CL.
Lieser Walter E Inc	4-CL.	Senhauser Clothing Co	10-CL.
-M-		Senhauser's	23-CL.
MacKay Memorials	24-CL.	Sherer Roy Heating Co	16-CL.
Major LL (Ted)	8-CL.	Staneart Dewey L & Son	Inside Front Cover
McDonald Agency		Sugarcreek Heating & Roofing Co	18-CL.
Outside Cover & 19-CL.		-T-	
Metropolitan Life Ins Co	21-CL.	Toomey S Co	4-CL.
Midway Lumber Co Inc	Insert	Torgler's Nursing Home	24-CL.
Moomaw Lumber Co	23-CL.	Truck Sales & Service Inc	30-CL.
Moser's Sohio Service	29-CL.	Twin City Greenhouse Inc	Insert
-N-		-U-	
National Bank of Dover	Insert	United Bank	Outside Cover & 7-CL.
New Phila-Dover Sales & Service Inc		-V-	
Inside Front Cover		Vinton Insurance Agency	
-O-		Outside Cover & 20-CL.	
Ohio Plumbing & Heating Co	25-CL.	-W-	
-P-		Waltz Everett & Co Inc	32-CL.
Patterson Elmo	12-CL.	Weinsz Motor Co	3-CL.
Paulus Earl E	14-CL.	Wendling Bros Co	Front Flyleaf & 11-CL.
Pearl Bakery	8-CL.		
Peoples Bank & Savings Co	5-CL.		
Porter Plumbing & Heating	26-CL.		
Potschner Fred P			
Outside Cover, 3-CL. & 31-CL.			

# NUMERICAL ROAD INDEX

ROAD NO.	CODE NO.	PAGE NO.	ROAD NO.	CODE NO.	PAGE NO.	ROAD NO.	CODE NO.	PAGE NO.
County Road 1	(F-29)	9	Road 48	(T-6)	25	Road 98	(F-22)	36
County Road 2	(H-29)	9	County Road 49	(H-18)	25	County Road 98	(F-6)	36
Road 2	(H-31)	9	County Road 50	(E-16)	25	County Road 99	(J-4)	36
County Road 3	(G-30)	9	Road 50	(U-4)	25	County Road 100	(J-3)	36
Road 3	(H-31)	9	County Road 51	(F-16)	26	Road 100	(F-23)	36
County Road 4	(H-29)	9	Road 52	(C-6)	26	County Road 101	(J-3)	36
Road 4	(J-30)	9	County Road 52	(E-16)	26	Road 102	(E-23)	36
County Road 5	(N-26)	9	County Road 53	(I-19)	26	County Road 102	(N-1)	36
County Road 6	(L-29)	10	County Road 54	(I-13)	26	County Road 103	(N-2)	37
Road 6	(J-31)	10	Road 55	(K-15)	26	County Road 104	(R-2)	37
County Road 7	(L-29)	10	County Road 56	(L-19)	26	Road 104	(F-27)	37
Road 7	(K-31)	10	Road 56	(N-28)	27	County Road 105	(Q-2)	37
County Road 8	(O-27)	10	County Road 57	(L-19)	27	Road 105	(H-27)	37
Road 8	(M-30)	10	Road 57	(P-21)	27	County Road 106	(R-3)	37
State Route 8	(S-2)	10	County Road 58	(M-17)	27	Road 106	(F-29)	37
County Road 9	(R-30)	11	Road 58	(K-2)	27	County Road 107	(S-2)	37
Road 9	(G-28)	11	County Road 59	(L-19)	27	Road 107	(F-30)	38
County Road 10	(O-22)	11	Road 59	(J-3)	27	County Road 108	(S-3)	38
Road 10	(N-30)	12	County Road 60	(P-18)	27	Road 108	(F-29)	38
County Road 11	(S-30)	12	County Road 61	(Q-18)	27	County Road 109	(T-5)	38
Road 11	(N-31)	12	County Road 62	(S-18)	28	Road 109	(S-4)	38
County Road 12	(T-30)	12	Road 62	(G-3)	28	County Road 110	(S-5)	38
Road 12	(G-29)	12	County Road 63	(S-17)	28	County Road 111	(M-3)	38
County Road 13	(P-27)	12	Road 63	(E-3)	28	County Road 112	(V-7)	38
Road 13	(P-31)	12	County Road	(Q-16)	28	Road 112	(I-29)	38
County Road 14	(K-24)	12	County Road 66	(V-14)	28	Road 113	(O-27)	38
County Road 15	(G-28)	12	Road 66	(C-3)	29	Road 114	(N-27)	38
County Road 16	(O-23)	13	County Road 67	(S-3)	29	Road 115	(I-28)	38
Road 16	(S-30)	13	Road 67	(V-14)	29	County Road 116	(R-6)	39
State Route 16	(O-10)	13	County Road 68	(B-19)	29	Road 117	(O-2)	39
County Road 17	(G-22)	14	Road 68	(T-14)	29	Road 118	(K-28)	39
County Road 18	(G-27)	14	County Road 69	(C-5)	29	Road 119	(J-3)	39
Road 18	(S-31)	14	County Road 70	(S-14)	29	Road 120	(J-26)	39
County Road 19	(G-21)	14	County Road 71	(E-12)	29	Road 121	(M-13)	39
County Road 20	(H-26)	14	County Road 72	(D-12)	30	Road 122	(K-24)	39
Federal Route 21	(I-2)	15	County Road 73	(C-11)	30	Road 124	(M-25)	39
County Road 21	(F-27)	16	Road 73	(C-7)	30	Road 126	(L-27)	39
County Road 22	(H-23)	16	County Road 74	(D-12)	30	Road 127	(M-28)	39
County Road 23	(H-24)	17	Road 74	(C-8)	30	Road 128	(M-26)	39
County Road 24	(N-14)	17	County Road 75	(D-4)	30	Road 129	(I-31)	39
County Road 26	(O-23)	17	County Road 77	(C-10)	30	Road 130	(O-28)	39
Road 26	(U-25)	17	Road 75	(H-19)	30	Road 131	(M-25)	39
County Road 27	(P-25)	17	State Route 75	(H-19)	30	Road 131	(N-27)	39
Road 27	(V-25)	17	Road 76	(C-9)	30	Road 132	(M-7)	39
County Road 28	(S-20)	18	County Road 77	(H-11)	31	Road 134	(F-31)	39
County Road 29	(Q-20)	18	County Road 78	(J-6)	31	Road 140	(P-30)	40
County Road 30	(T-21)	18	Road 78	(C-13)	31	Road 141	(P-29)	40
Road 30	(W-22)	19	County Road 79	(H-11)	31	Road 142	(P-28)	40
County Road 31	(I-23)	19	County Road 80	(I-9)	31	Road 143	(Q-29)	40
Road 31	(X-23)	19	Road 80	(C-14)	31	Road 144	(P-27)	40
County Road 32	(Q-23)	19	State Route 80	(S-2)	31	Road 145	(P-29)	40
Road 32	(V-20)	19	County Road 81	(O-5)	32	Road 146	(R-27)	40
County Road 33	(S-25)	19	Road 81	(D-15)	32	Road 147	(R-26)	40
County Road 34	(T-23)	19	County Road 82	(U-4)	32	Road 148	(S-27)	40
County Road 35	(W-14)	19	Road 83	(R-6)	32	Road 149	(T-27)	40
Road 35	(X-18)	20	County Road 84	(Q-9)	33	Road 150	(T-26)	40
County Road 36	(U-20)	20	County Road 85	(P-10)	33	Road 151	(S-27)	40
Federal Route 36 & State Route 16	(G-28)	20	County Road 86	(Q-12)	33	Road 152	(T-28)	40
Road 37	(W-18)	21	Road 86	(A-19)	33	Road 153	(T-28)	40
County Road 38	(T-22)	21	County Road 87	(S-10)	33	Road 154	(R-25)	40
Road 38	(W-13)	21	County Road 88	(T-9)	33	Road 155	(R-26)	40
County Road 39	(R-20)	21	County Road 89	(V-9)	33	Road 156	(Q-21)	40
Road 39	(V-11)	22	Road 89	(A-21)	34	Road 157	(S-25)	41
State Route 39	(C-11)	22	County Road 90	(S-5)	34	Road 158	(O-22)	41
County Road 40	(A-21)	23	County Road 91	(U-12)	34	Road 159	(N-25)	41
County Road 41	(B-20)	24	Road 91	(T-16)	34	Road 161	(C-16)	41
County Road 42	(C-18)	24	County Road 92	(V-11)	34	Road 162	(W-25)	41
Road 42	(W-11)	24	Road 92	(C-21)	34	Road 163	(S-23)	41
County Road 43	(A-20)	24	County Road 93	(V-9)	34	Road 164	(L-8)	41
Road 43	(X-9)	24	Federal Route 93	(A-17)	34	Road 165	(S-25)	41
County Road 44	(D-21)	24	State Route 93	(G-3)	34	Road 166	(S-24)	41
Road 44	(W-8)	24	Road 93	(B-17)	35	Road 167	(U-23)	41
County Road 45	(E-21)	24	Road 94	(C-21)	35	Road 168	(W-23)	41
Road 45	(W-8)	24	County Road 94	(C-7)	35	Road 169	(S-23)	41
County Road 46	(F-12)	24	County Road 95	(C-5)	35	Road 170	(W-24)	42
County Road 47	(D-14)	25	County Road 96	(D-3)	35	Road 171	(T-23)	42
Road 47	(R-6)	25	Road 96	(D-17)	36	Road 172	(S-22)	42
County Road 48	(E-16)	25	County Road 97	(C-4)	36	Road 175	(P-24)	42
			Road 97	(D-19)	36	Road 176	(P-23)	42

# NUMERICAL ROAD INDEX Contd

ROAD NO.	CODE NO.	PAGE NO.	ROAD NO.	CODE NO.	PAGE NO.	ROAD NO.	CODE NO.	PAGE NO.
Road 177	(P-23)	42	Road 266	(N-16)	49	County Road 361	(F-10)	55
Road 180	(M-24)	42	Road 267	(N-16)	49	Road 363	(F-10)	55
Road 183	(N-24)	42	Road 268	(N-16)	49	Road 364	(E-10)	55
Road 185	(M-24)	42	Road 269	(O-19)	49	Road 365	(E-9)	55
Road 186	(M-25)	42	Road 270	(N-19)	50	Road 367	(H-10)	55
Road 187	(L-21)	42	Road 271	(O-20)	50	Road 368	(O-7)	55
Road 189	(F-21)	42	Road 273	(S-16)	50	Road 371	(I-9)	55
Road 189	(E-21)	42	Road 274	(Q-17)	50	Road 374	(K-9)	55
Road 191	(J-20)	42	Road 278	(S-18)	50	Road 378	(L-7)	55
Road 192	(J-19)	42	Road 279	(R-20)	50	Road 379	(M-3)	56
Road 194	(M-19)	42	Road 281	(S-20)	50	Road 380	(O-6)	56
Road 196	(M-19)	43	Road 282	(S-20)	50	Road 383	(L-11)	56
Road 200	(L-19)	43	Road 283	(P-21)	50	Road 384	(K-11)	56
Road 202	(Q-21)	43	Road 287	(T-19)	50	Road 386	(R-6)	56
Road 203	(O-22)	43	County Road 290	(T-21)	51	Road 387	(D-7)	56
Road 204	(P-19)	43	Road 291	(T-20)	51	Road 388	(R-8)	56
Road 206	(F-18)	43	Road 292	(U-21)	51	Road 391	(S-10)	57
Road 207	(K-9)	43	Road 294	(X-22)	51	Road 392	(S-9)	57
Road 208	(K-23)	43	Road 295	(W-19)	51	Road 394	(U-12)	57
Road 209	(I-23)	43	Road 297	(V-17)	51	Road 395	(U-10)	57
Road 211	(J-11)	43	Road 298	(V-15)	51	Road 398	(W-13)	57
State Route 211	(M-13)	43	Road 299	(V-15)	51	Road 399	(U-8)	57
State Route 212	(I-2)	44	Road 301	(U-17)	51	Road 401	(S-4)	57
Road 214	(J-24)	44	Road 302	(V-15)	51	Road 405	(O-3)	57
Road 215	(H-24)	45	Road 306	(O-12)	51	Road 410	(L-6)	57
Road 216	(I-26)	45	Road 307	(V-25)	51	Road 411	(P-4)	57
Road 217	(H-26)	45	Road 309	(T-14)	51	Road 416	(N-5)	57
Road 218	(F-26)	45	Road 311	(R-13)	52	Road 417	(L-5)	57
Road 219	(H-20)	45	Road 312	(P-14)	52	Road 418	(L-7)	57
Road 220	(C-18)	45	Road 313	(Q-12)	52	Road 419	(L-5)	57
Road 221	(G-23)	45				Road 420	(K-4)	58
Road 222	(V-14)	45	Road 314	(P-10)	52	Road 421	(J-5)	58
Road 223	(H-25)	45	Road 315	(R-9)	52	Road 422	(J-4)	58
Road 224	(G-24)	45	Road 316	(Q-9)	52	Road 424	(K-7)	58
Road 225	(F-22)	45	Road 320	(U-12)	52	Road 425	(J-6)	58
Road 226	(E-18)	45	Road 321	(T-12)	52	Road 426	(J-7)	58
Road 228	(E-21)	45	Road 322	(O-17)	52			
Road 230	(B-20)	45	Road 324	(N-14)	52	Road 428	(H-8)	58
Road 231	(A-19)	45	Road 325	(N-14)	53	Road 429	(G-7)	58
Road 233	(A-18)	46	Road 328	(L-16)	53	Road 432	(H-6)	58
Road 234	(B-17)	46	Road 329	(L-13)	53	Road 433	(I-6)	58
Road 235	(B-17)	46	Road 330	(K-13)	53	Road 434	(I-5)	58
Road 236	(C-16)	46	Road 332	(J-14)	53	Road 436	(G-5)	59
Road 240	(J-23)	46	Road 333	(G-15)	53	Road 438	(H-3)	59
Road 242	(F-18)	46	Road 334	(F-15)	53	Road 442	(E-9)	59
Road 243	(D-18)	46	Road 335	(K-15)	53	Road 443	(C-8)	59
Road 244	(G-19)	46	Road 336	(E-15)	53	Road 444	(C-7)	59
Road 245	(H-19)	46	Road 337	(K-13)	53	Road 446	(F-3)	59
Road 247	(T-20)	46	Road 338	(L-12)	54	Road 447	(G-3)	59
Road 248	(L-21)	46	Road 339	(E-14)	54	Road 452	(P-5)	59
Federal Route 250	(H-3)	46	State Route 342	(T-30)	54	Road 453	(T-4)	59
Road 250	(F-17)	48	Road 343	(E-12)	54	Road 454	(N-23)	59
Road 251	(E-16)	48	Road 344	(Q-16)	54			
Road 255	(I-19)	48	Road 345	(H-12)	54	Road 455	(H-4)	59
Road 256	(H-20)	48	Road 346	(F-13)	54	Road 456	(T-3)	59
Road 257	(H-21)	48	Road 347	(D-12)	54	Road 460	(M-20)	59
State Route 258	(L-31)	48	Road 348	(H-12)	54	Road 461	(P-18)	59
Road 259	(I-21)	49	Road 350	(D-13)	54	Road 462	(O-18)	59
State Route 259	(P-15)	49	Road 351	(C-12)	54	Road 466	(Q-20)	60
Road 260	(I-20)	49	Road 354	(E-9)	54	Road 467	(P-14)	60
Road 261	(K-20)	49	Road 355	(C-11)	55	Road 474	(I-15)	60
Road 262	(J-20)	49	Road 356	(F-11)	55	State Route 516	(F-6)	60
Road 263	(L-18)	49	Road 357	(M-30)	55	Upper Drive	(S-2)	60
Road 264	(L-17)	49	Road 360	(F-11)	55	Hill Top Drive	(S-2)	60



# Rutledge Farms

Rf

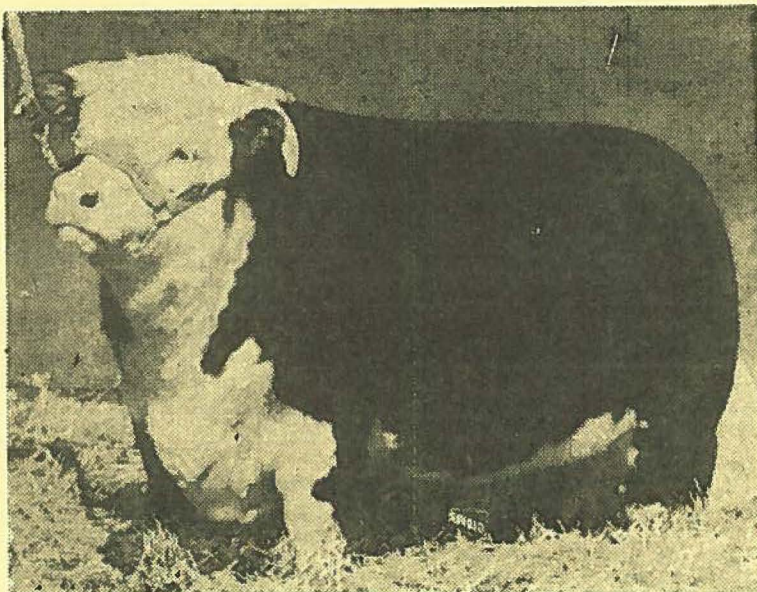
HEREFORDS



R. W. RUTLEDGE & SON and ARNOLD OLSON

PH 5-4354

16th Street N. E. NEW PHILADELPHIA



"HILLCREST LARRY R 77th 800000"

OUR 1953 INTERNATIONAL AND AMERICAN ROYAL CHAMPION  
HERDSIRE MATED TO 40 TOP QUALITY SELECTED COWS OF THE  
MOST POPULAR BLOODLINES.

## ALWAYS SOMETHING FOR SALE

HERDSIRES FOR THE PUREBRED BREEDERS AND COMMERCIAL  
CATTLE PRODUCER ALSO FEMALES FOR BREEDING PURPOSES

COME AND SEE THEM

Farm is located just off Hwys. 250 & 8 at 16th Street East

# BROWN'S WESTERN AUTO

ELECTRIC APPLIANCES

TV - RADIOS - TIRES - BATTERIES

HARDWARE - SPORTING GOODS - AUTO ACCESSORIES

HOTPOINT - WESTINGHOUSE - R.C.A. - ZENITH

PHILCO - SYLVANIA - IRONRITE - TAPPAN

HOOVER - YOUNGSTOWN SINKS - MAYTAG

*" Factory trained Service Dept. for the best in Service "*

OVER 10,000 ITEMS - FOR HOME & CAR

Phones

4-2804

4-2909

114 E. HIGH

## NEW PHILA.

Highest Prices Paid For  
**SCRAP IRON & METALS**

*" Let your Scrap pay for your Repairs "*

## JOE RAPPORT CO.

WE SELL

ANGLE IRON - MINE RAILS - I-BEAMS

BOLTS - SHEET PLATE - STRUCTURAL STEEL

PHONE

**6-4293**

756 E. High St.

New Philadelphia, O.