

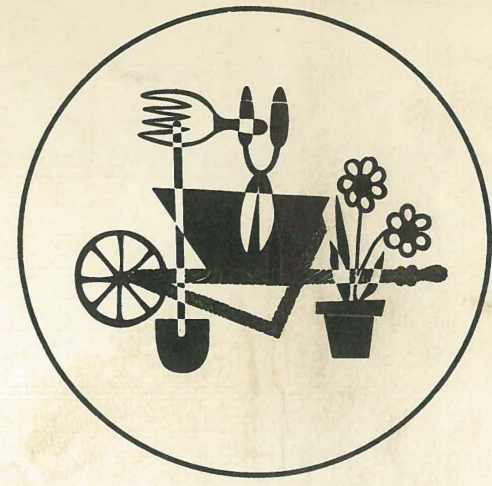
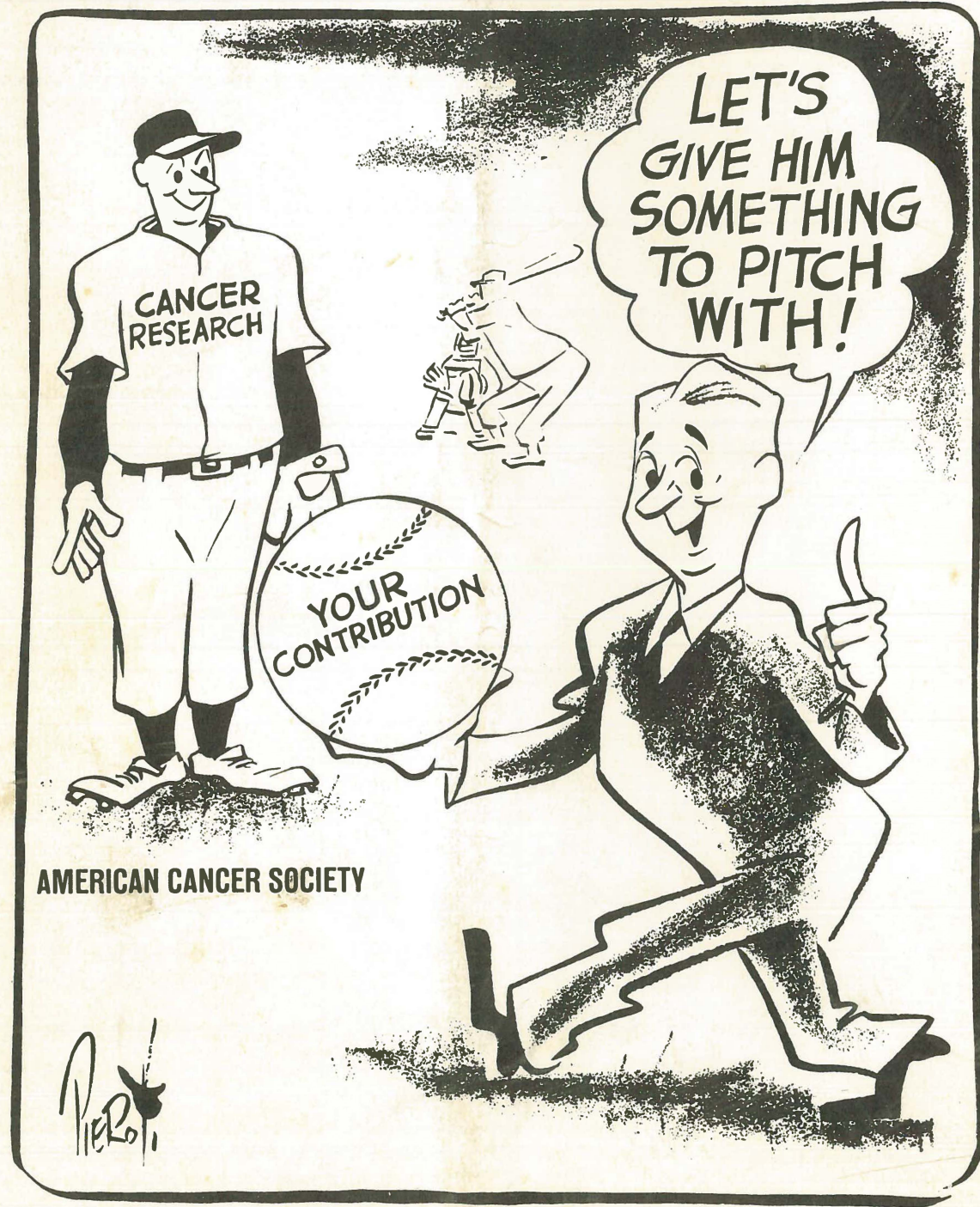
JAMES B. CLOW & SONS, INC.

201-299 N. TALMAN AVE.  
P. O. BOX 6600 A  
CHICAGO 80, ILLINOIS

Gust M. Porcher  
224 N. Third St.  
Coshocton, Ohio

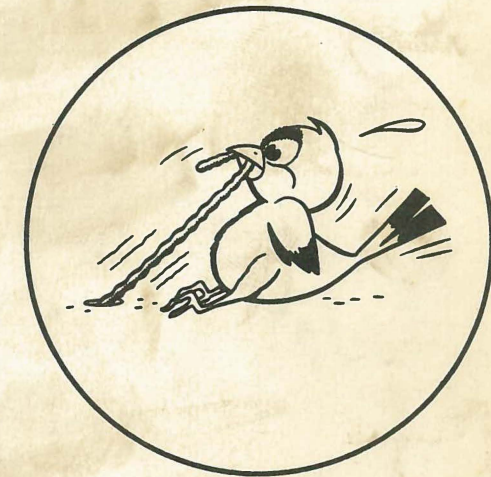
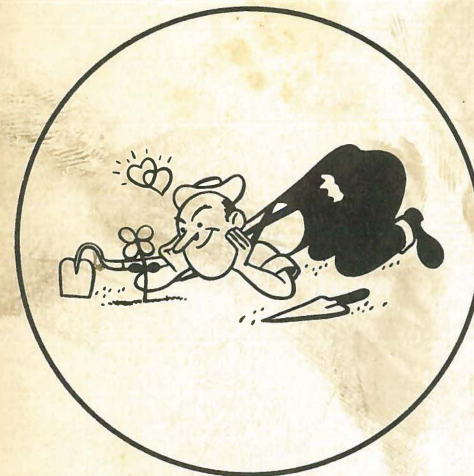
BULK RATE  
U. S. POSTAGE  
**PAID**  
Chicago, Ill.  
Permit No. 7612

Do Not Forward — Return to Sender — Postage Guaranteed



# CLOW NEWS

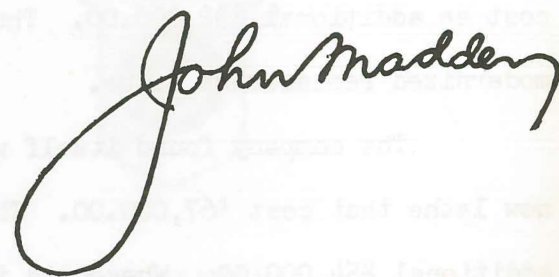
April 1958



It took \$1,250,000.00 worth of sales to enable the company to earn enough profit to pay for the replacement lathe - and not one cent of the profit earned on the million and a quarter sales went to the stockholders who provided the money to start the business in the first place! Looking at it from a slightly different viewpoint - it took a million and a quarter dollars in sales to replace one machine so that three company employees (one a shift) could continue working.

From time to time we all hear misinformed persons or people who have "an ax to grind" complain about so-called "corporation profits." The above illustration, while not taken from the actual records of Clow & Sons, nevertheless it is a true example of what a company like ours must do in order to replace their machines and other items of equipment on which our products are manufactured.

The earning of a satisfactory profit is the most vital requirement of our operations. Whether we do or do not earn a satisfactory profit affects every one of us. Let's all be profit minded throughout 1958.



## SALESMEN'S SECTION

### *Into the stretch . . . .* **SALES** *for 1st Quarter* **CONTEST** *Picks up Speed*



Orders for specialty sales that have been rolling in since January 1st, have special meaning to galloping Clow representatives throughout the various sales territories. Competition for "improvement in percentage of company sales" has been unusually sharp and active.

As the points for competition are computed for the first two months activity, BOB HOLZ, Minneapolis, leads the pack by a nose, as the first quarter contest rounds the two thirds pole. Right on his neck, JOE FOREMAN, Northern Illinois. Also bunched with the leaders, TOM BRUNER, St. Louis; DICK RATCLIFFE, Cleveland; KEITH PORTER, Pittsburg and Texas Ranger HOWARD BECK, Dallas.

By the time this issue is read, sales for the quarter will have closed. We hope that in the next Clow News we can give you the point winners for the total quarter, and are willing to bet that some snappy sales work during March will swing the balance to the hard working winner.

To all you competing thoroughbreds, here's to a fast track, a hard ride, - and a gallant finish!

#### LARGE ORDER FOR ALLAN SCHRAMM

Allan Schramm, recently moved into Little Rock to cover Arkansas, Mississippi and Louisiana, has recently landed one of the largest orders of the year to date. 3200 tons of Bell-Tite pipe, 275 Eddy Fire Hydrants and 300 Iowa Valves were sold to Abbeville, Louisiana. Sales Supervisor Buck Weaver, Birmingham, assisted in this sale with his contacts with the Engineers, J. B. McCreary Company, of Atlanta, Georgia. M & L Construction Company makes this installation.

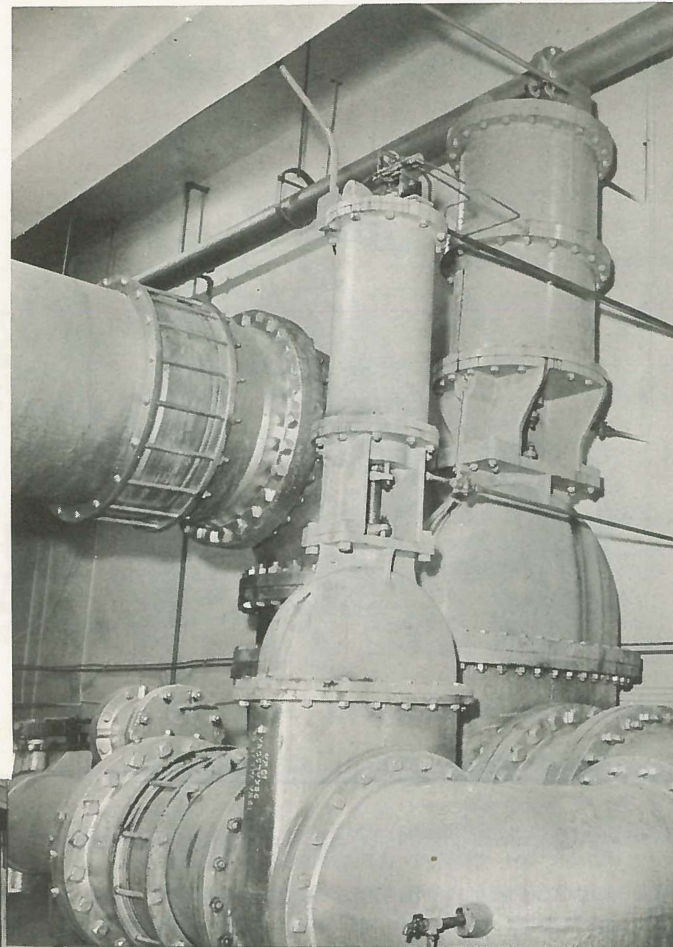
Not often is so fine an order landed with something for Clow, Eddy and Iowa, all at one time. Congratulations! Keep up the fine work.

#### CECIL FORBES LANDS BIG ORDER IN FLORIDA

Cecil Forbes, Clow representative in Jacksonville, has sent in a splendid order for 560 tons of 16" and 10" Bell-Tite pipe for Quincy, Florida. Keep 'em rollin', Cecil.

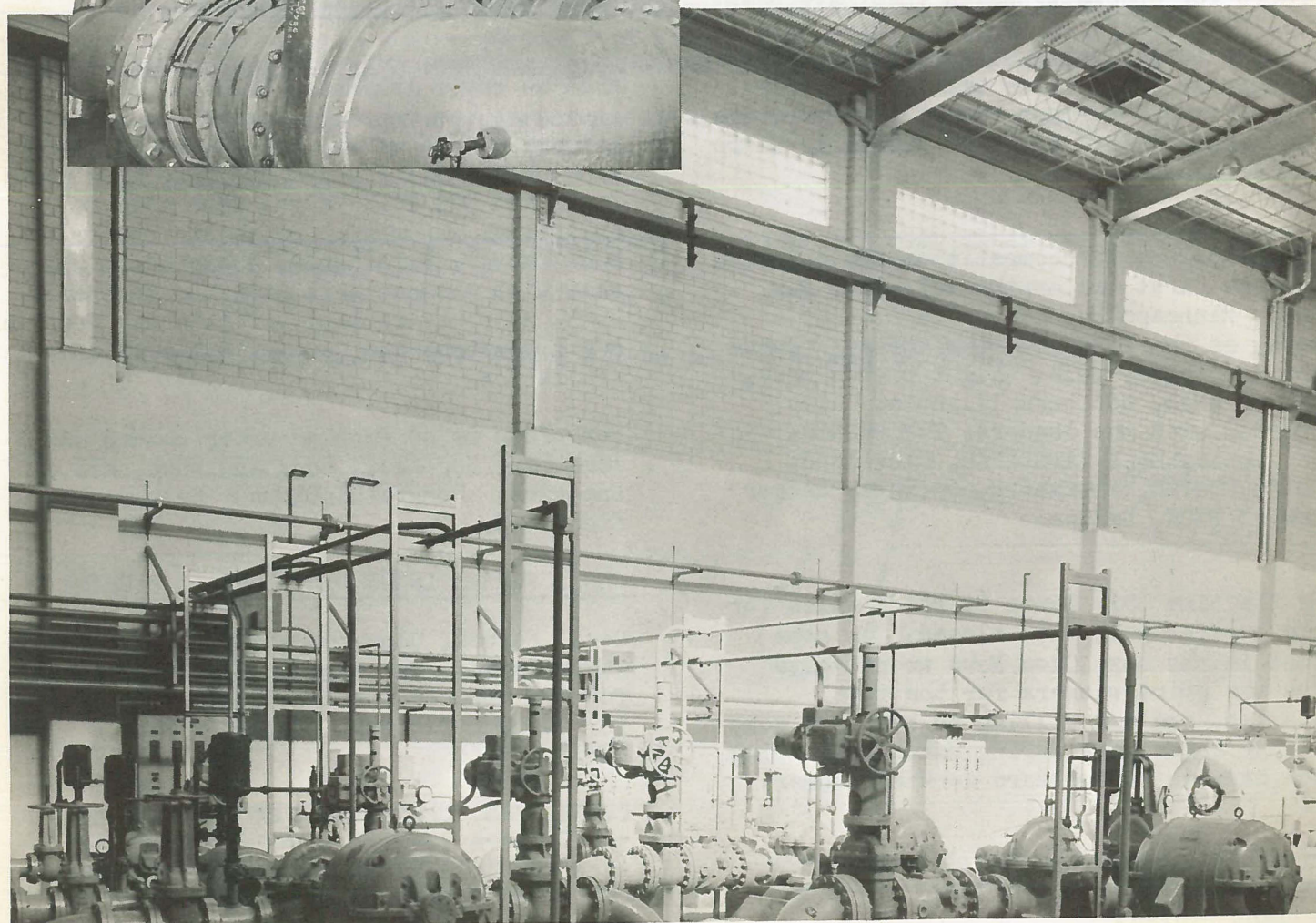
CHUCK DYAS, transferred at year end to the Eastern Pennsylvania Territory, has recently left the employ of the company. CHUCK formerly was assistant to Dick Ratcliffe of our Cleveland Office.

# NORTH TEXAS Depends on



At left: Iowa hydraulic gate valves  
in filter plant gallery.

Below: Iowa motor-operated gate valves  
installed in the main pump  
station of the North Texas  
Municipal Water District.



# MUNICIPAL WATER DISTRICT Iowa Valves.....

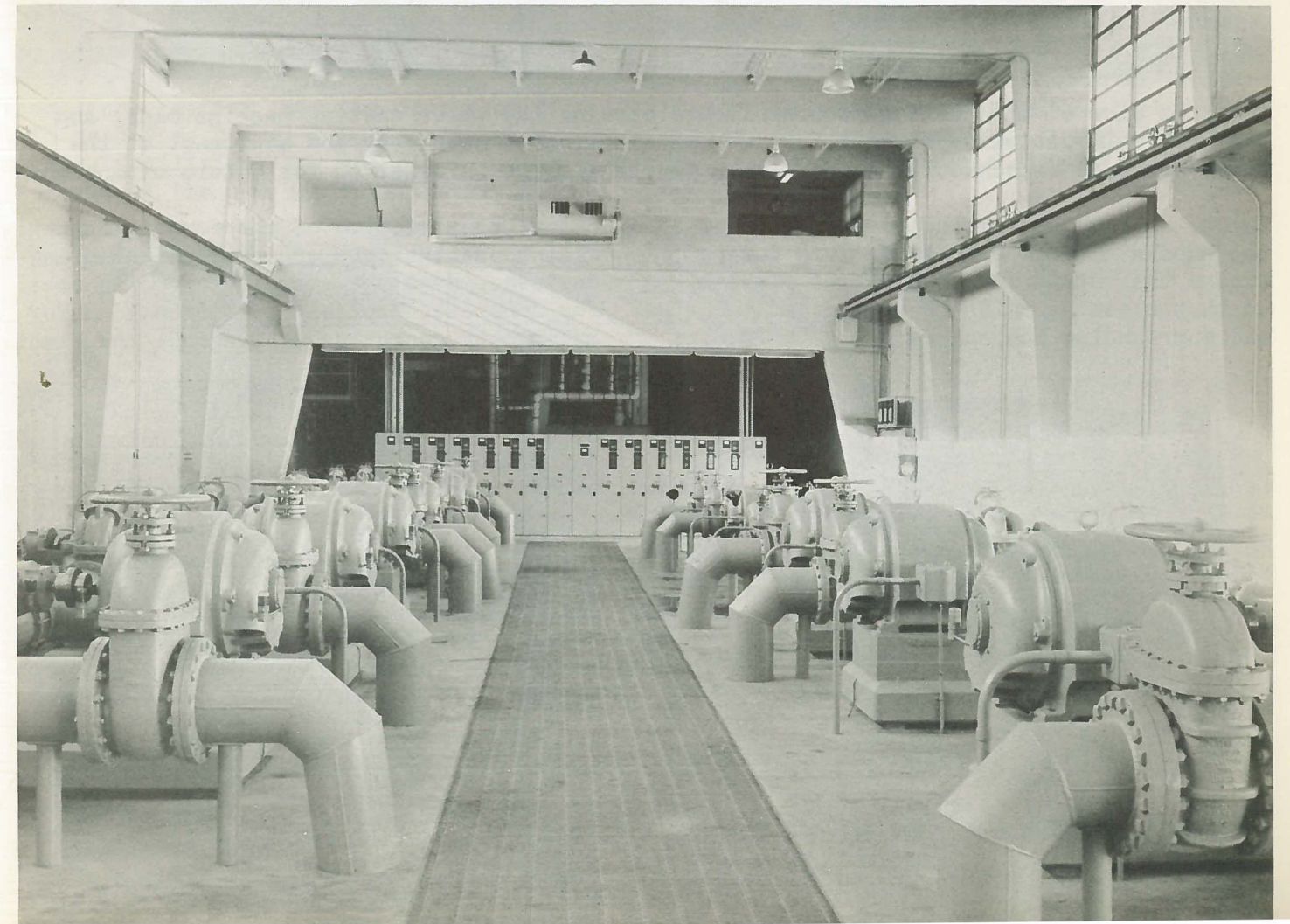
The North Texas Municipal Water District is a common water authority created by its ten member communities who combined their resources to provide a common supply and water treatment facility. In addition to supplying each of the ten member communities, the District, with maximum capacity of 54,000,000 gallons a day, also sells water to the city of Dallas, which is its largest single customer. The District is an outstanding example of the successful combination of municipal resources to solve a basic, common need.

Through the fine representation of HOWARD BECK, Dallas Representative, Iowa Valves are used throughout the construction of the

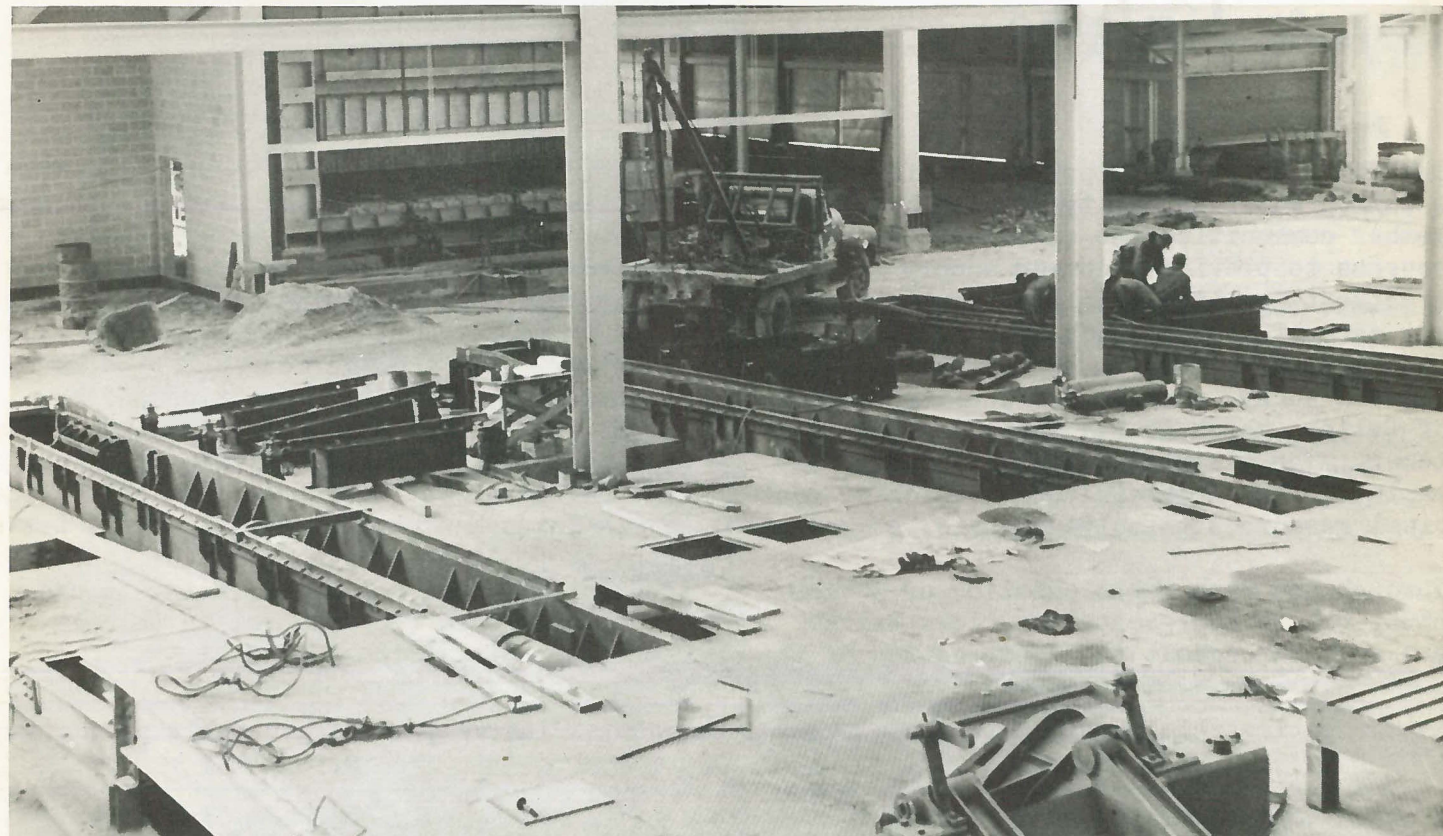
District's High Lift Pumping Station, Filter Plant, and six pumping stations located throughout the district. Many of these valves - 4 through 30-inch diameter - are motor operated, or hydraulically operated.

This April, as the American Water Works Association holds its convention and exhibit in Dallas, many waterworks engineers and operators will likely take a look at the new water facilities constructed by the North Texas Municipal Water District. Let's hope they all note, with approval, the important job Iowa Valves are doing to provide the needed flow control in this important installation.

Below, entire main pumping station. Iowa valves used exclusively throughout this project.

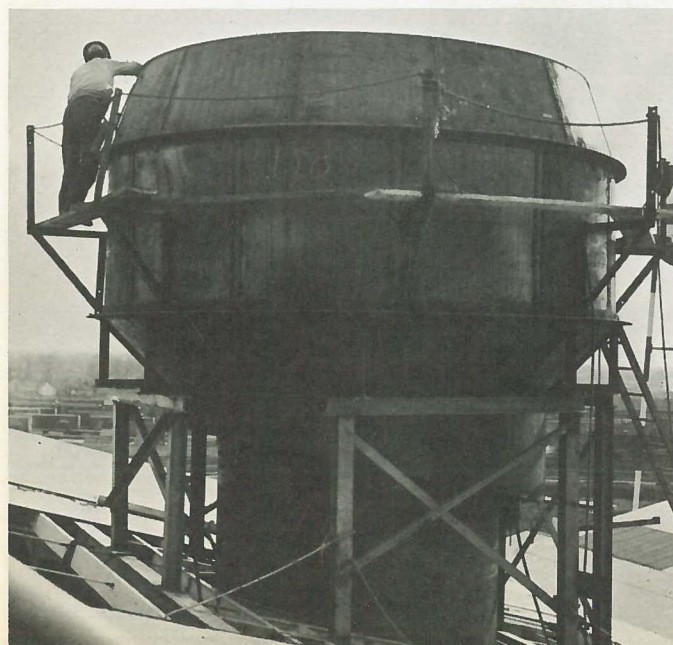


# BENSENVILLE PLANT

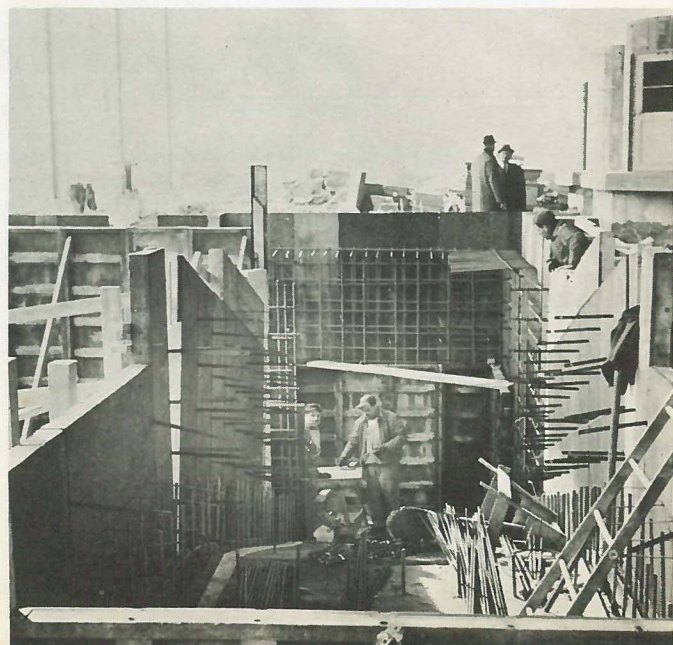


Above, a view of the casting machine floor, showing the three casting machine beds, and hot pipe roll-out skids in position, as installation of machinery and equipment at the plant proceeds on schedule. Space for a fourth machine is reserved for future expansion.

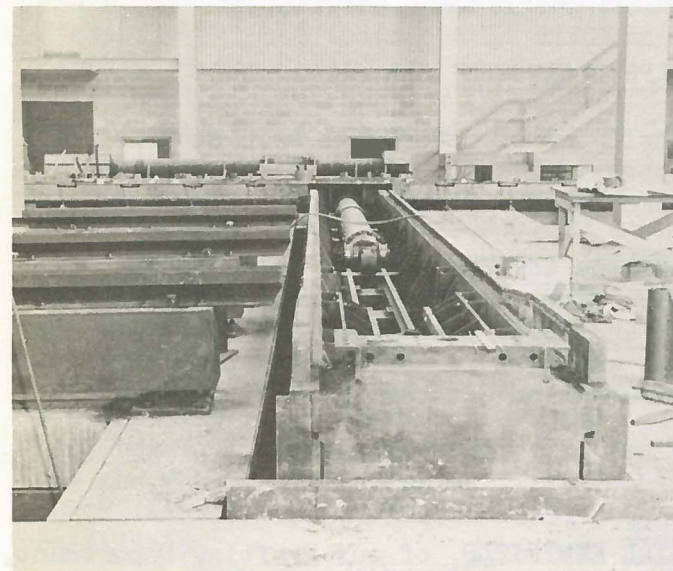
Below, a view showing the installation of the cupola cinder collector. This device cleans the cupola fume exhaust of fly ash, so that clean air will be discharged to the surrounding atmosphere.



Below, construction of the foundation that will house the coke conveyor and handling devices. Note the heavy reinforcing steel for concrete, typical of construction for heavy duty operations throughout the plant.



# CONSTRUCTION PROGRESS

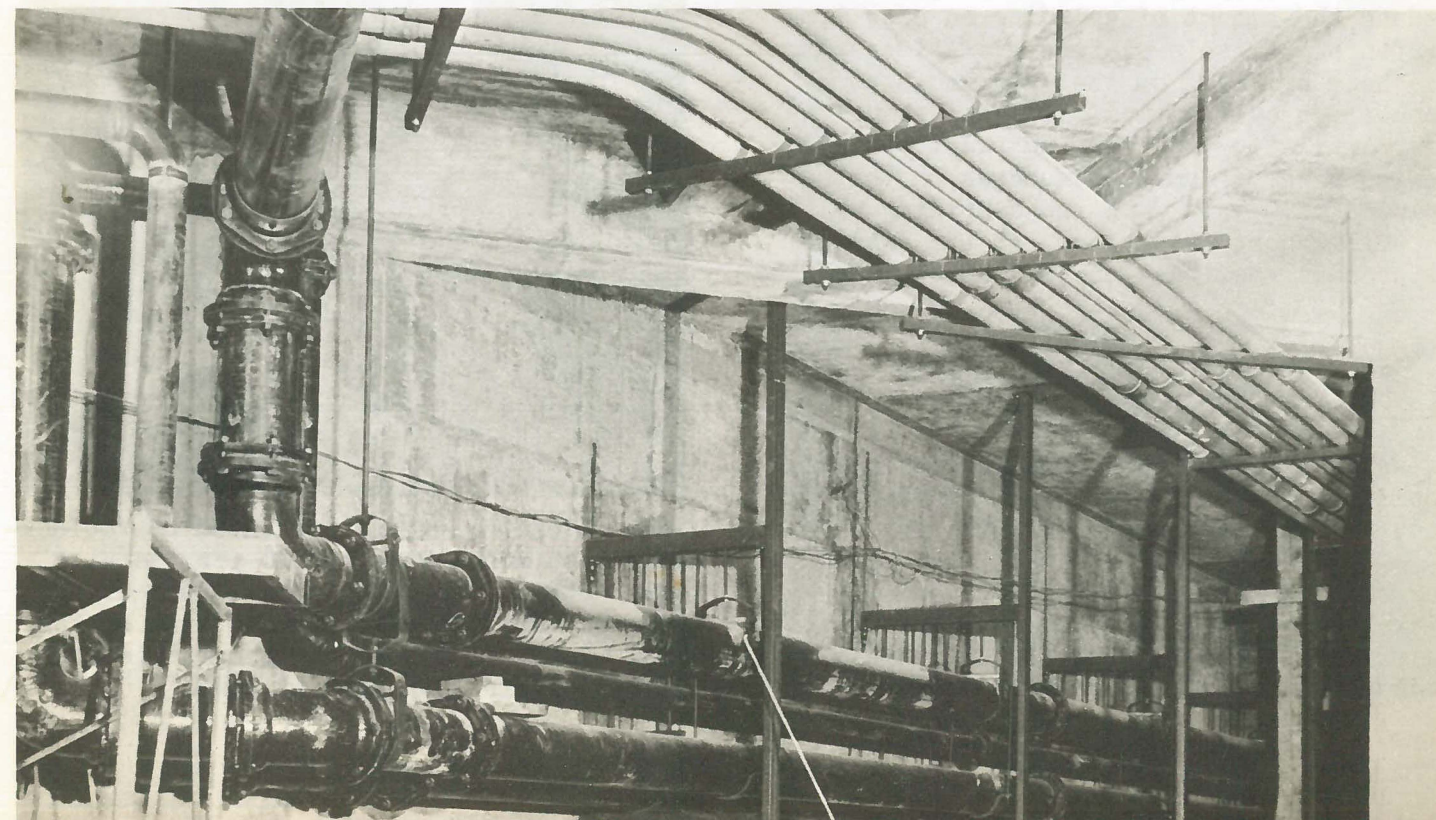


Above is shown a close-up of one of the casting machine beds. Powered by the hydraulic cylinder between the tracks, the casting machine runs up and down these tracks of the bed in casting pipe. To the left are the hot pipe, roll-out skids.



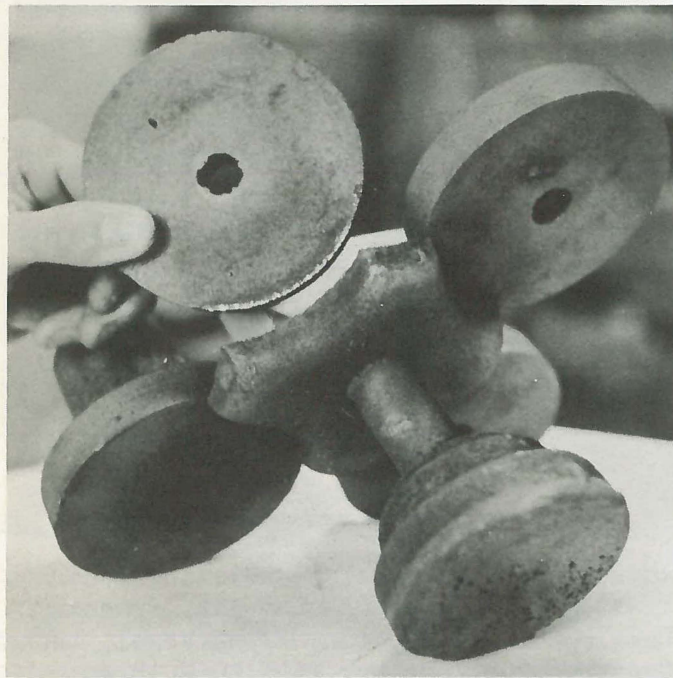
Above, the camera catches distinguished visitors: L. to R., AL FRUCHTL, Process Development, Coshocton; Frank Vogel, Leonard Construction Company; WALT LOEW, Plant Superintendent; CECIL ROYER, Engineer, Coshocton; HUNTER PHILLIPS, Chief Engineer.

Below, a view of the basement under the casting machine floor, which shows some of the service lines leading into the pipe shop from the power house and the pump house. At top, electric conduits, bringing in power; below, water piping, for process water. Convenience of service facilities, for operation and maintenance, is one of the outstanding construction features of the new Bensenville plant.



# IOWA ITEMS

by Con Coupland, Jr.



The above photo is the result of experimental gating done by our Pattern Foreman, GEORGE COOK. It represents considerable time in study and experimentation. This project was undertaken by GEORGE in conjunction with an overall work project being worked out by Gray Iron Research Institute. The purpose of the project is to reduce the amount of grinding on gray iron castings. In this picture a small casting has been broken from the gate known as a Connor, or overlapping gate, and shows the very small fin to be ground away. This experiment was a complete success in the opinion of GEORGE COOK and something which he will report further on, at the Institutes next meeting. Congratulations, George!

\* \* \*

## SICK LIST

It was a pleasure last month to welcome back from the Sick List, BUD SUTHERLAND and DAVE VAN HAAFTEN.

Our only employee to be reported on the Sick List at this time is PAUL VANCE who is expected to be with us before this issue goes to press.

## ALFRED SANDERS

Employees of Iowa Valve were saddened on February 17th to learn of the death of retiree ALFRED C. SANDERS.

AL came to work at Iowa Valve in July of 1946 after working for various employers in and about Oskaloosa. At Iowa Valve he was employed in the Foundry until his retirement on October 1, 1957.

\* \* \*

## GOLF

BILL KENTFIELD, of our Drafting Department, has announced the beginning of the 1958 golf season. BILL, who served as secretary for golf competition, anticipates having between 25 and 30 golfers on the roster. At mid-season another all day golf and picnic outing is planned. All golfers and potential golfers should contact BILL early.



OREN PETERSON, right, presented BUD SUTHERLAND last month with his 10-year service pin. BUD had completed his 10th year on February 4th but was, at that time, on the Sick List. We extend our congratulations to BUD on his 10th year at Iowa.

## BOWLING AT IOWA

The farther our bowling season progresses the hotter becomes the competition between 8 closely matched teams. EMIL BERGLUND, Captain of the Cases, and supported by KENNY HUNT, DICK EVANS and CHUCK HEATON are holding first place by a two game lead. Threatening every step of the way, and in second place, are the Gates with DAVE ROBBINS, PAUL VANCE, HOWARD LANPHIER and EARL SHAFFER. PAUL EVANS, MICKEY YOUNG, RONNIE SHOWMAN and JACK JOHNS, only two games behind the Gates have a slight edge for third place. FARRELL SCOTT and his Covers hold fourth place while JIM BEADLE and the Hubs are tied with KEITH WARD and his Stems. Holding the cellar position are the Wheels and Hydrants, captained by CHUCK LANPHIER and RONNIE SHOWMAN, respectively.

The big news, as always, is the battle for the Interplant Bowling Team, which by recent announcement, will be held in Chicago in May.

Unopposed, DAVE ROBBINS, will qualify for the first team position, while PAUL EVANS holds a 5 pin average over FARRELL SCOTT for second place. Still in solid is DON ALLGOOD who carries a 148 average. A close battle has shaped up between a number of team members for both 4th & 5th place in the competition.

\* \* \*

## FRANCIS WEHRLE SITS IN FOR DICK MICHAELS

FRANCIS WEHRLE our Iowa-Nebraska Salesman, spent three weeks in the Iowa Valve Sales Office while Sales Manager, DICK MICHAELS enjoyed a well earned vacation in the sunny climate of Old Mexico. Francis did an excellent job and it was a pleasure to work with him during this period.

We are looking forward to a well-tanned, well-rested DICK MICHAELS, and a multitude of tall stories about the mysteries of the Incas.

\* \* \*

Rhubarb....Celery with high blood pressure.



Above, Mr. and Mrs. EDWARD KLYN were married February 14th at Kent Memorial Chapel in the Methodist Church in Oskaloosa. Mrs. KLYN is the former ALICE VAN ALST, and is presently employed as secretary to our Sales Manager, DICK MICHAELS. The couple are residing on South Market Street.

Below ALICE opens a wedding gift received from her friends and co-workers.





It has become common knowledge that business in general could be better. This information was passed along to our salesmen by Sales Manager, DICK MICHAELS with instructions to beat the bushes for all new and prospective customers. This picture was snapped as one of FRANCES WEHRLE'S prospects came in to inspect our product.

Seriously, this small animal (above) belongs to LOWELL MYERS of our Foundry who acquired him from a friend in California. There are reportedly very few of this breed in the United States, and they originate somewhere in Central South America. We are not quite sure of the name, but it is generally thought to be a Kinkajou, or honey bear. If any of our readers have more definite information, we would be delighted to hear from you.

\* \* \*

MILLERS ARRIVE AT OSKALOOSA

The RONNIE MILLER family arrived on the 13 of last month, tired from a long trip, but eagerly anticipating the move to our community. RONNIE and Mrs. MILLER with their three children will be settled at the time of this publication at 524 North D Street. RONNIE took over his duties as Plant Superintendent on March 17th.

Once again, we wish to welcome the entire MILLER family to Oskaloosa.

CHARLES SMITH BEGINS NEW DUTIES

Coinciding with RONNIE MILLER'S move to Oskaloosa, CHARLES SMITH will soon spend a short period of time at Coshocton preparatory to opening his office at the Bensenville Plant. CHARLES has purchased a new home in Arlington Heights, Illinois, a short 15 minute drive from the Bensenville Plant. He does not anticipate moving his family until the end of the current school year.

Our best wishes go with CHARLES SMITH in his new assignment.

\* \* \*

EVERY EMPLOYEE IS IMPORTANT

The theme of the following few paragraphs is the importance of every single employe as a strong link in the Iowa Valve "chain". It has often been said, that the most ambitious and most intelligent, and energetic employee is an asset to his company only if he works steadily, being absent only in the case of actual necessity. The words which follow, attempt only to point out that fact.

Xvxn though my typewriter is an old model, it works quite well except for one of the keys. It is true that there are forty-six keys that function well enough, but one key not working makes the difference.

You may say to yourself, "Well, I am only one person. My being at work won't make or break the company." But it does make a difference if you are not at work because our company, to be successful, needs good attendance and the conscientious work of every employee.

So the next time you think you are only one person and that your efforts are not needed, remember my typewriter and say to yourself, "I am a key person in our company and my support is needed very much."

\* \* \*

A TRAGIC MISUNDERSTANDING

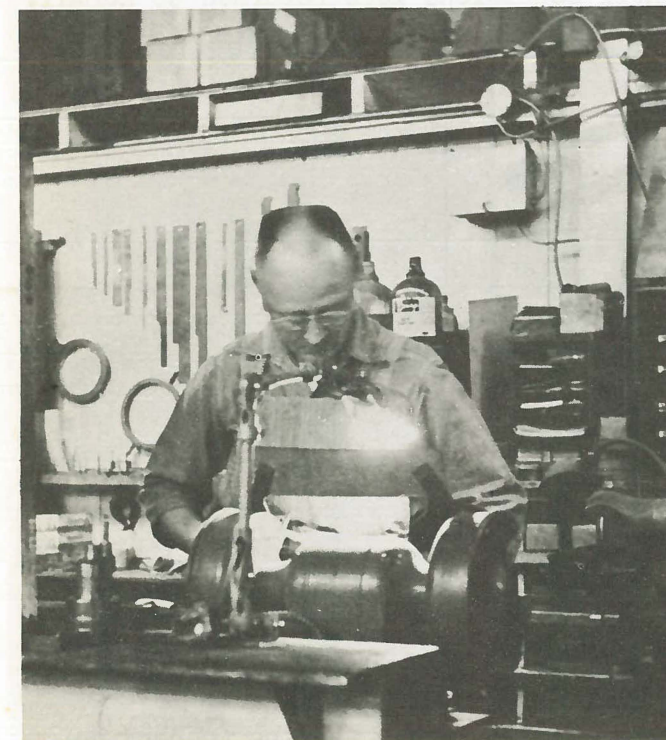
"In the moonlight, my dear, your teeth are like pearls."  
 "You brute! When were you in the moonlight with Pearl?"



CLYDE WEST was snapped during a moment of intense concentration while machining one of our small valve parts.



REX BARNHILL, peering through his protective glasses, is caught by the camera as he tips the mixing ladle in front of the cupola.



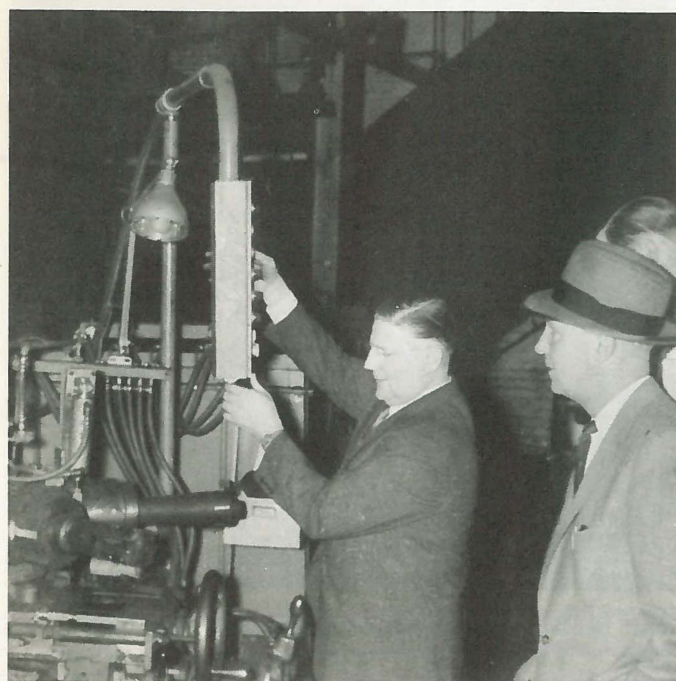
In this picture, PAUL EVANS was caught in the act of regrinding one of his tools.



EARL SHAFFER is one of our Group I machinists and is shown operating a small lathe.

# EDDY EDITION

by Bill Roberts



EDDY VISITORS

TOM RIPLEY, on the right, watches GEORGE MACDONALD as he puts our new push button pneumatic 4" body ringing lathe through its paces.

Mr. TOM RIPLEY, Vice President, Visited the plant on February 5th and 6th. TOM is well known at Eddy for he served as our Works Manager from the time of its purchase by Clow in June 1945 until late in 1946, when he returned to Coshocton. During his visit he made a complete inspection of plant operations and he had occasion to observe the many recent improvements made at Eddy. We will be looking forward to the time when he can visit us again.

We were pleased to have EMIL BERGLUND pay us a visit on February 11 and 12. EMIL was here to study production control methods employed at Eddy.

We were also pleased to have RICHARD MC-HENRY with us on February 12th. RICHARD is Clow's Manager of Employee Training and Development.

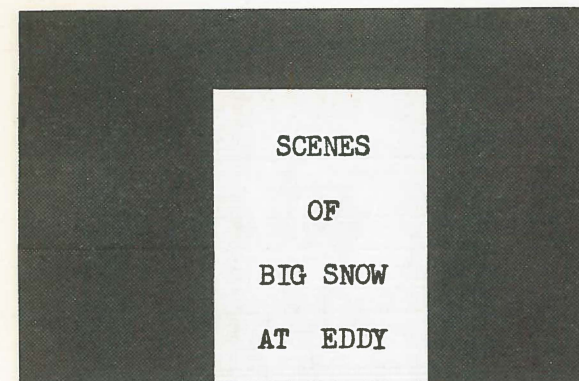
## BLIZZARD OF '58

Like a white phantom from the North, came the paralyzing blizzard that began on Saturday night, February 15th, and lasted through the early hours of February 17th, dumping 18 to 20 inches of snow on Eastern New York and Western New England. Whipped by winds of up to 40 m.p.h., the snow, piled into drifts up to 25 feet in rural areas, made highways impassable in a matter of a few hours, and isolated stalled motorists on the highways.

Almost all forms of public transportation ceased to operate, and those that struggled to remain in operation did so on a reduced schedule. Isolated rural areas were relieved through the efforts of helicopters, that dropped supplies of food, fuel and medicines. A state of emergency was declared by Gov. Harriman until conditions were returned to normal.



Main company street showing foundry on left, and piles of castings covered with drifted snow.



View of south parking lot.



THAYER (MONTY) MONTGOMERY, pauses for a brief moment for this picture. MONTY is our expeditor in production control.



Main company street, showing offices and machine shop on left. Note hugh icicle on machine shop that extends thirty feet from roof to ground.



JIMMY GRANDALL and JOE BOUCHARD take a rest from their job of loading the truck with hydrants at the Hydrant House loading dock. The depth of the snow can be imagined by the snow packed around the wheel of the truck.

## STORK TIDINGS

Congratulations to Mr. and Mrs. STANLEY ZUMBACK on the birth of their first child, a baby girl born at the Leonard Hospital, February 5th. Sheila Ann tipped the scales at 6 lbs. 9 ozs. STANLEY is a mounter in our small valve shop.

\* \* \*

## NEW EMPLOYEES

We would like to welcome two new employees to the Eddy Valve Company:

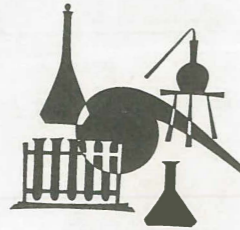
EUGENE KING ..... Iron Foundry Molder

EDWARD HANSELMAN ..... Patternmaker

A

LOOK INSIDE

EDDY'S LABORATORY

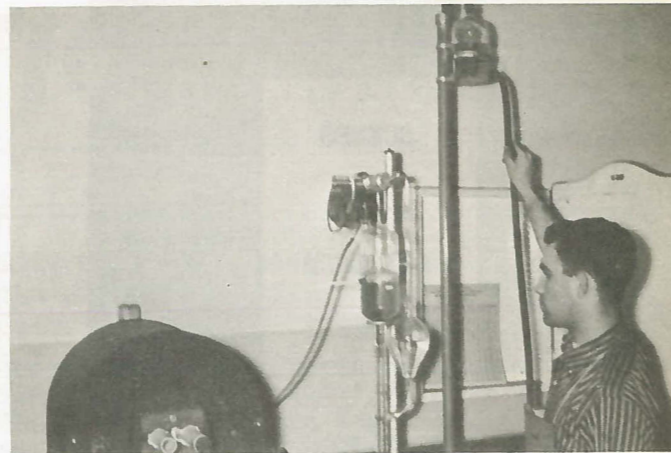


In a small room adjacent to our Brass Foundry is our Laboratory. Here a constant check is made on the metals that go into the castings to see that they meet the required standards.

PETER ROSENBERG, who is a Junior at R.P.I. is studying Chemical Engineering and serves as our part time Lab Technician. PETE'S earnings help pay his school expenses, and he is gaining valuable experience as well. We take pride in the knowledge that we are performing a community service by hiring deserving students of the area so that they may help themselves through school.



Here PETE is conducting a phosphorus content test on a Spectrophotometer.



PETE runs a test through the Carbon Determinator to determine the carbon content of some cast iron filings.



Cast iron filings are being weighed to a prescribed amount for use in the carbon determination test.



PETE inserts a test bar of cast iron into the tensile testing machine. This machine pulls the test bar apart and registers the pounds pull required to pull the bar apart.



EDDY VALVE SUPERVISORY STAFF 1958

This photo taken in February 1958, shows the Eddy Valve Supervisors and Foremen.

Seated in front, left to right: HAROLD VROMAN, THAYER MONTGOMERY, BILLY GUILTMAN, JULIE THEILEMANN, FREEMAN BENJAMIN, WALTER DEYO and FRANK GALERIE.

Standing in rear, left to right: MAYNARD GOYER, BILL LEBLANC, CHARLES DILLON, TONY BALNAITIS, WALT SORENSEN, BOB NIELSEN, CHARLES BRYK, and LEON NIELSEN.

SICK CALL

We are sorry to report that there are still several Eddy employees on the sick list, but things are looking brighter for them, and we hope they will be back at their jobs before too long:

OSCAR COOPER SR. is coming along nicely, but has not received Doctors consent to return to work....JIMMY GREEN is reported doing well following his operation for appendicitis.....ROGER DANIS is expected back to work by the time this issue goes to press. He is recovering from an operation to remove hemorrhoids....MIKE JESKE is still waging a slow battle in combating a lung infection.

**DON'T FORGET YOUR HOMEWORK!**

Be an authority on safety, Dad. And teach it to the youngsters. Help them to practice caution—to and from school, in traffic, at play. Make safety the most important subject of them all.

Be careful . . . the child you save may be your own.





**GOING AWAY PARTY**

The Maintenance crew and some men from the Machine Shop gave JOHNNY O'BRIEN a going away party at Camps Restaurant, Friday evening, February 14th. A spaghetti supper was served and music was provided by DON BURNETT at the piano, ABE CARUSO on the mandolin, and OZZIE COOPER on the drums.

AL (SARGE) FAULKNER who served about 25-years in the National Guard, took JACK aside and gave him some fatherly advice about the Army. JACK is now at Camp Dix, New Jersey.

Above, JACK on the left, is wearing AL's jacket and hat and with a gun on his shoulder, is getting a preview of things to come.

\* \* \*

**WEDDING BELLS**

Congratulations to LAWRENCE RIBERDY on his recent marriage to Kathleen Mahar of North Troy. After a private wedding and reception, the couple left on a wedding trip to New York City.



The family of MICHAEL CENTRELLA appear very happy in the picture above, and well they may be, for resting in Mama CENTRELLA's arms is their new baby Rose Marie, just home from the hospital. MIKE is a laborer in our Iron Foundry.

**BOWLING BITS**

With just a few weeks remaining of the bowling schedule we find the Rings, Captained by GORDIE CLAIRMONT, have a very decided lead of nine games. It doesn't seem likely that they will be unseated from their top position, but stranger things have happened in this sport of kegling. In second spot are the Gates followed by the Covers, Caps, Bodies and Hydrants.

**Team Standings at this time:**

|          |         |
|----------|---------|
| Rings    | 48 - 27 |
| Gates    | 39 - 36 |
| Covers   | 36 - 39 |
| Caps     | 35 - 40 |
| Bodies   | 33 - 42 |
| Hydrants | 33 - 42 |

**Individual scoring leaders:**

|              |                |     |
|--------------|----------------|-----|
| High Single  | ROLAND LANDRY  | 241 |
| High Triple  | BILLY GUILTMAN | 592 |
| High Average | BILLY GUILTMAN | 166 |

Other high average bowlers include ERNIE FOSMIRE and CLARENCE ST. GELAIS, with 164 averages. PHIL RACICOT has an average of 160 and JOE FRANCESCO has a 161 average.

\* \* \*

# CHICAGO'S CHAPTER

by Howard Norain



**TWO NEW POSTING MACHINES IN ACCOUNTING**

Left to right: ETHEL HARRIS, MARILYN STUMPF, GRACE HERBST and EDITH HUKKALA get acquainted with the new NCR Class 32 Posting Machines, which have replaced the old Elliot Fisher type. After three months operation, the employees have found these electrical wonders faster and much easier to operate.

**\$ PRIZE WINNERS \$**

Last month we gave you a report on the 5 girls who represented Clow in the Chicago American Women's Bowling Classic. The team, whose members included, JOANNE SCOTT, SHIRLEY LARSON, ADELIN DUST, DOLORES JAHNKE and MARILYN STUMPF, came in 33rd in this 4-state tournament. This gave them a team prize of \$20.00.

Our congratulations to the girls on their showing in this highly competitive event.

**WADE PLANT VISITED**

On successive Fridays, February 21st and 28th, a number of Jobbing Division employees were guests of the Wade Mfg. Co at Elgin. GERRY KINNALLY, Manager of the Jobbing Division took charge of the group on the 21st. BOB McADAM, Assistant Mgr., headed the group on the 28th. The men were given a complete and instructive tour of the plant which included methods of production, and the use of Wade products, which are primarily drains and plumbing fixture hangers.



**WEDDING  
BELLS**

ADRIENNE (PAJAK) OLSZOWKA and DICK OLSZOWKA became Mr. and Mrs. on February 22nd when they exchanged wedding vows at St. Ferdinand's Church. The ceremony was followed by a reception at the Wonderland Ballroom, with a number of Clow employees in attendance. BILL BURKE, of our Bulletin Desk, was a member of the bridal party.

The couple took a two week honeymoon trip to the Smoky Mountain region. We extend best wishes to ADRIENNE and DICK for an abundance of happiness in the years ahead.

\* \* \*

**CLOW INTERPLANT TOURNAMENT**

RUDY KREMPELS has announced that this year's Clow Interplant Bowling Tournament will be held on May 22nd and 23rd, with Chicago acting as host city for the event.

\* \* \*

**STORK TIDINGS**

BUSTER BONGIORNO of our Operating Dept., announced the arrival of a daughter on the 11th of February. The new baby was named Joyce Ann, and weighed 8½ pounds. Joyce joins an older brother, Joseph, 6 years old and a sister, Joanne, 5.

Our congratulations to BUSTER and his wife Angeline.

\* \* \*

**HAPPY BIRTHDAY!**

JAY MILLER, who retired from Clow in March 1952, reached his 75th birthday on March 4. A card, circulated through the office, was signed by his many friends on the occasion.



**EARLY VACATION**

Above are RUDY PRATH and his 5 year old daughter, Barbara Ann, who traveled to Phoenix, Arizona early in March. Pictured in background is some of that famous Arizona cactus. RUDY was visiting his sister who makes her home in Phoenix.

\* \* \*

**SERVING UNCLE SAM**

WILLIAM "BILL" WANDERSKI, formerly of our "B" Department, is now in the Army. BILL is stationed at Fort Leonard Wood, where he is receiving his preliminary training.

\* \* \*

**NEW EMPLOYEES**

Two new employees have recently joined the Clow ranks. We extend a welcome to the following:

GINA KRAL.....Billing  
CLAUDIA PARRINO.....Billing



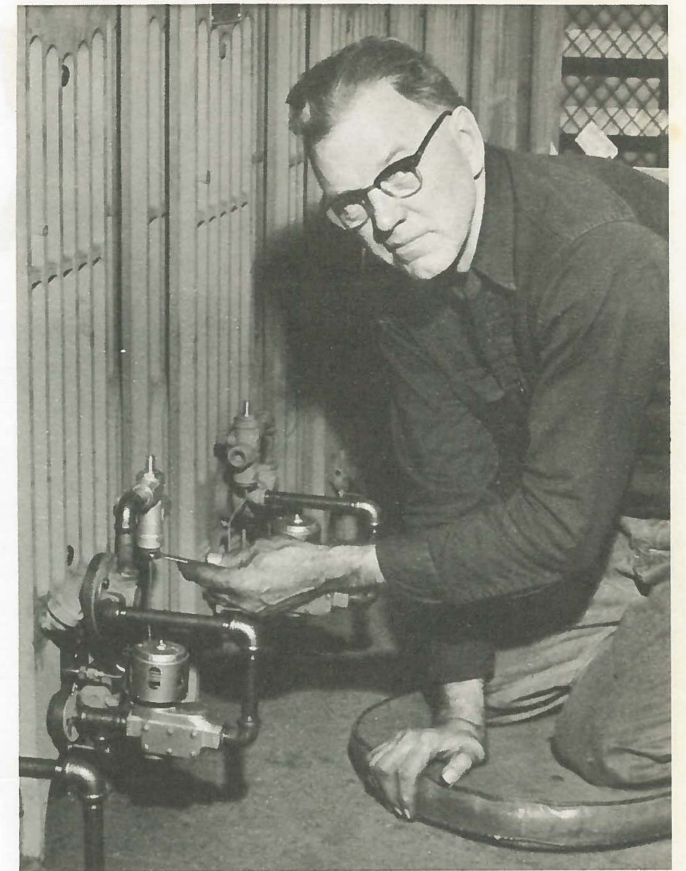
**10 YEARS OF SERVICE**

Congratulations to JOSEPHINE LAY, above, who was awarded her 10-year service pin on February 25. JOSEPHINE is a helper in our cafeteria where she has worked since coming to Clow. One of her many duties is that of helping to serve coffee to the employees during the 10 o'clock break period.

\* \* \*

**BOWLING NOTES**

Glancing over our most recent bowling sheet at press time, we find PETE TIMMERS still holding the leading average - a 174..... A new high team series of 2643, and high team game of 934 was set by the Badgers recently. Team members are: ADELIN DUST, JIM REED, GEORGE MICHEFF and DAN OSKO..... Continuing in 1st place by one game are the Gophers with MARGE CACCAVARI, new member, DICK SABEL, TOM RYAN and BILL BURKE..... Second high game belongs to the Lions with team members, CHICO MAVIGLIANO, SUE GRACE, ERNIE SCHULTZ and TOM DWYER.....



In the picture above we find GUNNAR OLSON testing Gasteam radiator controls. This group of radiators was shipped to Dallas, where much of our Gasteam business had been solicited. Since this picture was taken our Gasteam stock has all but been depleted in the Chicago warehouse.

\* \* \*

**NEWS SHORTS**

On February 19th the mobile x-ray unit of the T.B. Institute made its annual check on all Clow employees desirous of this free service.....BEA FURST, formerly of our Accounting Dept., left our employ on March 14th to await a visit from the stork. ....We hope to see RAY EHRHARDT back at work soon. He has been undergoing some tests at the hospital.....HARRY BOWER got started early this year, playing 9 holes of golf in early March.....TOM BARNEFIELD, sporting a nice tan, returned from a two week Florida vacation at Pompano Beach.....Yes it's true, HOWIE NORAIN has gone Swept Wing, and is driving a 1958 Dodge.....

# of NATIONAL INTEREST

by Scotty Kelley



## INDUSTRIAL RELATIONS DEPARTMENT

The very personable group above comprises the personnel of the Industrial Relations Department at National.

The most attractive member is Mrs MARGARET FORTENBERRY - (Margaret Foote) until a few months ago when she was married to DAN FORTENBERRY, laboratory technician in the Specials Foundry.

At the left is J. B. Brand, Jr., who was head of the Time Study Department and was recently appointed to the position of Director of Industrial Relations for the National Works. J.B.'s studies in college, together with his full knowledge of the National Plant, his fine personality and natural friendliness qualify him to this important position. As head of the department he will supervise all of the activities, which include employment, Personnel Relations, health and safety, recreation, supervision of rental property, plant protection service, application of the various insurances and many other important phases of operation.

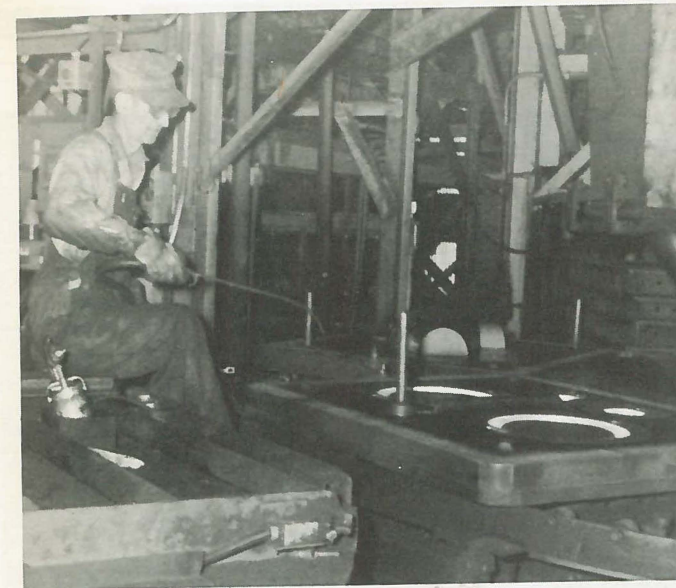
Everyone knows and loves SCOTTY KELLEY. SCOTTY has been carrying on the Personnel Department for quite some time but now has the official title of Personnel Director. He will assist J.B. in the phases of the work with which he is very familiar, and will act as Office Manager of the Personnel Department. Though SCOTTY is not our tallest employee, he is one of our most active and best liked. In addition to other abilities, SCOTTY is an excellent camera man and is National's Editor for CLOW NEWS.

LEONARD BRYANT, at Margaret's left, is one of the numerous and effective BRYANTS at National. LEONARD carries the name with pride to the family and to National. As Safety Engineer, LEONARD looks out for employees' safety and health, plant house-keeping and other duties. His enthusiasm in his chosen field is contagious. LEONARD is a member of the American Society of Safety Engineers and well qualified for his important work.

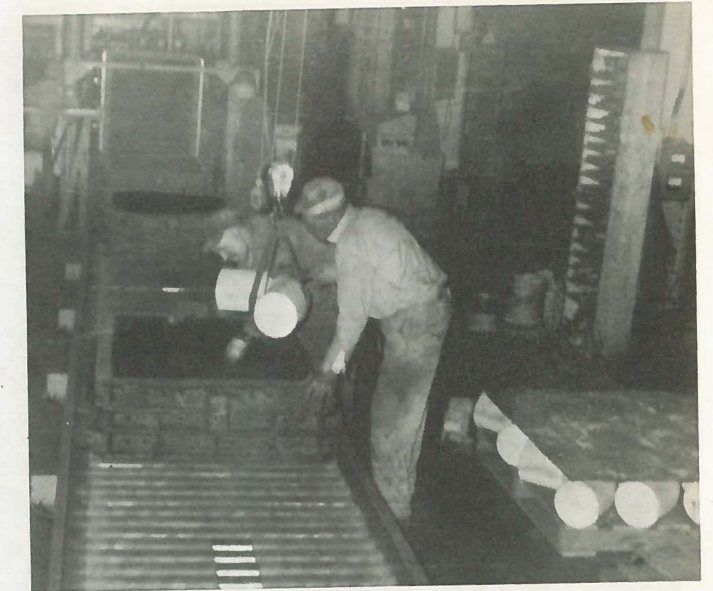
\* \* \*

## SPECIALS FOUNDRY SETS NEW RECORD AT NATIONAL

Congratulations! On February 26, 1958 a new record was established on the automatic molding circuit in the Specials Foundry as 369 molds were completed. This is a record for more than 18 months of operation of the molding circuit. The day's run, incidentally, exceeded the best previous day's operation by 20 molds. Records like this renew our confidence in the equipment, and we become more optimistic about the future, and our ability to get business. The co-operation of everyone in addition to good equipment is the answer. Congratulations to all the men in the Specials Foundry, Maintenance group and all who helped to establish this record.



J. R. MOORE is shown at his station on the Automatic Molding Circuit in the Specials Foundry.



CHARLIE STARTLEY and ED ALLEN are shown setting a core on the assembly line just before the molds reach the closing station.



DALTON MCKINNEY is shown at the closing station closing a mold.



LUKE SMITH is shown pouring iron to complete a mold.

# COSHOCTON COMMENTS

by Jim Clow

## CONGRATULATIONS CORNER

We at Coshocton are always proud when someone is singled out for some honor, accomplishes something out of the ordinary, or completes a lengthy training course. From time to time we like to publicize an award winning suggestion, clean heats, etc.

This month we would like to present several people and groups who have performed outstanding service recently.

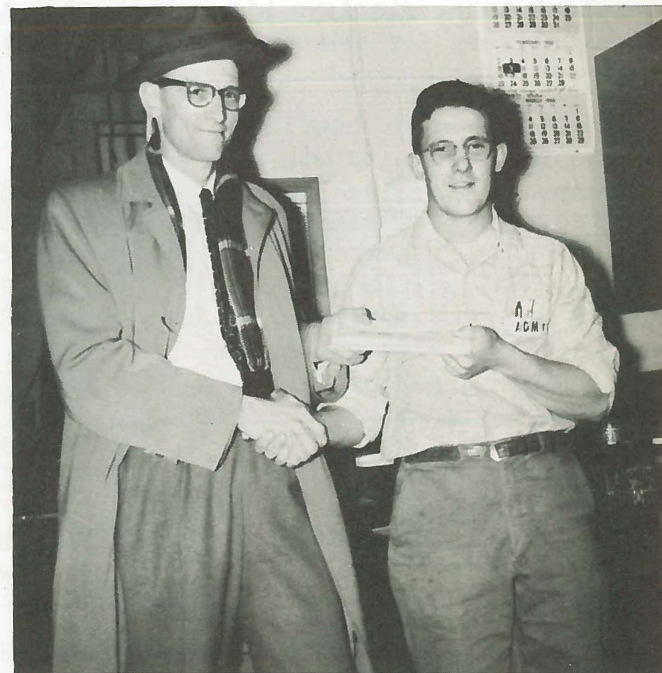
Pictured below, is the machine crew of HARLEY RODGERS which set what we believe to be a world's record for the production of 8" pipe. On the second shift on Feb. 12th, RODGERS' crew produced, during the eight hour shift, 339 pipe of which 2 were scrapped. This makes an average production



Record setting pipe crew and supervisors. L. to R.: FRANCIS THOMPSON, MAX COX, HARLEY RODGERS, JOHN BRYANT, "BUNK" CLARK, and ROBERT UNGER.

of good pipe of over 42 per hour. Mr. SAM CLOW wrote this crew as follows: "The competitive spirit shown by the crew in achieving this wonderful rate is the spirit that makes our company a strong one. I am personally very proud of the crew that can make such a record and feel sure that such a rate (likely a world's record) will stand until they themselves break it".

VIRGIL GARY MEEK, Technician in the Laboratory, recently received his diploma from the International Correspondence School for the successful completion of a course in Foundry Practice. He received a check from SAM CLOW for one half of the cost of this course as is the practice for those who successfully complete such courses.



VIRGIL GARY MEEK receiving check and congratulations from SAM CLOW upon his completion of an I.C.S. Course.

In addition to the many people from Coshocton Plant who have been serving on many committees in the Gray Iron Research Association, a recent edition of the AFS News announced the formation of a Ductile Iron Division. A.J. "AL" FRUCHTL has been given the assignment of heading the committee responsible for work on alloying to produce ductile iron. AL is in charge of operating our experimental cupola here at Coshocton so this committee will have the advantage of his outstanding knowledge of the art of making ductile iron.

Four years ago JACK FARMER and GUY COSMAR started on the long road of apprenticeship. As of the 3rd of March this year, these two men completed the long training course and are now recognized as Journeyman Machinists. RUSSELL LAIRD and ROLAND EMLER have served as instructors to these two men as well as to the other men still in training.

Our sincere congratulations to all these men who have recently received recognition for jobs well done.



L. to R.: "BOOTS" BOLEN, RUSSELL LAIRD, GUY COSMAR, JACK FARMER, BILL LAIRD, and ROLAND EMLER celebrating the successful completion of COSMAR and FARMER'S apprenticeship.



Housekeeping Inspection Team: "TIP" JENNINGS, VIRGIL MEEK, FRED WILLIAMS, and BILL MICHAEL.

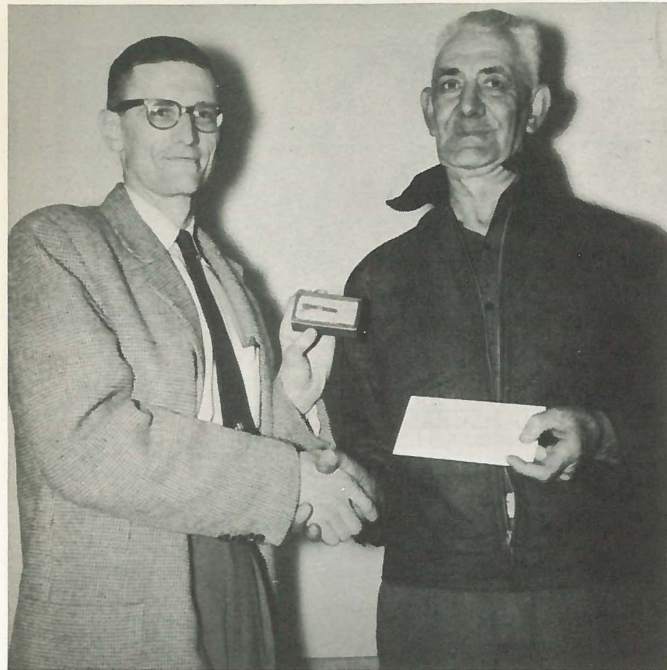


North and South Tuscarawas Township Firemen after Coshocton plant tour.

## SAFETY NOTES:

Each month HOWARD SHERRETS and a group of representatives from the shop tour our plant on a good housekeeping and safety inspection. They poke into every nook and cranny to see that hazardous conditions are noted and brought to the attention of the proper people. Last month HOWARD was accompanied by KENNETH JENNINGS of the Mold Floor, VIRGIL MEEK of the Shipping Dept, FRED WILLIAMS of the Cement Line, and BILL MICHAEL of Mold Floor Finish. As usual, the group found our housekeeping to be of good order.

The choice of the weather was not good but members of two volunteer Fire Departments in our county toured the plant recently. We have recently revised our zoning of the plant for fighting purposes and these men were invited to tour the area to get an idea of the new locations. RUSS LAIRD, Clow Fire Chief, along with HOWARD SHERRETS and OAKLEY COURTRIGHT, guided these volunteer fire fighters through the snow and near zero weather. It is gratifying that these men would come to our plant under bad weather conditions to learn how they could help us in a time of need.



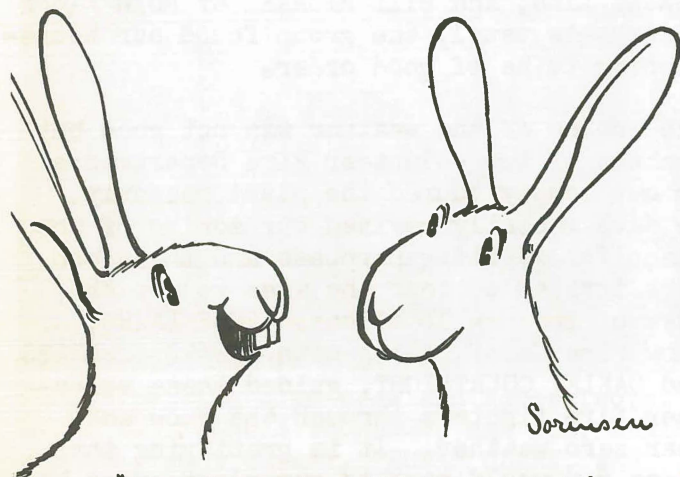
BILL DUNFEE receiving service award from SAM CLOW.

30 YEARS OF SERVICE

WILLIAM "BILL" DUNFEE has been on the job as one of our Watchmen since 1928. Prior to his assignment to this job, he worked in the Mold Floor, Machine Shop, and in the Maintenance Department.

BILL was recently presented with a tie clasp bearing a 30-year service emblem.

\* \* \*



"MONEY MULTIPLIES FASTER THAN WE DO  
WHEN YOU INVEST IN U.S. SAVINGS BONDS!"

REPORTER'S RAMBLINGS:

Springtime is usually known as the time to move and this year is going to be no exception here at Coshocton. We aren't scattering to the four winds but a number of Coshoctonians are following Horace Greeley's advice and are moving west. We hate to see them go but realize that these things must go along with the progress of our Company. Iowa and Bensenville are going to get the benefit of many years of training and service.

R.L. "RONNIE" MILLER has been here at Coshocton in our Engineering Department for eight years with a little time out for Cascade Iron project. He is a graduate of Case Institute of Technology. RONNIE and his family will have moved to Oskaloosa by publication time and we wish them the best of luck.

DON SLAUGHTER, who for the past few years has been Night Superintendent, has 23-yrs. of foundry experience to take to Bensenville. We know that his help will be invaluable in getting that shop into production. The Slaughters have purchased a home in Schiller Park and expect to move around the first of April.

RODNEY PHILLIPS and his family will move to their recently purchased home in Park Ridge around the middle of April. RODNEY will assume the duties of Personnel Manager to begin staffing the Bensenville Plant. RODNEY has recently been in the Production Department and is presently acquainting himself with personnel functions.

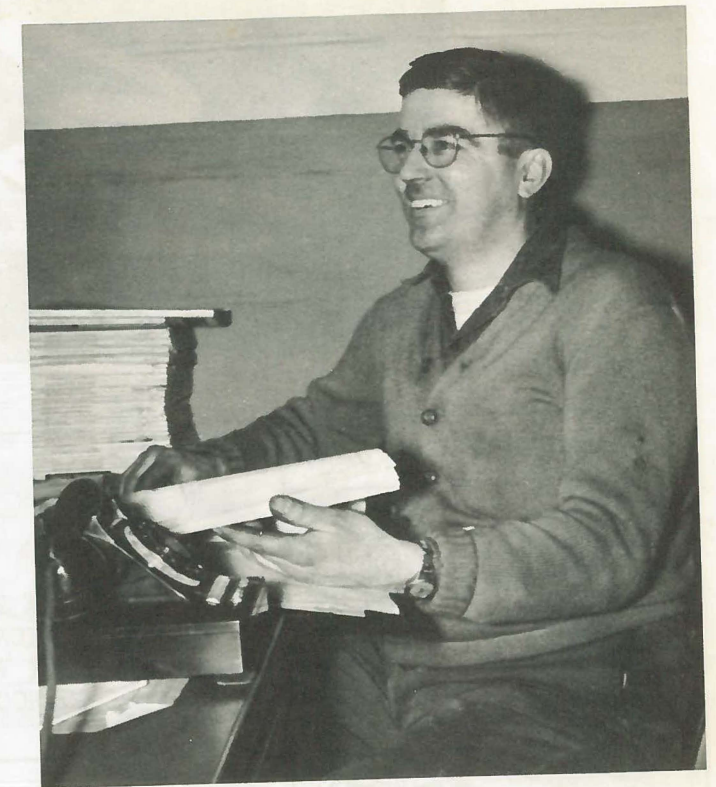
FRANCIS BEGLEY has had 20 years experience in the electrical maintenance field and goes to the Bensenville Plant well qualified in seeing that instrumentation and electrical equipment is in order.

Others who are moving west but of whom no pictures are available are HAROLD SCHLARB, BOB ROBINSON, DICK DEKKER, LEW GRACIK and HAROLD MEEKS.

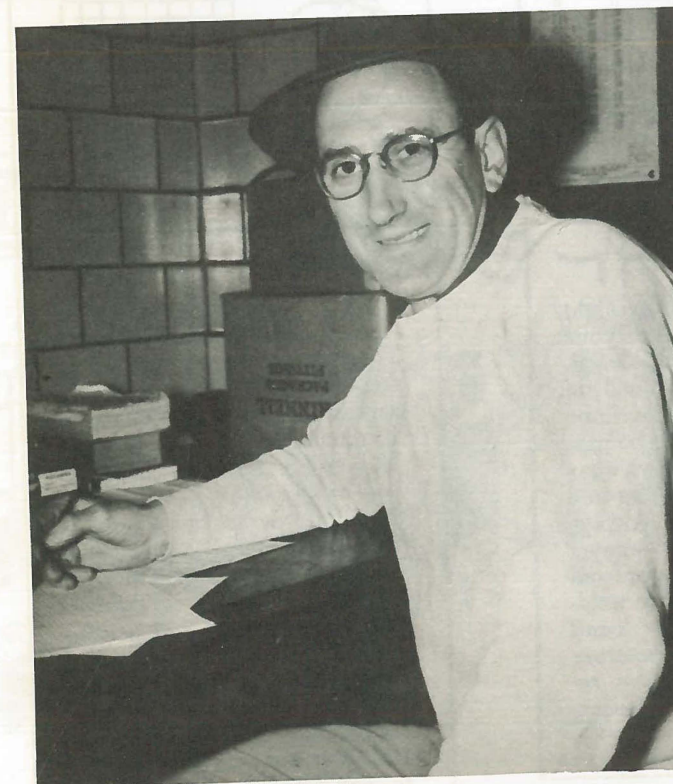
We know that ED WHITE and WALT LOEW are getting experienced and qualified people to help them get the plant in production and also know that the communities that these men move into will be getting valuable additions. Our best of luck to them.



RODNEY PHILLIPS



FRANCIS BEGLEY



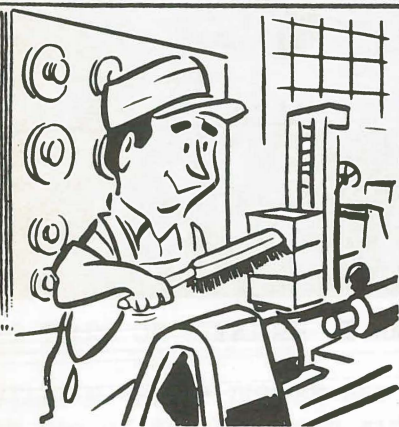
DON SLAUGHTER



R. L. MILLER

# Safety

## CLEAN UP AFTER EVERY JOB



One way to protect yourself from an accident is to keep everything clean and orderly in your work area. Clean up scraps around your machine, dispose of debris in your area, pile material neatly and properly and return surplus to stock. Have a safe place provided for tools and keep them there when not in use. Avoid placing tools on machines where they can get jarred or shaken off, fall and hurt someone. And watch out that grease and oil aren't underfoot to cause a slip and fall. All of this not only protects you but everyone who comes into your area.

© AMERICAN MUTUAL LIAB. INS. CO.

Here are the points-to-date in the Annual Safety Contest for February:

|                 |       |
|-----------------|-------|
| IOWA VALVE..... | 96.00 |
| NATIONAL.....   | 96.00 |
| EDDY VALVE..... | 96.00 |
| COSHOCTON.....  | 96.00 |

## PROTECT YOUR EYES AND YOUR LIVING



You depend upon your eyesight six times more than all of your other senses of sound, smell, touch and taste combined to earn your living. To continue to earn a good living — be particularly careful to always wear your goggles in all chipping and grinding operations. Always wear colored goggles or an eye-shield to protect your eyes from glare and sparks on any welding operation. *However small you think the job is — however quickly you can get it done, remember eye protection every-time.*

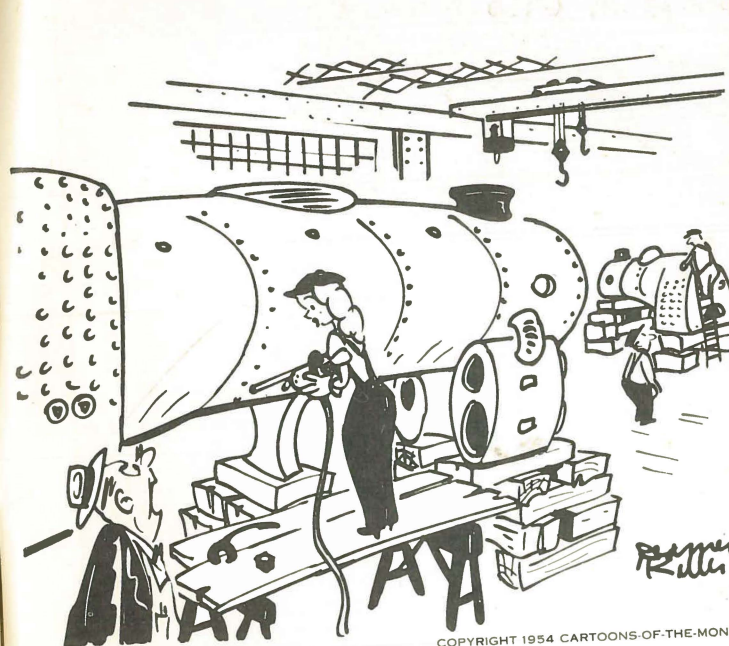
© AMERICAN MUTUAL LIAB. INS. CO.

## AS YOU GROW OLDER, STAY SAFE



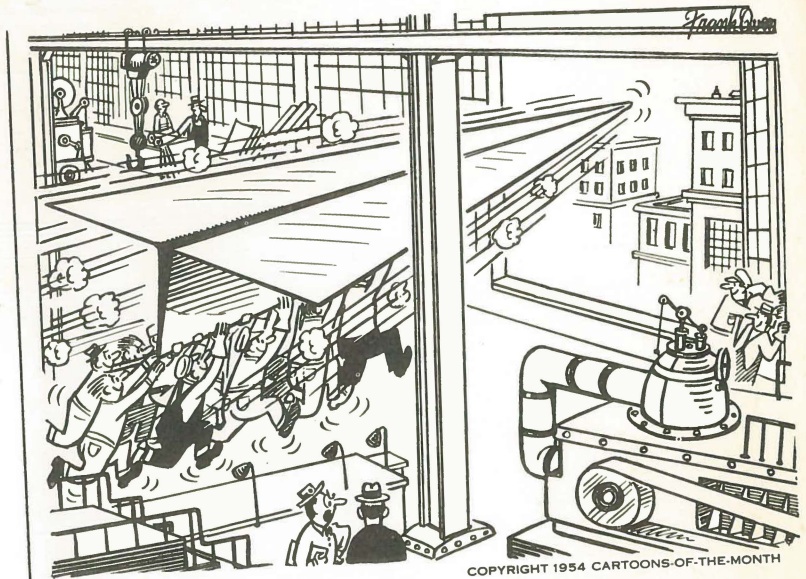
The experience and skill of an employee with long years of service is usually found to be a valuable asset to the company. If you are an older employee you are probably familiar with the safe way to do your job. It is well to keep in mind, however, as you get along in years that your reactions slow down, that your eyesight and hearing can fail, and other changes that come with age can develop. Use your good judgment in recognizing any physical defects that can bring about harm to you in your work. Have them corrected quickly in the best possible way.

© AMERICAN MUTUAL LIAB. INS. CO.



"You'll have to turn it on, Miss. Just saying 'Rat-tat-tat-tat' won't do it!"

COPYRIGHT 1954 CARTOONS-OF-THE-MONTH

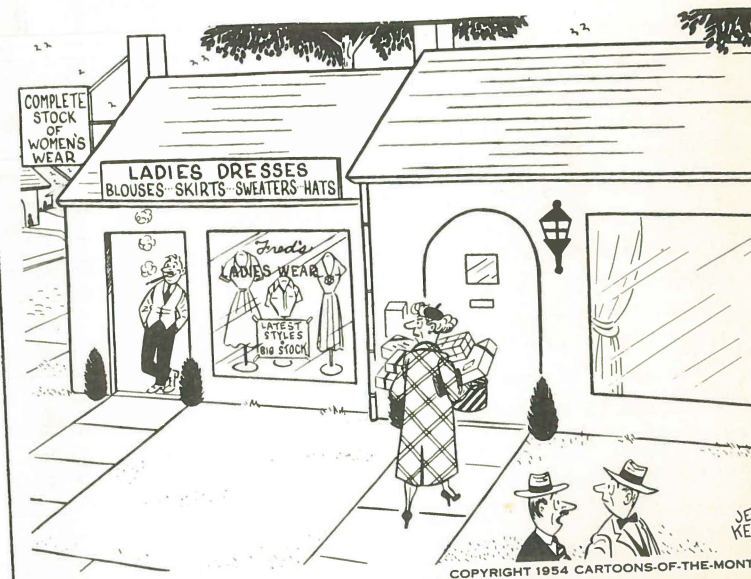


"It makes me laugh, the way you people at the main office complain about your help throwing paper airplanes!"

COPYRIGHT 1954 CARTOONS-OF-THE-MONTH



COPYRIGHT 1954 CARTOONS-OF-THE-MONTH



"Fred got fed up with his wife wearing a dress once or twice, then saying she was tired of it! I understand he's doing very well!"

COPYRIGHT 1954 CARTOONS-OF-THE-MONTH