

**Faucet Firm Started**

The Sterling Faucet Co., manufacturers of brass goods, was organized here Oct. 29, 1913.

From that time until March of 1914 the company operated near River st. In March the plant was destroyed by fire. The plant was never rebuilt.

In 1946 Alchrome Products Co. was built in the same location.

**EIGHTY YEARS AGO - 1940**  
 500 youngsters take part in the Newcomertown Easter Egg Hunt. Over 1,500 attend Easter services including 250 for Sunrise Services.  
 Survey completed for widening W. State Street.  
 Courses of study at Newcomertown High School to be changed and put in four classifications.  
 Newcomertown Chamber of Commerce closes drive for Sterling Faucet Co. with \$21,000.

**Faucet Firm Started**

The Sterling Faucet Co., manufacturers of brass goods, was organized here Oct. 29, 1913.

From that time until March of 1914 the company operated near River st. In March the plant was destroyed by fire. The plant was never rebuilt.

In 1946 Alchrome Products Co. was built in the same location.

1964 COSA



Sterling Faucet Co. state st., south



**JOHN RUBY**

**MORGANTOWN, W. Va.** John Wesley Ruby, 69, prominent industrialist, and native of Coshocton County and former Newcomerstown resident, died at 2:25 p.m. Monday at University Hospital in Morgantown, following a long illness.

Mr. Ruby was born Dec. 22, 1902, at Plainfield, a son of Oscar and Franey Leach Ruby and was married Aug. 26, 1926, to Hazel Robinson, who survives.

Also surviving are one sister, Mrs. Clair Boreman, San Jose, Calif., along with six nieces and three nephews. Three sisters are deceased.

Services will be held at 2 p.m. Wednesday at Dering's Funeral Home in Morgantown with the Rev. Dr. E. David BuBois officiating. Burial will be in the East Oak Grove Cemetery in Morgantown.

Friends may call today at the funeral home.

It was requested that in lieu of flowers, if so desired, gifts may be made to the West Virginia University Foundation for Cancer Research.

Mr. Ruby became associated with the old Sterling Faucet Co. plant in Newcomerstown in 1924 and became superintendent of the buffing department. In 1939, a fire destroyed the Newcomerstown plant and a year later it was moved to Morgantown.

A resident of Morgantown for 32 years, Mr. Ruby rose in the executive ranks of the copper and brass fittings manufacturing plant. Following retirement of John Beggs, president in 1943, Mr. Ruby became president and assumed complete control of the firm.

Mr. Ruby acquired ownership of the Morgantown company which later became a subsidiary of the Rockwell Manufacturing Co. of Pittsburgh. He served as a director on the Rockwell board.

During his long career, Mr. Ruby held interests in some 18 businesses which included manufacturing, mining, construction, real estate, hotel management, and recreational development.

Mr. Ruby had been long active in the Morgantown Area Chamber of Commerce civic activities and was a member of the Wesley United Methodist Church. He also belonged to a number of Masonic bodies in Morgantown and Wheeling.

## Hospital to be named after natives of county

A pair of county natives are the key behind a new hospital at West Virginia University.

Hazel Ruby McQuain has donated \$8 million to West Virginia University to help in the construction of Ruby Memorial Hospital. The donation was made in memory of her late husband, John Wesley Ruby.

Ruby was from Plainfield, and McQuain was from the Roscoe area.

Ruby was a community leader and businessman in Morgantown, W. V., having moved the Sterling Faucet Co. to Morgantown from Ohio in 1940.

During his remarkable 47-year career, he rescued idle plants, revitalized a dozen defunct companies and brought them back to productivity. Unafraid to take risks, he assembled a very impressive set of holdings in agriculture, mining, road paving, poultry processing and feed mills. He became famous for his stables of trotting horses," the program from the groundbreaking ceremony states.

McQuain also has been active in the Morgantown community. She is president of Ruby Enterprises Inc. and is a member of West Virginia University Foundation Board of Directors and the Salvation Army Board of Directors. For her efforts, she

was named the Most Loyal West Virginian in 1983.

About 400 people attended the groundbreaking ceremony in late January for the new hospital. Snowfall and slippery roads reduced the crowd for the ceremony, which was held indoors.

The president of West Virginia University and West Virginia University Hospitals' board chairman, G. Gordon Gee, called McQuain's \$8 million donation, "the largest single gift given to any institution of higher education in this country this past year, and perhaps one of the largest single gifts given this decade," according to a report in the Dominion Post.

Included in the groundbreaking ceremony was a model of a private hospital room so those attending could see what the new facility would provide. The new hospital will replace West Virginia University Hospital.

Construction of the new hospital began in late 1984. The facility was named Ruby Memorial Hospital "to forever memorialize both Hazel Ruby McQuain and John Wesley Ruby who recognized West Virginia as the seat of their good fortune," Gee commented in the groundbreaking ceremony program.

*Sterling Faucet Co.*

# **ALCHROME PRODUCTS COMPANY**

NOW

## **(ACCURATE PRODUCTS)**

ALCHROME PRODUCTS COMPANY was founded by Mr. F. Herbert Smith (Herb) in 1946, when a new building was constructed on the site of the old Sterling Faucet Company. The start up of the company was financed through the sale of Preferred Stock (later recalled) and savings of Herb and Dorris Smith.

Herb (1914-1991), was the stepson of Clark Beggs, who was part owner of Sterling Faucet Company. Herb graduated from the University of Pittsburgh with a degree in Mechanical Engineering and first worked for the Sterling Faucet Company prior to enlisting in the Army in 1942.

Sterling Faucet, the forerunner of Alchrome, was founded in Newcomerstown in the mid 1920s, by John and Clark Beggs. The products manufactured were brass gas cocks, water faucets, and sink legs. The plant was destroyed by fire in 1940 and was moved to Morgantown, West Virginia, in 1941, together with the machinery and equipment when an offer of a vacant plant and other advantages

**was made to move Sterling Faucet to Morgantown by a group of business men in Morgantown, West Virginia.**

**In 1943, John Beggs, upon his retirement, sold Sterling Faucet to Mr. Wes Ruby and later Sterling Products Co. in Morgantown was to become a very large and successful company.**

**IN THE BEGINNING, Alchrome manufactured water faucets and soon added a foundry, machinery, and finishing facilities to make other brass products.**

**In 1956, Alchrome purchased the Lineburgh Manufacturing Company in Uniontown, Pennsylvania, whose products were rough brass faucets and shower drain fittings. The Lineburgh name was changed to Victor Brass (refer to catalogues and at the end of article) and continued to operate in Uniontown, Pennsylvania, until 1962, when the operation was combined with the Alchrome facility in Newcomerstown.**

**The principal products manufactured by Alchrome were pipe fittings and water faucets sold to the U.S. Government, commercial shipping industries, and**

**wholesale plumbing supply houses having a wide distribution network as Alchrome brass, bronze, and copper products are well known for their quality throughout the United States.**

**In 1991, water faucets were eliminated, due to lower prices from imports and manufacturing was concentrated on bronze pipe fittings on flanges, primarily for the U.S. government.**

**The Commercial Castings in Midvale, Ohio, manufacturer of iron, steel, and bronze castings was purchased by Alchrome in 1992 as an additional facility.**

**MR. HERB SMITH (ATTAINED THE RANK OF MAJOR IN THE U.S. ARMY)  
RETURNED TO NEWCOMERSTOWN FOLLOWING WORLD WAR II, WHERE  
HE STARTED THE ALCHROME COMPANY IN 1946.**

**HERB MARRIED DORRIS (1915 - 1991), THE DAUGHTER OF LORIN  
PALMER (FORMER PRESIDENT OF THE OXFORD BANK (NOW BANK ONE)  
AND MELISSA PALMER (MANAGER OF THE NEWCOMERSTOWN HOME  
SAVINGS AND LOAN (NOW FIRST FEDERAL SAVINGS BANK).**

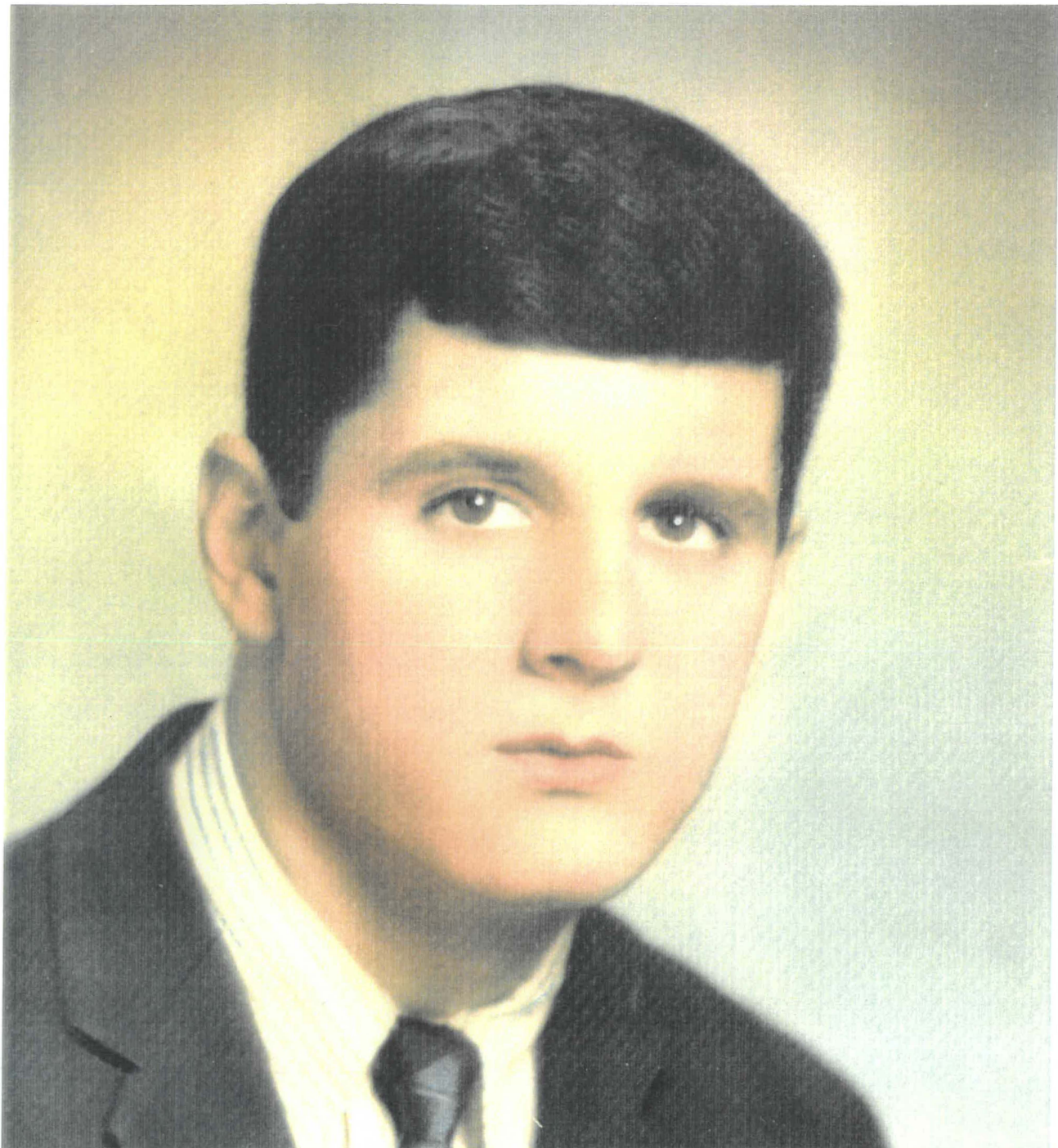


**HERB SMITH**



**DORRIS SMITH  
GRADUATE BOWLING GREEN UNIVERSITY .  
EDUACTION TEACHER IN NEWCOMERSTOWN  
SCHOOLS FOR 20 YEARS.**

IN 1973, HERB AND DORRIS' SON, CLARK, KNOWN AS SKIP, GRADUATE OF THE UNIVERSITY OF MISSISSIPPI WITH A DEGREE IN CHEMICAL ENGINEERING (WHO HAD WORKED FOR DuPONT FOR 7 YEARS) CAME HOME TO JOIN HIS FATHER, HERB, IN MANAGING ALCHROME PRODUCTS.



**"SKIP" SMITH IS ACTIVE IN THE NEWCOMERSTOWN COMMUNITY AND HAS SERVED ON THE BOARD OF PUBLIC AFFAIRS AND THE NEWCOMERSTOWN SCHOOL BOARD. HE IS PRESENTLY A DIRECTOR OF BANK ONE, DOVER, NEWCOMERSTOWN, CHAMBER OF COMMERCE, DIRECTOR NEWCOMERSTOWN NURSING HOME, TUSCARAWAS COUNTY AAA, AND NEWCOMERSTOWN BUSINESS AND PROFESSIONAL MEN'S CLUB.**

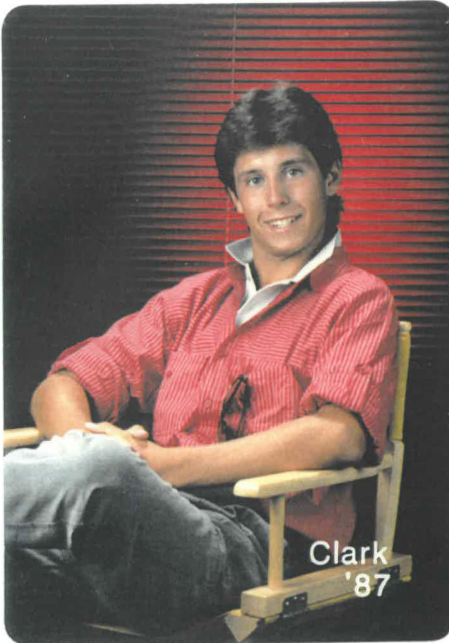
**SKIP SMITH'S FAMILY CONSISTS OF:**



**CAMILLE WILKINSON MARRIED SKIP IN 1967. SHE GRADUATED FROM THE UNIVERSITY OF MISSISSIPPI, SPEECH THERAPY. PRESENTLY SHE IS SPEECH THERAPIST IN NEWCOMERSTOWN SCHOOLS. SHE IS AN ACTIVE PARTICIPANT IN THE NEWCOMERSTOWN SWEETHEART FOLLIES, WHICH RAISES MONEY FOR WORTHY PROJECTS IN THE NEWCOMERSTOWN COMMUNITY.**



SON, CLARK



DAUGHTER, JOCELYN



DAUGHTER, COURTNEY



GRADUATE OF OTTERBEIN COLLEGE. DEGREE IN BUSINESS 1991.

GRADUATE OF OTTERBEIN COLLEGE. DEGREE IN LIFE SCIENCE 1994.

GRADUATE OF DENISON UNIVERSITY. DEGREE IN ENGLISH AND COMMUNICATIONS 1994

SINCE THE DEATH OF HERB SMITH, ALCHROME HAS DEVELOPED A PRODUCT LINE OF COMMERCIAL THREADED AND COPPER SWEAT FLANGES AND OTHER SPECIALTY BRASS PRODUCTS. (SEE PHOTOS)

SKIP SMITH, SON OF HERB SMITH, BECAME PRESIDENT IN 1991.

THE COMPANY EMPLOYS BETWEEN 20 AND 30 PEOPLE, DEPENDING ON SALES VOLUME.

ACCURATE'S SMALL SIZE SOMETIMES WORKS TO ITS ADVANTAGE BECAUSE THIS COMPANY CAN MORE EASILY MODIFY ITS EQUIPMENT TO ACCOMMODATE NEW AND SMALL VOLUME ORDERS.

THE ALCHROME PRODUCTS NAME WAS CHANGED TO ACCURATE PRODUCTS ON JANUARY 1, 1995, WHICH BETTER REFLECTS THE COMPANY BUSINESS AS A FULL SERVICE MACHINE SHOP FOR BOTH IN PLANT AND OUTSIDE TRADE AND THE PRODUCT LINES OF QUALITY BRONZE AND BRASS PIPE FITTINGS AND FLANGES. THESE SPECIALTIES, TOGETHER WITH AN EXCELLENT GROUP OF EMPLOYEES, WHO KNOW THEIR JOBS, DO THEM WELL, AND TAKE PRIDE IN THEM, HAS MADE ACCURATE PRODUCTS A SUCCESSFUL COMPANY IN THE BRONZE AND BRASS SPECIALITY BUSINESS.

#### HERB AND SKIP SMITH



**BIG AND LITTLE** — Alchrome president Herbert Smith, left, and son Clark "Skip" Smith demonstrate size variance in the company's products. The small pipe fitting held by the younger Smith will probably be used for indoor plumbing while the larger fitting will be installed in a battleship. (Tribune Photos by Eric Ernst)

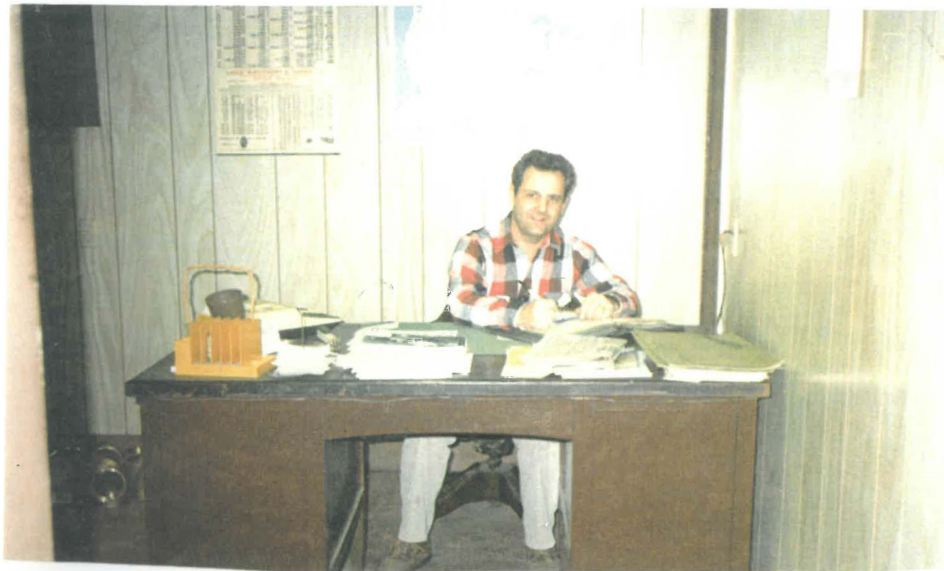




**ALCHROME EMPLOYEES**



**HERB SMITH  
PRESIDENT AND  
FOUNDER  
DECEASED**



**SKIP SMITH  
PRESIDENT**



**NORMA GARVEY  
LONG TERM EMPLOYEE**

**ALCHROME EMPLOYEES**

**LATE 1940S AND EARLY 1950S**

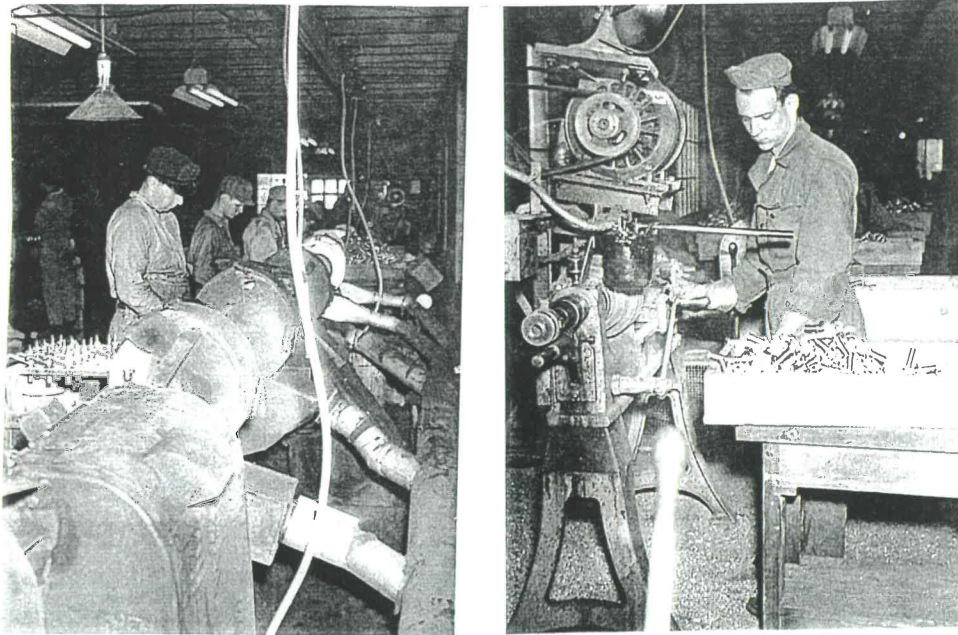


**BACK ROW - LEFT TO RIGHT: HERB BUNDY, PAUL PARKS, BILL PALMER, DEAN GAY, BILL HENDERSHOT, BOB RICHMOND, BURTON DeWITT, HERB SMITH, MERLE PENROD.**

**FRONT ROW - LEFT TO RIGHT: RALPH LEWIS, GENE GOODALL, MAX MACKEY, AB LEWIS, HOMER DENNIS, ROGER GLAZER, PAUL BUNDY**

## ALCHROME FACTORY

### POLISHING BRASS PARTS



### AUTOMATIC MACHINE POURING LINES



**ALCHROME FACTORY**

**FOUNDRY - POURING BRONZE TO FORM CASTINGS**

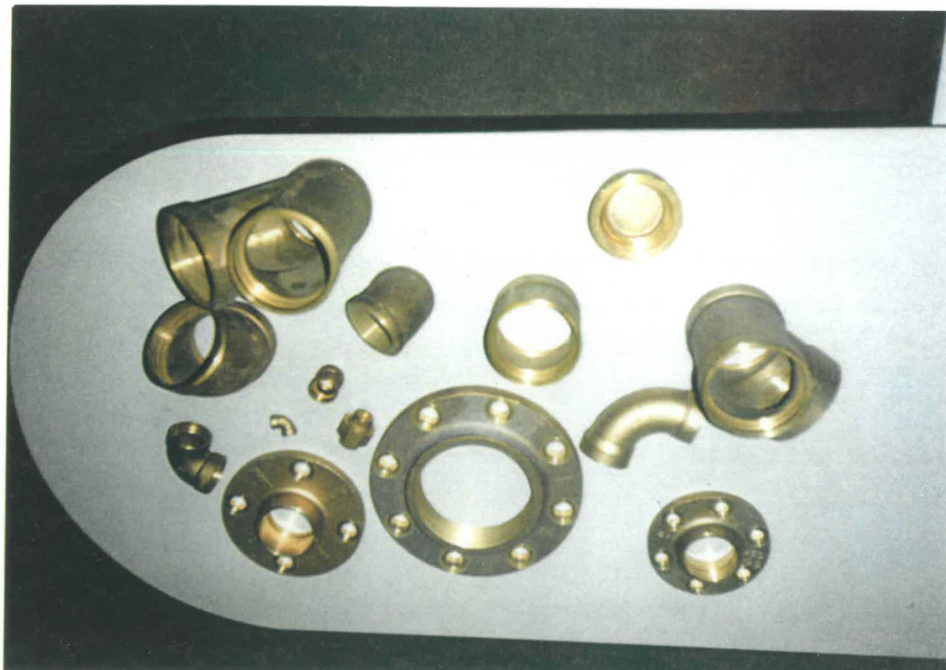
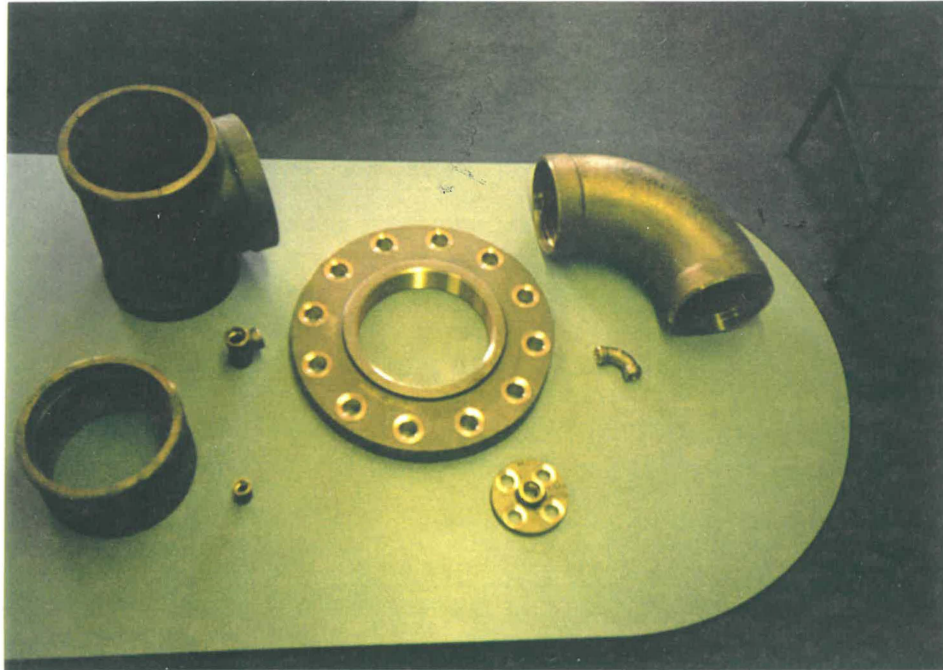


**AUTOMATIC MOLDING  
MACHINE**

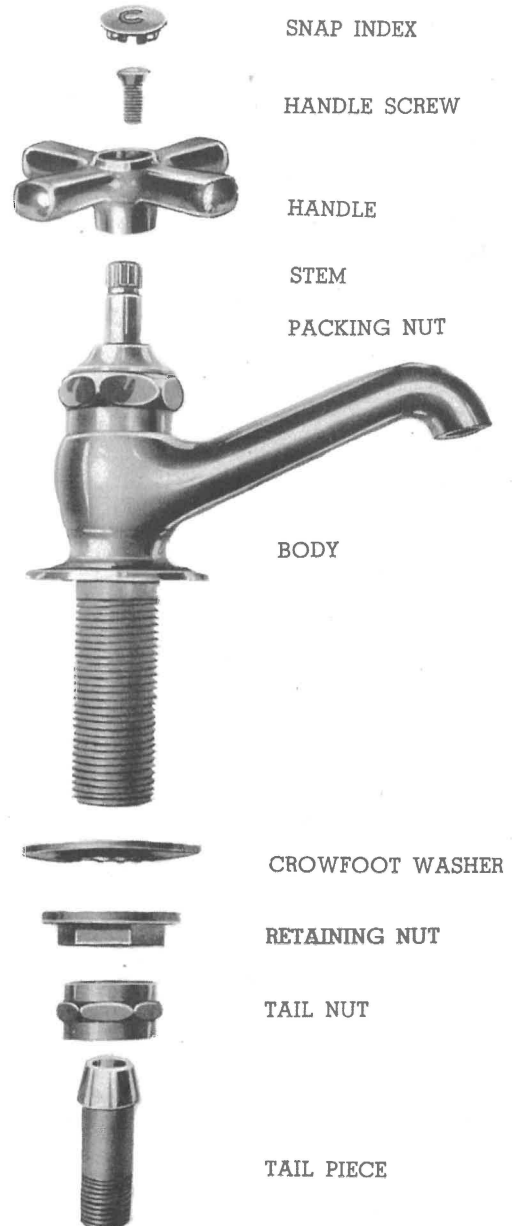
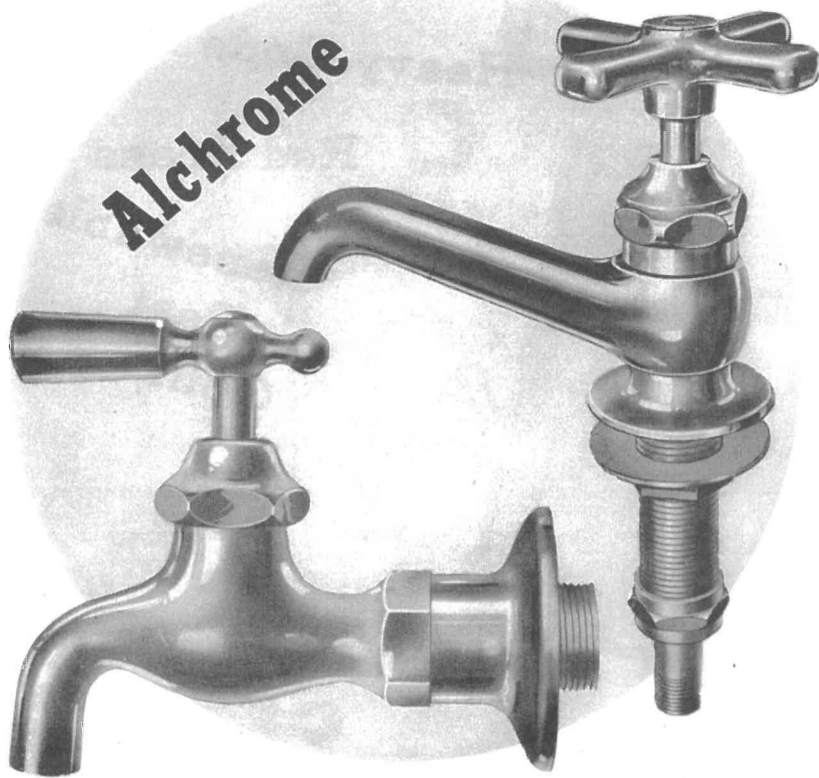


**ALCHROME PRODUCTS**

**BRONZE FLANGES AND PIPE FITTINGS**



# The Details Which Mean Quality and Dependability in Faucets and Bibbs



## Details

1. Wall Thickness: HEAVY Code Pattern.
2. Material: High Quality RED Brass.
3. Seat: Renewable. Optional.
4. Handles: As You Desire: 4-Arm or Lever.
5. Index: Snap, With Interchangeable Indication.
6. Rigidity: Crowfoot Washer and Retaining Nut.
7. Tailpiece and Tail Nut: Heavy BRASS, Will Not Twist Off.
8. Clean, Sleek Lines - Beautiful Chrome Finish.
9. Less Trouble - Longer Life - Code Pattern.
10. Protective Nickel Plate Under Chrome Finish.
11. Full Depth Stem Seat Prevents Seat Washer Spread.
12. Brass Washer Under Top Fibre For Extra Support.
13. Heavy FORGED Brass Bibb Flange.
14. Brings Quality to Every Installation.

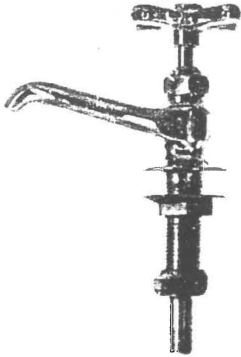
PACKED 3 PAIRS PER BOX - 18 PAIRS PER CASE.

**Alchrome Products Company, Newcomerstown, Ohio**

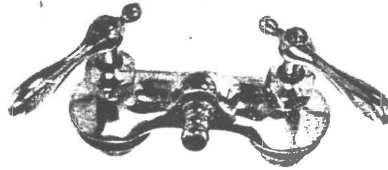
---

## LAVATORY SINK AND BATH FAUCET

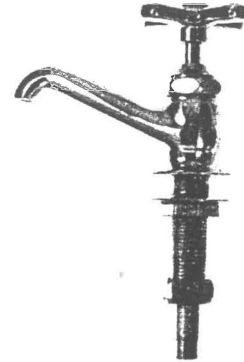
---



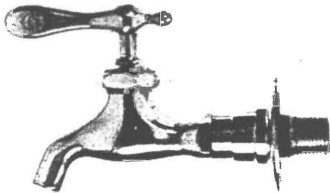
**NO. 90** ALCHROME  
"ECONOMY" CODE SPOUT  
LAVATORY FAUCET



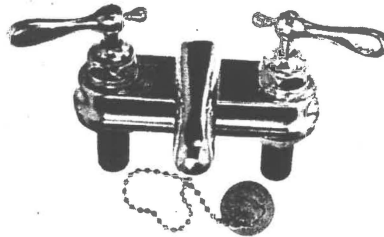
**NO. 0** ALCHROME  
BATHCOCK



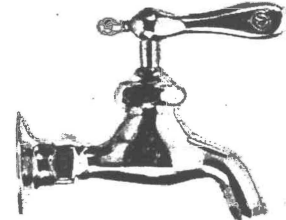
**NO. 91** ALCHROME  
"HEAVIER" CODE SPOUT  
LAVATORY FAUCET



**NO. 82** ALCHROME  
1/2" ADJUSTABLE FLANGE  
MALE BIBB



**NO. 55** ALCHROME  
4" CENTERSET  
LAVATORY FAUCET

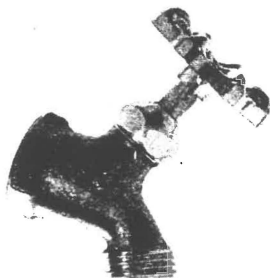


**NO. 73** ALCHROME  
1/2" FEMALE FLANGE BIBB

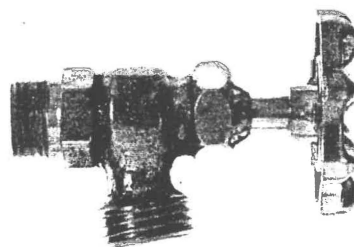
---

## DRAIN VALVES

---

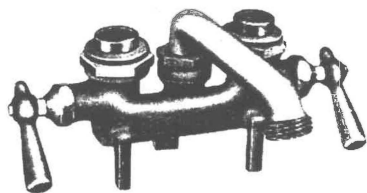


**NO. 8** ALCHROME  
3/4" FEMALE DRAINCOCK



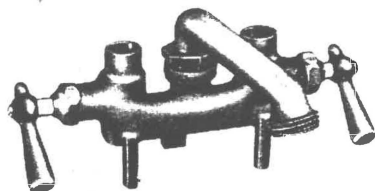
**NO. 4** ALCHROME  
1/2" MALE BOILERDRAIN

**VICTOR BRASS DIVISION - - 12 Wood St., Uniontown, Pa.**

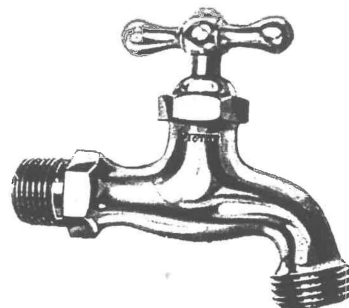


**NO. 140 VICTOR**  
 1/2" LAUNDRY TRAY FAUCET  
 C. C. — WITH UNIONS

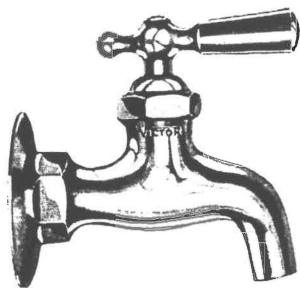
**NO. 145—SAME EXCEPT**  
 I.P.S.—WITH UNIONS



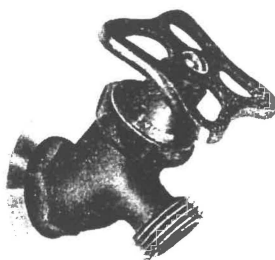
**NO. 150 VICTOR**  
 1/2" LAUNDRY TRAY FAUCET  
 COPPER—NO UNIONS



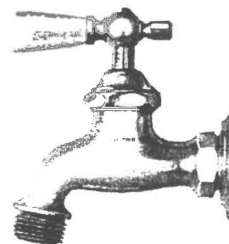
**NO. 65 VICTOR**  
 1/2" MALE SINK BIBBS—PLAIN—T HDLS.  
**NO. 66—SAME EXCEPT HOSE END**



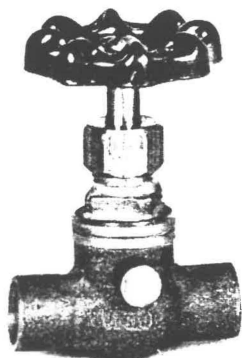
**NO. 75 VICTOR**  
 1/2" FEMALE SINK BIBBS  
 PLAIN T. HDLES, OR LEVER HDLE.



**NO. 6 VICTOR**  
 1/2" SILLCOCKS — WHEEL HDL.  
**NO. 7—3/4" SILLCOCKS — WHEEL HDL.**

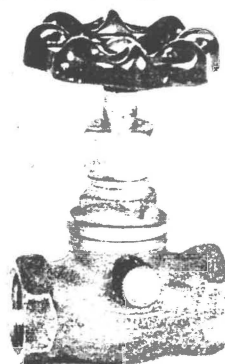


**NO. 76 VICTOR**  
 1/2" FEMALE SINK BIBBS  
 HOSE — T. HDLES, OR LEVER HDLES.



**VICTOR MIDGET**

- NO. 14—1/2" C-C STOPS —WHEEL HDL.**
- NO. 15—3/4" C-C STOPS — WHEEL HDL.**
- NO. 21—1/2" C-C STOP & WASTES — WHEEL HDL.**
- NO. 22—3/4" C-C STOP & WASTES — WHEEL HDL.**



**VICTOR MIDGET**

- NO. 41—3/8" I.P. STOPS — WHEEL HDL.**
- NO. 42—1/2" I.P. STOPS — WHEEL HDL.**
- NO. 43—3/4" I.P. STOPS — WHEEL HDL.**
- NO. 32—3/8" I.P. STOP & WASTES — WHEEL HDL.**
- NO. 33—1/2" I.P. STOP & WASTES — WHEEL HDL.**
- NO. 34—3/4" I.P. STOP & WASTES — WHEEL HDL.**

## HICKORY FLATS GREENS GOLF COURSE

HERB AND SKIP SMITH, BOTH AVID GOLFERS, WITH A GREAT LOVE FOR THE GAME PURCHASED HICKORY FLATS GOLF COURSE NEAR WEST LAFAYETTE IN 1984, AND CONTINUED ITS OPERATION AS A PUBLIC GOLFING FACILITY WHERE A MULTITUDE OF IMPROVEMENTS WERE MADE INCLUDING AN INCREASED FLEET OF GOLF CARTS, NEW STORAGE FACILITIES, CART PATHS, AND TWO LARGE IRRIGATION WELLS AND LAKES.



## HICKORY FLAT GREENS ORIGINAL CLUB HOUSE



## LAYOUT OF HICKORY FLAT GREENS GOLF COURSE

*Hickory Flat Greens Golf Course  
West Lafayette, Ohio  
One Mile South of W. Lafayette on Rt. 93  
Pro Shop (614) 545-7796*

**U.S.G.A. Rules Govern All Play**

1. All players must register at the Pro Shop.
2. A foursome is the only recognized Match and has the Right-of-Way over any other Match.
3. Please keep carts 30 feet away from tees and greens.
4. Please repair ball marks on greens and replace divots.
5. **PROPER GOLF ATTIRE MUST BE WORN AT ALL TIMES.**

SLOPE: RED	105	RATING: RED	68.3
WHITE	106	WHITE	69.1
BLUE	109	BLUE	70.4

**ALL YARDAGES ARE TO THE MIDDLE OF THE GREENS.**



## HICKORY FLAT GREENS HOLES

#1 393 YARDS (WATER IN FRONT) PAR 4



#3 376 YARDS (STREAM DITCH IN FRONT) PAR 4



## HICKORY FLAT GREENS HOLES

#4 PAR 3 171 YARDS



#6 PAR 4 340 YARDS





## MIONA LAKE GOLF CLUB

· WILDWOOD FLORIDA

SKIP SMITH SAW AN OPPORTUNITY TO INCREASE OWNERSHIP IN GOLF COURSES AND PURCHASED THE MIONA LAKE GOLF COURSE IN WILDWOOD FLORIDA IN 1993.

THE MIONA GOLF CLUB OPERATES AS A SEMI-PRIVATE GOLF CLUB WITH 18 BEAUTIFUL HOLES. SKIP'S SON R. CLARK SMITH, WHO JOINED THE COMPANY IN 1992, AND HIS WIFE, LESLIE ARE ACTIVE MANAGERS AND LIVE ADJACENT TO THE GOLF COURSE.

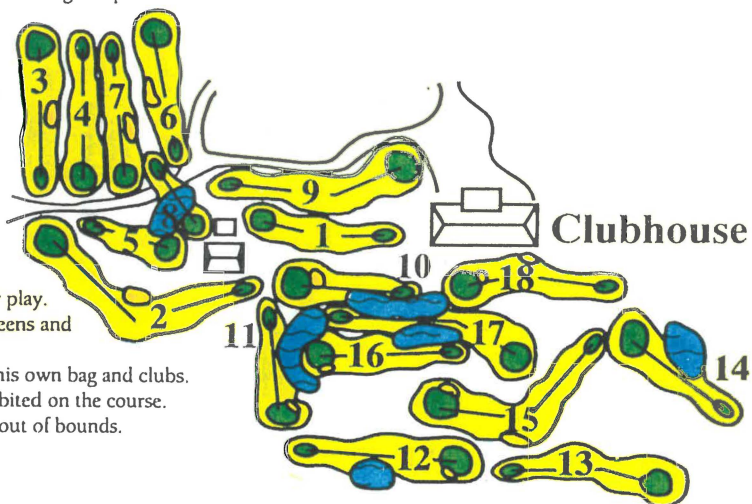


# MIONA LAKE GOLF CLUB

## LAYOUT

### Golf Course Rules

- All players register in Pro Shop before playing.
- Proper Golf attire required. (Collared shirts, no tank tops).
- Play begins from No. 1 tee, unless otherwise specified by Pro Shop.
- No more than two riders or golf bags per cart.
- Foursomes will be given priority over other groups playing the course.
- Fivesomes prohibited - unless given permission.
- Golfers breaking play between nines lose their position and may resume play only when No. 10 is open.
- Slower players must allow faster players to play through.
- Pets not allowed on golf course, whether on leash or not.
- Rake all sand traps after play.
- Repair ball marks on greens and replace divots.
- Each player must have his own bag and clubs.
- Use of range balls prohibited on the course.
- All paved roadways are out of bounds.



### HOLE #1 384 YARDS PAR 4



MIONA LAKE GOLF CLUB

HOLE #5 PAR 3 146 YARDS



HOLE # 13 524 YARDS PAR 5



**MIONA LAKE GOLF CLUB POOL**



**MIONA LAKE RESTAURANT**




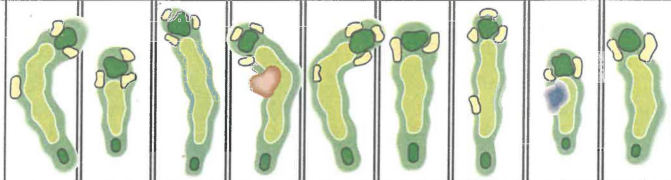
## A THIRD GOLF COURSE



IN NOVEMBER 1996, "SKIP" SMITH SEEKING TO EXPAND HIS GOLF BUSINESS PURCHASED THE LAKESIDE COUNTRY CLUB - 4555 EAST WINDMILL DRIVE, INVERNESS, FLORIDA 34433.

LAKESIDE IS SITUATED IN 180 ACRES AND SURROUNDED BY A LARGE HOUSING DEVELOPMENT. IT IS AN 18 HOLE LAYOUT (6475 YARDS LONG) AND WAS OPENED IN 1979. THE GOLF COURSE HAS BEEN CONVERTED TO A PUBLIC COURSE, AND IS MANAGED BY CLARK SMITH AND HIS WIFE, LESLIE.



# LAKESIDE COURSE LAYOUT

										Ch
	<b>Holes</b>	<b>1</b>	<b>2</b>	<b>3</b>	<b>4</b>	<b>5</b>	<b>6</b>	<b>7</b>	<b>8</b>	<b>9</b>
<b>Blue Tees</b>	358	146	612	369	357	344	586	191	316	3279
<b>White Tees</b>	344	138	594	360	342	338	569	156	304	3145
<b>Par</b>	4	3	5	4	4	4	5	3	4	36
<b>Handicap</b>	11	17	3	1	7	13	5	9	15	
<b>+/-</b>										
<b>Handicap</b>	7	17	1	5	13	9	3	15	11	
<b>Par</b>	4	3	5	4	4	4	5	3	4	36
<b>Red Tees</b>	331	129	481	350	278	322	499	147	295	2832

												
<b>10</b>	<b>11</b>	<b>12</b>	<b>13</b>	<b>14</b>	<b>15</b>	<b>16</b>	<b>17</b>	<b>18</b>	<b>In</b>	<b>Tot</b>	<b>Hcp</b>	<b>Net</b>
321	379	496	173	288	197	525	469	348	3196	6475		
304	348	481	159	279	193	512	400	330	3006	6151		
4	4	5	3	4	3	5	4	4	36	72		
18	6	10	12	16	8	4	2	14				
<b>10</b>	<b>6</b>	<b>2</b>	<b>16</b>	<b>12</b>	<b>18</b>	<b>14</b>	<b>8</b>	<b>4</b>				
4	4	5	3	4	3	4	5	4	36	72		
282	338	439	146	257	131	301	390	323	2607	5439		

# LAKESIDE CLUB HOUSE - RESTAURANT AND BAR



**CLARK AND LESLIE SMITH - BONNIE HELLER**

# Alchrome Products Co. Here Observing 30th Anniversary

In this bicentennial year Alchrome Products Company is celebrating its 30th year in business. The firm was incorporated in 1946. Sales this year have exceeded any in the past. They have new patterns on order and diversification from plumbers' faucets into brass and bronze specialties is continuing. The company employs 24 at

the present. Its number of employees ranges from 20 to 38. President of the company is F. Herbert Smith.

Following World War II, after serving four and a half years as an officer in the coast artillery, Smith with his wife, Dorris, and son Clark moved back to Newcomerstown.

Alchrome Products was incorporated in March of 1946. A small building was constructed on Elizabeth St., and in October production was started. They were manufacturing plumbers brass faucets. At the time the castings were purchased from foundries in Cleveland and Orrville.

In 1948, a foundry was added and the entire faucet, except for handles and special fittings was made in the Newcomerstown plant.

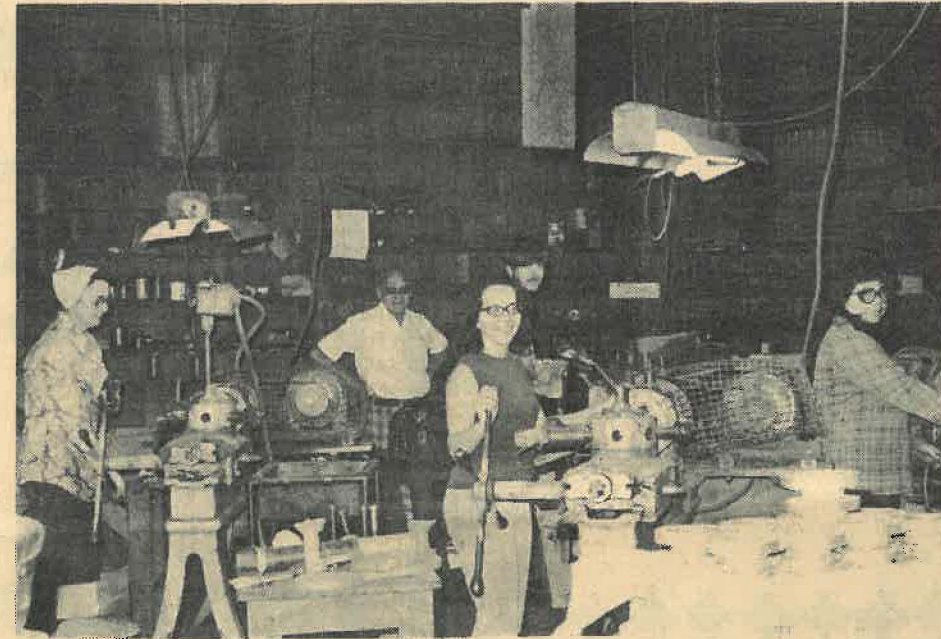
Several years later, the patterns, tools, and machines of Victor Brass of Cleveland were purchased and moved to Newcomerstown. This greatly broadened the Alchrome line of plumbers brass faucets and fittings.

Recently Alchrome further enlarged its line by the addition of many pipe fittings used in the ship-building industry. They also make Navy fixtures for the government.

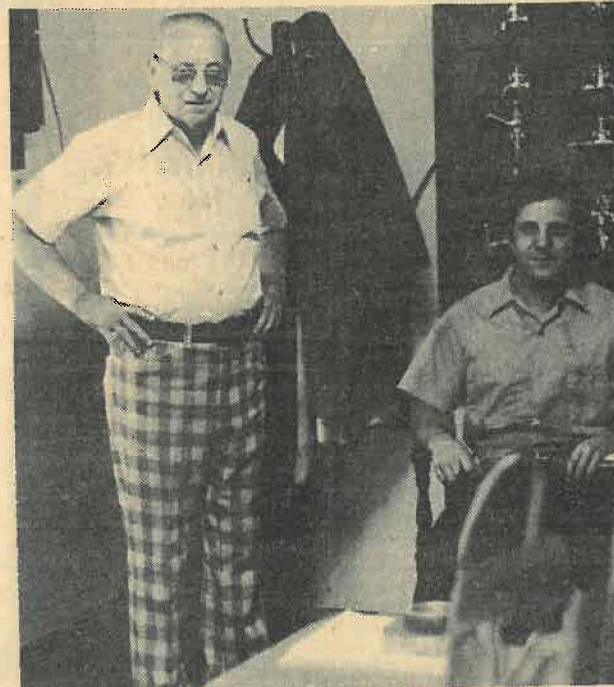
This year the building was enlarged by the addition of 2,100 square feet for assembly operations, increasing the company's size to 14,000 square feet.

Three years ago Smith's son, Clark, left DuPont and joined the firm as vice-president. He is a graduate of the University of Mississippi's School of chemical engineering.

Alchrome supplies wholesale plumber supply houses and the U.S. government. It made about 400,000 fixtures and fittings last year.

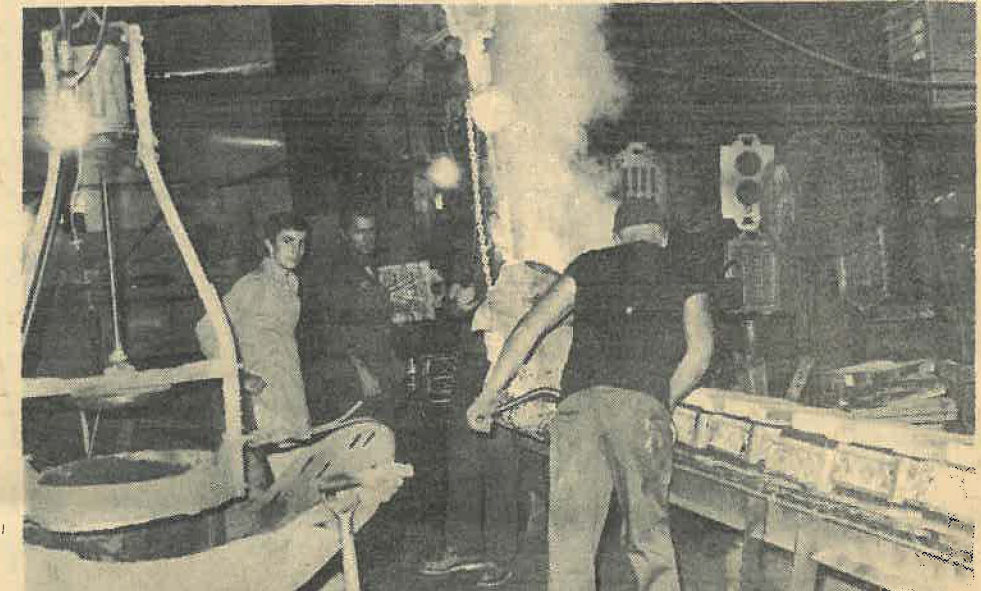


MACHINE ROOM — Edna Nay, Randy Barker, Antoinette Bell and Joyce Bradshaw are running turret lathes. There are making faucets.

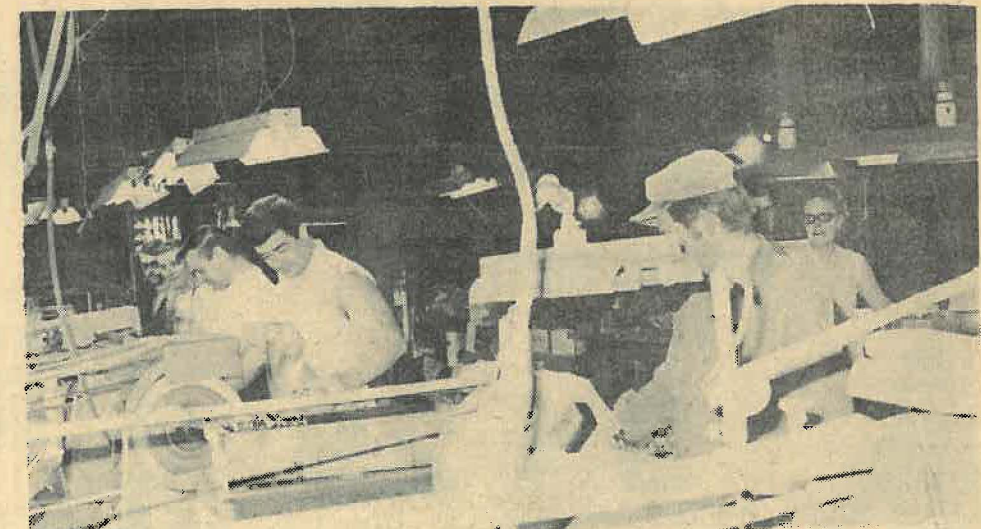


PRESIDENT — Herb Smith is pictured with his son, Clark, in the office. Clark came to the firm three years ago as vice-president.

## BUSINESS INDEX



FOUNDRY — Jerry Wylie and Mike Harbold are shown pouring hot metal for casting faucets while Frank Moore and Ken Madison are molding. Ray Flanigan is shaking out molds.



FINISHING ROOM — Dale Everthart, Terry Garbrandt, and Bob Glazer are shown polishing faucets. Burring the faucets are Gene Bradshaw and Jim Tony. Helen Shaw and Opal Lacey assemble the faucets.